

# U.S. PUBLIC LAND SURVEY MONUMENT RECORD

REGISTER OF DEEDS OFFICE  
ONEIDA COUNTY  
FILED

NOV 23 2018

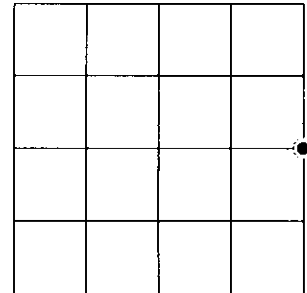
Note: This form is intended and designed to fulfill all requirements of the Wisconsin Administrative Code, Chapter A-E 7.08 U.S. Public Land Monument Record (3)(a)(b)(c)(d)(e)(f)(g)(h)(i). An additional sheet may be added if necessary to conform with said requirements.

(a) CORNER LOCATION: COORDINATES  
 East Quarter Corner of Section 19 North: 212638.064  
 Township 38 North East: 139463.716  
 Range 5 East Projection: WISCORS - Oneida  
 Town of Minocqua Datum: NAD 1983(2011)  
 County of Oneida Method: RTK - Direct

AT \_\_\_\_\_ O'CLOCK \_\_\_\_\_ M  
 RYLE J. FRANSON  
 REGISTER OF DEEDS

(RECORDING AREA)

SECTION 19



(b) HISTORY OF ORIGINAL CORNER ESTABLISHMENT

Original Surveyor: Alexander Anderson  
 Date of Survey: Commenced October 6, 1863  
 Completed October 13, 1863  
 Original B.T.'S: 10" Tamarack, N 66°W, 10 lks.  
 7" Tamarack, N 10°E, 50 lks.

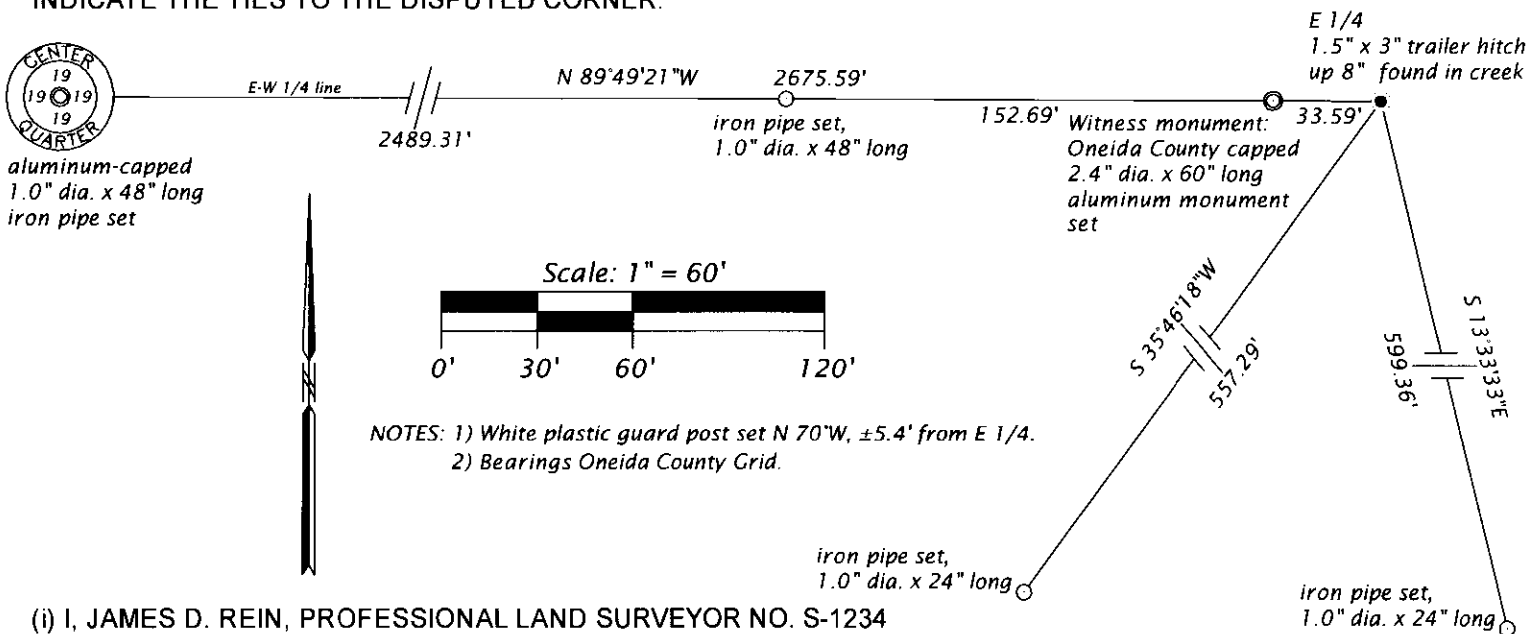
(f)(g)(h) DESCRIPTION OF MONUMENT FOUND AT THIS CORNER AND IF IT WAS ACCEPTED, STATE ALL EVIDENCE (MATERIAL, TESTIMONIAL, OCCUPATIONAL, PLATS, RECORDS, OTHER MONUMENTS) USED AS A BASIS FOR ESTABLISHING LOCATION. IF NOT ACCEPTED OR IF NOTHING WAS FOUND, STATE EVIDENCE USED AS BASIS FOR ESTABLISHING LOCATION. IF REESTABLISHED THROUGH LOST CORNER PROPORTIONATE METHODS, INDICATE ALL MONUMENTS, DISTANCES AND DIRECTIONS USED TO ESTABLISH. INDICATE TYPE OF MONUMENT AND SIGN POST FOUND OR SET.

1934 - January 4, and August 21 - Hall: Book 1, page 187; Found Orig. 1/4s, old hollow post and evidence of both original bt's. Marked new Tam. stub, 14" S82°W, 19.9'; drive new pine post alongside old one, drive steel bar 5 1/2" x 1" x 4" alongside both.

1938 - April 20 - Maine: Book 2, page 64; Found Orig. Gov't. stk.; Orig. bt's Tam. 10" N66°W, 10 lks. (down) marks plain) Tam. 7" N 10°E, .50 lks. (stub 5' high, plain) Old stk. and iron bar. Ray Hall's bt. Tam 12", S78°W, .30 ch. (stub).

2016 - Sept. 26 - James D. Rein, PLS, No. 1234 - Recovered 1.5" x 3" steel bar (old trailer hitch) in creek, 4 feet from west edge, a 1.5" dia. iron pipe, old scribed wood post and rotted post were found driven alongside of hitch. I do not replace the existing monument because it is in the creek, placed by Ray Hall, more than 80 years, and fairly stable. We establish a witness corner and reference ties as shown below in plan view.

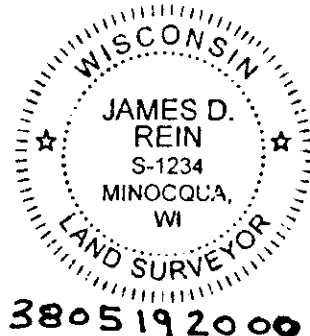
(c)(d)(e) PLAN VIEW OF CORNER WITH TIES TO AT LEAST 4 WITNESS MONUMENTS. IF IN DISAGREEMENT WITH PREVIOUSLY ESTABLISHED CORNER, SHOW THE DISTANCE BETWEEN THE TWO CORNERS AND ALSO INDICATE THE TIES TO THE DISPUTED CORNER.



(i) I, JAMES D. REIN, PROFESSIONAL LAND SURVEYOR NO. S-1234 HEREBY CERTIFY THAT THE CORNER LOCATION ON THIS RECORD WAS DETERMINED BY ME OR UNDER MY DIRECTION AND CONTROL AND THAT THIS U.S. PUBLIC LAND SURVEY MONUMENT RECORD IS CORRECT AND COMPLETE TO THE BEST OF MY KNOWLEDGE AND BELIEF.

*[Handwritten Signature]*  
 SIGNATURE

11-16-16  
 DATE



3805192000

INDEX NO. P-5