

**U.S. PUBLIC LAND SURVEY MONUMENT LOCATION RECORD**

Recorders Data

CORNER: North 1/4 SECTION: 27 TOWNSHIP 38 NORTH RANGE 5 EASTWEST

FOR M.C. CORNER INDICATE: NAME OF WATERWAY N/A SECTION LINE N/A

(CITY)(VILLAGE)(TOWN) OF: Minocqua COUNTY OF: Oneida

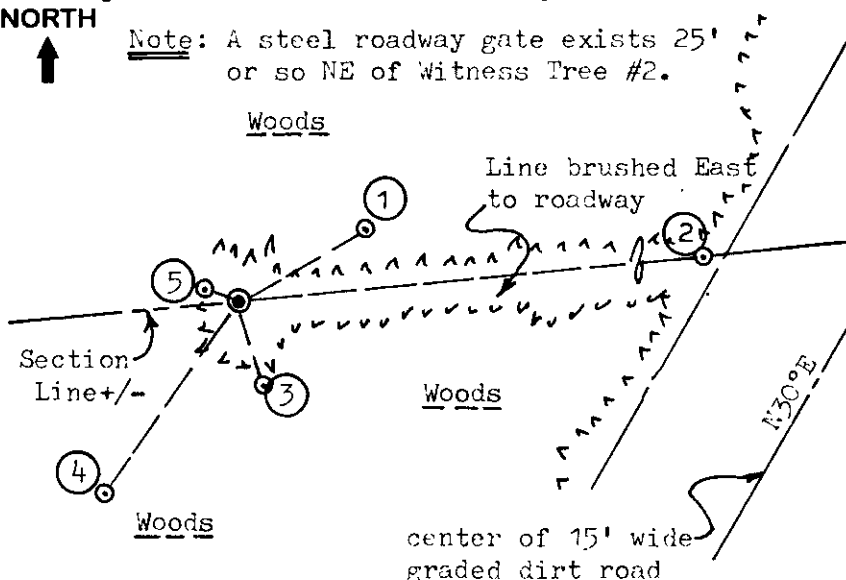
Description of monument found or placed and all other evidence used as a basis for monument location; including all monuments and related measurements required if the corner location is reestablished by lost corner proportionate methods. Also indicate name of original surveyor, survey date, corner monument set and established bearing trees, witness or reference monuments with ties from available records.

Found and accepted an old 1" dia. iron pipe monument with uncapped top 15" above grade at this corner location; also found an old 4" square wood corner marker post nearby with a standard Owens-Illinois aluminum location tag on upper face and "1/4 S" scribed on adjacent upper face. I plumbed the iron pipe found and drove a standard 2" dia. by 30" split bottom end aluminum pipe monument with stamped Oneida County aluminum cap 1" above grade over the older iron pipe to further identify and perpetuate the corner location. I left the old wood marker post flat on grade next to new monument set. In 1865, Anderson/GLO set a wood post as the corner and marked OBTs, a 24" Pw S70°E 20 lks and a 12" Hemlock N25°W 13 lks; the corner post and NW OBT Hemlock are both now gone, however a large decayed pine trunk and nearly obliterated root crown lies SE of the corner location very nearby at the position of the SE OBT. In 1957, Becker/now Owens-Illinois noted a monument at this corner "By Others" per 1987 map of record by W. Stuth. A typed listing of corner recovery information, dated January 15, 1979, in Oneida County survey records, notes a WCD brass capped monument found at this corner and BTs, an 8" Bw S76°W 31.6' and an 8" Bw S24°E 38.1', all of which I did not find any indication of by careful field search in the nearby area; therefore, I am of the opinion that such information was entered on the listing in error. As noted by County Surveyor Romportl on Page 1 of the six page listing, the source of the information therein was then and is presently unknown. This recovery completed May 21, 1998; there were no witnesses. Evidence of a "blue-painted" forestry line also found East of the corner.

Plan view map of monument location with bearing and distance ties to a minimum of four(4) described witness or reference monuments of concrete, natural stone, iron, live bearing trees or equivalent material. If applicable, also show a minimum of two(2) bearing and distance ties to any other monument found and not accepted; including the bearing and distance from the accepted monument. Indicate the basis for bearings of reference ties if not referenced to magnetic north.

NORTH

Note: A steel roadway gate exists 25' or so NE of Witness Tree #2.



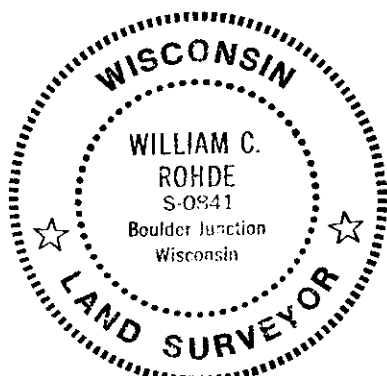
WITNESS MONUMENT TIES:

- ① New BT 4 1/2" Balsam/Spruce N60°E 7.46'.
- ② New BT 10" Pr N86°E 58.73' with Standard BT sign nailed to East face.
- ③ New BT 4" Balsam/Spruce S15°E at 4.69'.
- ④ New BT 5 1/2" Balsam/Spruce S36°W at 12.15'.
- ⑤ New BT 4" Balsam/Spruce N67°W at 1.95'.

Note: Standard white poly 'T' corner marker post set 7" West.

SCALE: 1" = 10'

Unless otherwise indicated, all bearing tree ties are to a .25" dia. by 2.5" long PK nail with a 1.25" dia. steel washer driven into unblazed right face and a .25" dia. by 2.5" long PK nail with a 2" dia. steel washer stamped 'BT' is also driven into unblazed face of bearing tree at DBH; the basis for measured bearings is magnetic to nearest degree and all tie distances are horizontal measure to nearest 1/100th feet.



RLS SEAL

SHEET NO. 1 OF 1

LAND SURVEYOR CERTIFICATION:

I, William C. Rohde, hereby certify that I am a duly licensed Professional Land Surveyor in Wisconsin, that this USPLS monument location was determined by me or under my direction and control, and that this U.S. Public Land Survey Monument Location Record is true and correct to the best of my knowledge and belief.

William C. Rohde Date: 5-23-98  
Signature

This form is intended to fulfill requirements of Chapter A-E 7.08 (3)(a)(b)(c)(d)(e)(f)(g)(h)(i) U.S. Public Land Survey Monument Location Record, Wisconsin Administrative Code. Use reverse side for geodetic location data and/or continuation purposes.

	27		

SECTION LOCATION MAP

INDEX NO. R 15  
38 05 22 00 20

INDEX NO. R 15