

U.S. PUBLIC LAND SURVEY MONUMENT RECORD

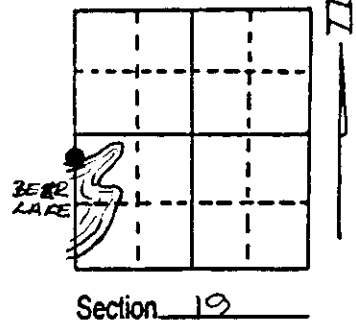
Note: This form is intended and designed to fulfill all requirements of Wisconsin Administrative Code, Chapter A-E 7.08 U.S. Public Land Survey Monument Record (3) (a) (b) (c) (d) (e) (f) (g) (h) (i). An additional sheet may be added if necessary to conform with said requirements.

(a) Corner location: Township 38 North

Range 6 East ~~10~~

Town/City/Village HAZELHURST

County ONEIDA



Section 19

(b) (f) (g) (h) Description of monument found at this corner and if it was accepted, state all evidence (material, testimonial, occupational, plats, records, other monuments) used as a basis for accepting. If not accepted or if nothing was found, state evidence used as basis for establishing location. If reestablished through lost corner proportionate methods, indicate all monuments, distances and directions used to establish. Indicate type of monument found or set and sign post.

Sept. 28th, 1863 - Alexander Anderson, Deputy Surveyor, set Meander Post witnessed by two bearing trees: a 7" W. Pine bearing N31°E, 34 links; and a 12" Y. Pine bearing N34°W, 3 links.

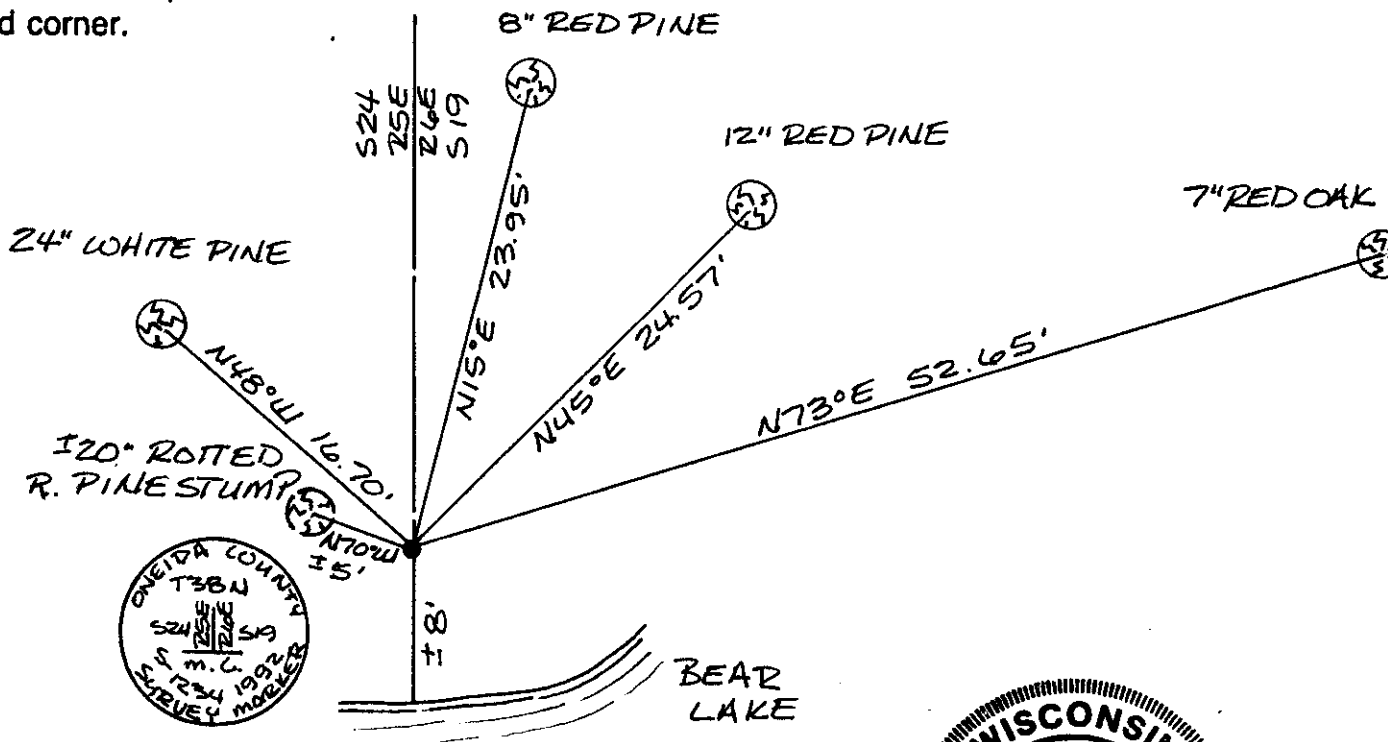
Dec. 10th, 1947 - E. F. Kowalke, Surveyor, recovered old post and downed original B.T., set iron pipe at post and marked a 24" W. Pine bearing Northwest, 16.2 feet.

Dec. 12th, 1977 - James F. Kasson, Reg. Land Surveyor, recovered a 1 1/2" dia. iron pipe witnessed by a 24" W. Pine bearing N44°W, 16.1 feet.

April 3rd, 1978 - Jerome N. Kraemer - Reg. Land Surveyor, recovered a 1" dia. iron pipe up 1 1/2 feet and old rotted post broken off, witnessed by a 21" W. Pine bearing N47°W, 16.02 feet.

Oct. 12th, 1992 - James D. Rein, Reg. Land Surveyor, recovered a 1" dia. iron pipe up 1 1/2 witnessed by 24" W. Pine bearing N48°W, 16.7 feet. Replaced 1" iron pipe with a capped 2" dia. x 30" long aluminum monument. Set a plastic post 1 1/4 feet Northeast of corner. Made new reference ties as shown in plan view.

(c) (d) (e) Plan view of corner with ties to at least 4 witness monuments. If in disagreement with previously established corner, show the distances between the two corners and also indicate the ties to the disputed corner.



(i) I, James D. Rein, Registered Land Surveyor No. 1234
(type or print name) certify that the corner location on this record was determined by me or under my direction and control and that this U.S. Public Land Survey Monument Record is correct and complete to the best of my knowledge and belief.



Signature

Date

10-12-92

3806 3805241600
Stamp

Index No. P. 0-1