

U.S. PUBLIC LAND SURVEY MONUMENT RECORD

REGISTER OF DEEDS OFFICE
ONEIDA COUNTY
FILED

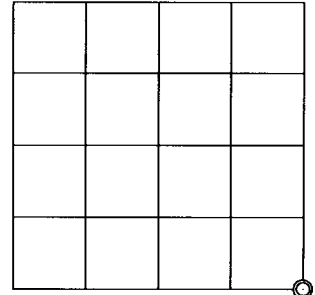
JUN 01 2017

Note: This form is intended and designed to fulfill all requirements of the Wisconsin Administrative Code, Chapter A-E 7.08 U.S. Public Land Monument Record (3)(a)(b)(c)(d)(e)(f)(g)(h)(i). An additional sheet may be added if necessary to conform with said requirements.

(a) CORNER LOCATION: WISCRS - Oneida County
 Southeast Corner of Section 25 North: 204502.125 USft
 Township 38 North East: 165783.569 USft
 Range 5 East Latitude: 45° 44' 47.86746" N
 Town of Minocqua Longitude: 89° 47' 45.45264" W
 County of Oneida Datum: NAD 83(2011)
 GNSS Method: RTK - Direct
 GNSS Control: WISCORS VRS
 Record North: 204502.252 USft
 Record East: 165783.476 USft
 Record Datum: NAD 83(1991)

AT _____ O'CLOCK _____ M
 KYLE J. FRANSON
 REGISTER OF DEEDS

(RECORDING AREA)
 SECTION 25



(b) HISTORY OF ORIGINAL CORNER ESTABLISHMENT

Original Surveyor: Alfred Millard
 Date of Survey: Commenced September, 1860
 Completed September, 1860
 Original B.T.'S: W. Pine 6" S 70°W, 14 lks. Aspen 10" S 50°E, 4 lks.
 W. Pine 8" N 05°W 24 lks. Aspen 10" N 45°E 21 lks.

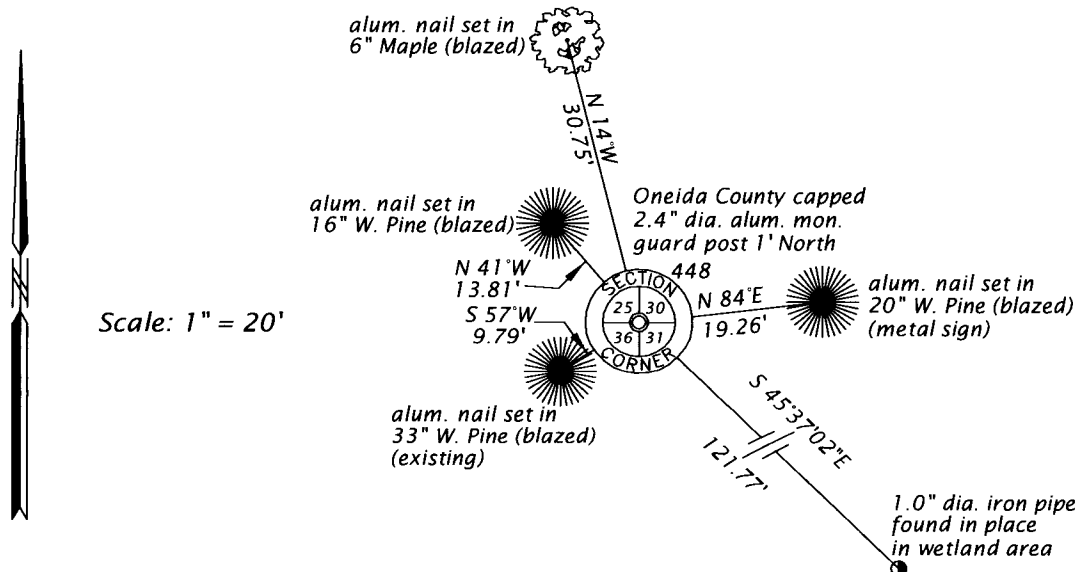
(f)(g)(h) DESCRIPTION OF MONUMENT FOUND AT THIS CORNER AND IF IT WAS ACCEPTED, STATE ALL EVIDENCE (MATERIAL, TESTIMONIAL, OCCUPATIONAL, PLATS, RECORD, OTHER MONUMENTS) USED AS A BASIS FOR ESTABLISHING LOCATION. IF NOT ACCEPTED OR IF NOTHING WAS FOUND, STATE EVIDENCE USED AS BASIS FOR ESTABLISHING LOCATION. IF REESTABLISHED THROUGH LOST CORNER PROPORTIONATE METHODS, INDICATE ALL MONUMENTS, DISTANCES AND DIRECTIONS USED TO ESTABLISH. INDICATE TYPE OF MONUMENT AND SIGN POST FOUND OR SET.

1964 - Nekoosa Edwards Paper Co. and Owens-Illinois, map of lines established in Sec. 29 - 31 & 32, T38N, R6E, filed as B1318 in county surveyor's office, legends this corner an "Old Cor.", referenced by a W.P. 24" S29°E, 9.5 feet and by a W.P. 6" S55°W, 29.0 feet.

April 5, 2017 - James D. Rein, PLS No. 1234, we recovered a 1" dia. iron pipe flush with the ground surface, referenced by a blazed 33" dia. W. Pine bearing S57°W, 9.79 feet. The position of the found iron pipe is harmonious with the Nekoosa / Owens-Illinois survey, thus I accept it at the the best available evidence of the position of the original corner and we replaced it with an Oneida County capped 2.4" dia. x 30" long aluminum monument, and also made additional reference ties as shown in the plan.

The coordinate value shown has been verified by at least one of the following methods: 1) comparison to a previously GPS determined published value; 2) the value is the average of two or more GPS observations at a markedly different time; 3) one or more distances were measured back to the GPS observed corner from temporary GPS observed offset locations.

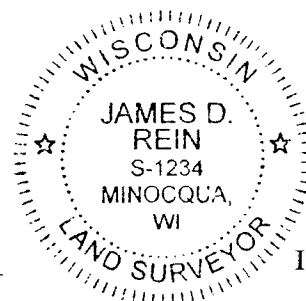
(c)(d)(e) PLAN VIEW OF CORNER WITH TIES TO AT LEAST 4 WITNESS MONUMENTS. IF IN DISAGREEMENT WITH PREVIOUSLY ESTABLISHED CORNER, SHOW THE DISTANCE BETWEEN THE TWO CORNERS AND ALSO INDICATE THE TIES TO THE DISPUTED CORNER.



(i) I, JAMES D. REIN, PROFESSIONAL LAND SURVEYOR NO. S-1234 HEREBY CERTIFY THAT THE CORNER LOCATION ON THIS RECORD WAS DETERMINED BY ME OR UNDER MY DIRECTION AND CONTROL AND THAT THIS U.S. PUBLIC LAND SURVEY MONUMENT RECORD IS CORRECT AND COMPLETE TO THE BEST OF MY KNOWLEDGE AND BELIEF.

[Handwritten Signature]
 SIGNATURE

5-24-17
 DATE



INDEX NO. V - 25
 3805250000