

This form is intended to fulfill the requirements of Chapter A-E7.08 (3)(a) thru (i) U.S. Public Land Survey Monument Location Record, Wisconsin Administrative Code. Use the reverse side of form for continuation.

U.S. PUBLIC LAND SURVEY MONUMENT LOCATION RECORD

USPLS CORNER: NORTH WITNESS MC SECTION: 30 TOWNSHIP: 38 NORTH RANGE: 6 EAST
 NAME OF WATERWAY FOR M.C. CORNER: WEST TWIN LAKE SECTION LINE: WEST
 (CITY/VILLAGE/TOWN) OF: HAZELHURST COUNTY OF: ONEIDA

Description of monument found or placed and all other evidence used as the basis for monument location; including monuments and measurements required if the corner location was reestablished by lost corner proportionate methods. Also indicate name of the original surveyor, original survey date and the corner monument, bearing trees, witness or other reference monuments established, including measured bearing and distance ties, from available survey records.

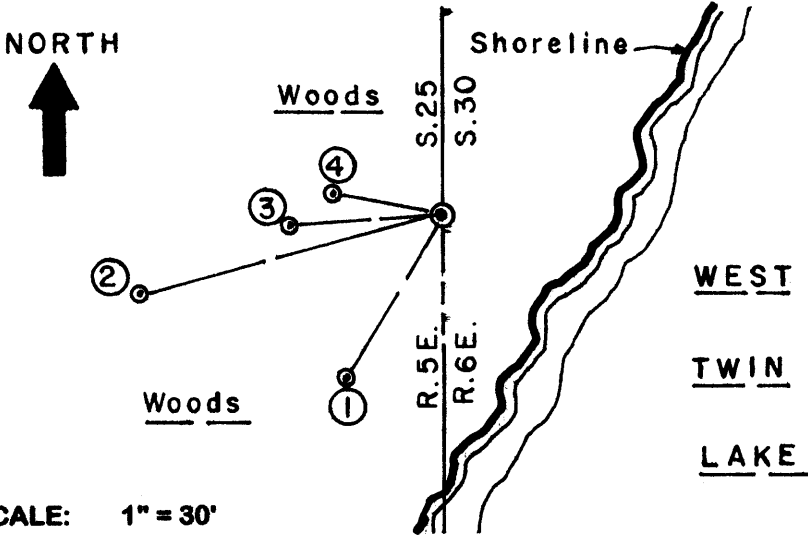
I could not find record iron pipe at this corner location per Plats of Survey by William Cameron/RLS 112 filed as C-211 and C-212 in Oneida County records and dated June 1968 and July 1970 respectively; I could not verify 26" Pine stump noted by Cameron S53°W 21.4'. I therefore set a new witness MC on the section line by traverse, as represented on reverse side of this location record, with a standard 2" dia. by 30" long aluminum pipe monument with stamped Oneida County cap to 12" above grade and due to subsurface rooting the monument top is tipped 1.5" South, so top cap center used for new ties. The section line is intervisible to the South Witness MC across West Twin Lake that I recovered previously on September 10, 2004 per filed location record.

I did however find an old 1" dia. iron pipe 46" up and very unstable in wetland lakeshore bank area nearby, which was rusted below the upper 24" of the pipe, thus indicating that it was more than likely pulled or disturbed from its probable location as the record MC per foregoing Plats of Survey; I pulled the 56" long iron pipe and left it flat in the crotch of a small dia. Bw found at the likely record MC location by my traverse. New MC falls about 27' West of irregular vegetated boggy lake shoreline bearing N50° E +/-.

In September 1860, Alfred Millard/GLO set a wood post as the original corner and noted OBTs: a 6" Bw N63°W 14 links and a 6" Bw N22.5°E 11 links; all now obliterated beyond recovery purposes.

This recovery completed September 10, 2004 and witnessed by adjoiner owner at Fire #5944 West Twin Lake Road.

Plan view map of monument location with bearing and distance ties to a minimum of four(4) described witness or reference monuments of concrete, natural stone, iron, live bearing trees or equivalent material. If applicable, also show a minimum of two(2) bearing and distance ties to any other monument found and not accepted; including the bearing and distance from the accepted monument.

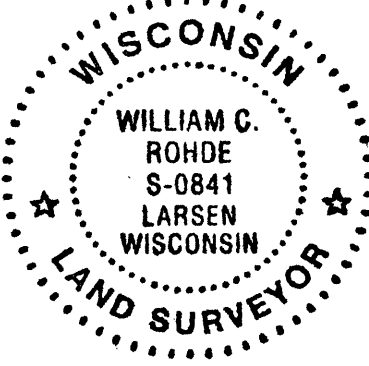


- WITNESS MONUMENT TIES:**
- ① New 11" Pw BT S30°W 29.85'.
 - ② New 11" Pw BT S75°W 49.10'.
 - ③ New 15" Pw BT S85°W 23.90'.
 - ④ New 12" Pw BT N80°W 17.39'.
- I set a standard white poly "T" marker post 6" East of new MC monument.
- I flagged old and new monuments and T post with blaze orange tape only.

SCALE: 1" = 30'

Unless otherwise indicated, all bearing tree ties are to a .25" dia. by 2.5" long PK nail with a 1.25" dia. steel washer driven into unblazed right face and a .25" dia. by 2.5" long PK nail with a 2" dia. steel washer stamped BT is also driven into unblazed face of bearing tree at DBH; the basis for measured bearings is by compass to nearest degree and all tie distances are measured horizontal by steel tape corrected to nearest 1/100th feet at standard temperature of 68° F.

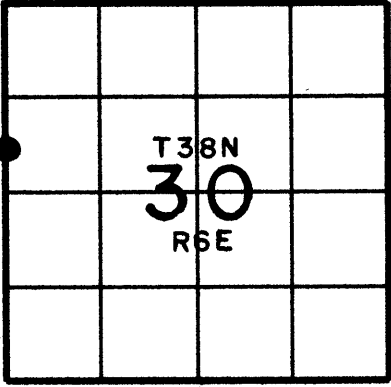
RLS SEAL:

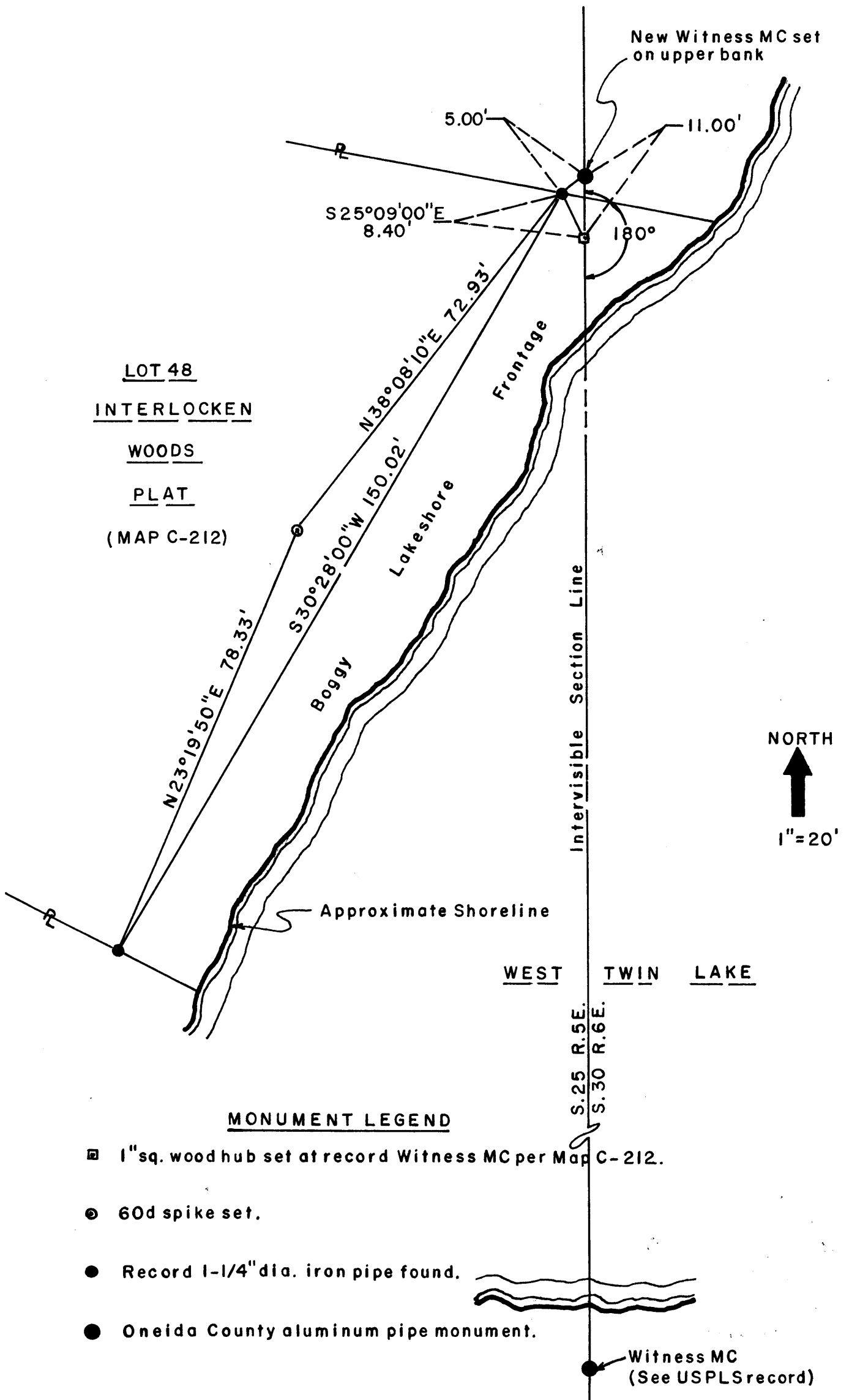


LAND SURVEYOR CERTIFICATE:

I, William C. Rohde, hereby certify that I am duly licensed as a Professional Land Surveyor in the State of Wisconsin; that this USPLS monument location was determined by me and/or under my direct supervision and control; and that this U.S. Public Land Survey Monument Location Record is true and correct to the best of my knowledge and belief.

Signed: *William C. Rohde*
 William C. Rohde RLS 841





MONUMENT LEGEND

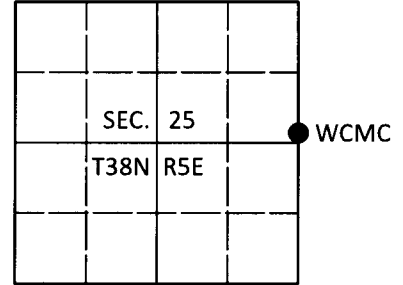
- ▣ 1"sq. wood hub set at record Witness MC per Map C-212.
- ⊙ 60d spike set.
- Record 1-1/4" dia. iron pipe found.
- Oneida County aluminum pipe monument.

U.S. PUBLIC LAND SURVEY MONUMENT RECORD

Note: This form is intended and designed to fulfill all requirements of Wisconsin Administrative Code, Chapter A-E 7.08 U.S. Public Land Survey Monument Record (3)(a-i).

(a) CORNER LOCATION
 Wit. Meander Cor. of Secs. 25 & 30
 Township 38 North
 Range 5 & 6 East of the 4th P.M.
 Town of Minocqua - Hazelhurst
 County of Oneida

WISCORS - Oneida County
 N: 207,690.77 USft
 E: 165,792.94 USft
 Datum: NAD 83(2011)
 GNSS Method: RTN - Offset
 GNSS Control: WISCORS VRS



(b) HISTORY OF ORIGINAL CORNER ESTABLISHMENT

Original Surveyor: _____ Original Accessories: _____

Date of Survey _____ Commenced: _____
 Completed: _____

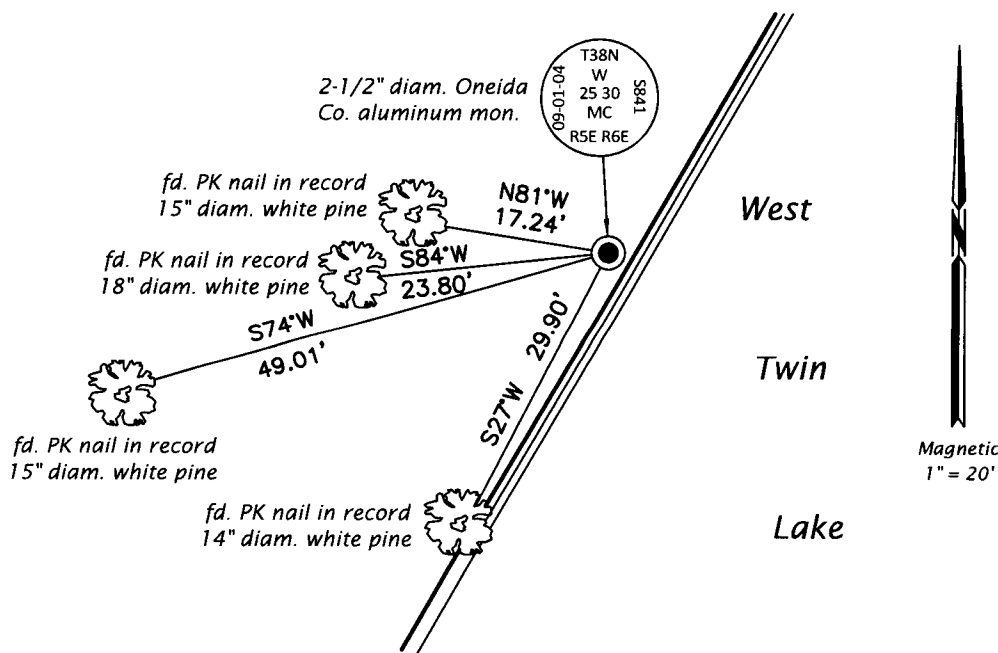
(b)(f)(g)(h) Description of monument found at this corner and if it was accepted, state all evidence (material, testimonial, occupational, plats, records, other monuments) used as a basis for accepting. If not accepted or if nothing was found, state evidence used as basis for establishing location. If re-established through lost corner proportionate methods, indicate all monuments, distances and directions used to establish. Indicate type of monument and sign post found or set.

This is a perpetuation of a previous USPLS Monument Record by William C. Rohde, RLS dated 31 Oct 2004 and filed in the office of the Oneida County Register of Deeds. A complete history of the corner can be found on the previous monument record. I accept the previous location as a true and faithful perpetuation or reestablishment of the original corner location and further perpetuate it as follows.

3 Nov 2017: I found and accepted the record monument, a 2-1/2" diam. aluminum pipe with a 3-1/4" diam. Oneida Co. aluminum cap projecting 10" above the ground surface. A 1-1/2" diam. iron pipe bears S52°W, 5.00 ft. I found accessories as shown below and found a white vinyl sign post bearing Southeast, 0.7 ft. dist.

The coordinate value shown has been verified by at least one of the following methods: 1) comparison to a previously GPS determined published value; 2) the value is the average of two or more GPS observations at a markedly different time; 3) one or more distances were measured back to the GPS observed corner from temporary GPS observed offset locations.

(c)(d)(e) Plan view of corner with ties to at least 4 witness monuments. If in disagreement with previously established corner, show the distances between the two corners and also indicate the ties to the disputed.



Magnetic
1" = 20'

REGISTER OF DEEDS OFFICE
 ONEIDA COUNTY
 FILED

JAN 02 2018

KYLE J. FRANSON
 REGISTER OF DEEDS

(i) I, Jeffrey W. Austin, Professional Land Surveyor No. S-1885, hereby certify that the corner location on this record was determined by me or under my direction and control and that this U.S. Public Land Survey Monument Record is correct and complete to the best of my knowledge and belief.

[Handwritten Signature]
 Signature

26 DEC 2017
 Date

3805252200 (INDEX NO. S,T-25)