

U.S. PUBLIC LAND SURVEY MONUMENT RECORD

Note: This form is intended and designed to fulfill all requirements of Wisconsin Administrative Code, Chapter A-E 7.08 U.S. Public Land Survey Monument Record (3) (a) (b) (c) (d) (e) (f) (g) (h) (i). An additional sheet may be added if necessary to conform with said requirements.

(a) CORNER LOCATION: Plane Coordinates
 Cor. of Secs. 25, 26, 35 & 36 X:
 Township 38 North Y:
 Range 5 East of the 4th P.M. Datum:
 Town of Minocqua County of Oneida

	SEC. 26		

(b) HISTORY OF ORIGINAL CORNER ESTABLISHMENT

Original Surveyor: Alexander Anderson Original Accessories:
 Date of Survey: Commenced Oct. 6, 1863 y. pine 7 N68°W, 6 lks.
 Completed Oct. 13, 1863 w. pine 7 N60°E, 14 lks.

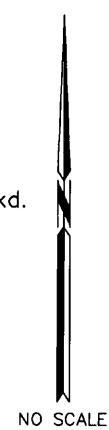
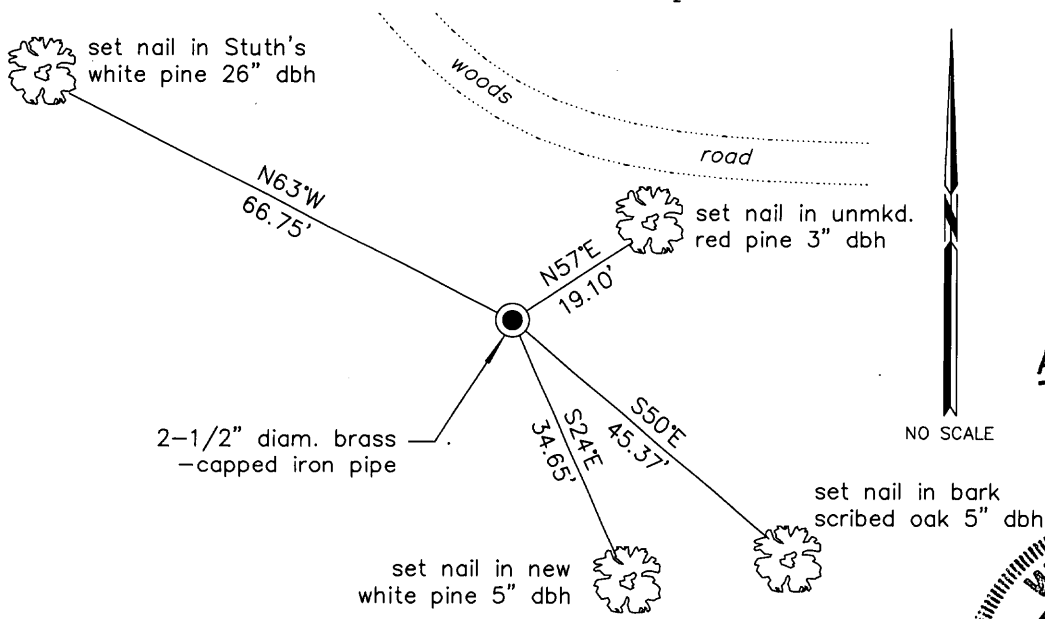
(b) (f) (g) (h) Description of monument found at this corner and if it was accepted, state all evidence (material, testimonial, occupational, plats, records, other monuments) used as a basis for accepting. If not accepted or if nothing was found, state evidence used as basis for establishing location. If re-established through lost corner proportionate methods, indicate all monuments, distances and directions used to establish. Indicate type of monument and sign post found or set.

October, 1933: Notes by Hall on page 333 indicate he recovered the original SW corner of section 25 and set a new wood post witnessed by b. pine 5 S60°W, 65.5 lks. and w. birch 9 N76°W, 119 lks.

March 11, 1987: Map by W.H. Stuth indicates corner is "by others" and witnessed by 12" W.P. N65°W, 66.7' and 10" J.P. S60°W, 43.6'.

November 8, 2010: I found and accepted a 2-1/2" diam. iron post with unmarked brass cap projecting 32" above the ground surface. I found Hall's jack pine standing dead bearing S67°W, 43.5 ft. I established accessories as shown below and set a white plastic sign post bearing Southeast, 1 ft. dist.

(c) (d) (e) Plan view of corner with ties to at least 4 witness monuments. If in disagreement with previously established corner, show the distances between the two corners and also indicate the ties to the disputed.

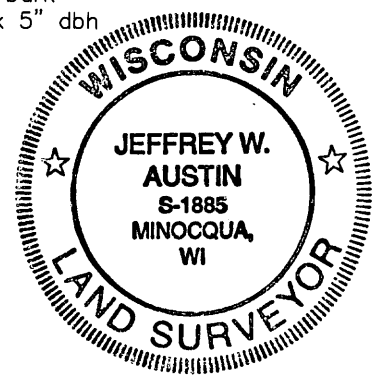


REGISTER OF DEEDS OFFICE
 ONEIDA COUNTY, WIS.

 At _____ O'Clock _____ M
THOMAS H. LEIGHTON
 REGISTER OF DEEDS

(i) I, Jeffrey W. Austin, Registered Land Surveyor No. S-1885, hereby certify upon honor that the corner location on this record was determined by me or under my direction and control and that this U.S. Public Land Survey Monument Record is correct and complete to the best of my knowledge and belief.

Signature Date DEC. 31. 2010



3805260000 (INDEX NO. V-21)