

U.S. PUBLIC LAND SURVEY MONUMENT RECORD

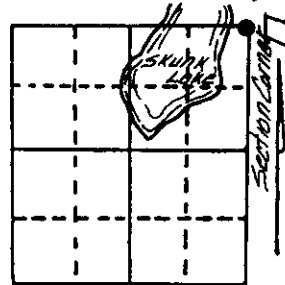
Note: This form is intended and designed to fulfill all requirements of Wisconsin Administrative Code, Chapter A-E 7.08 U.S. Public Land Survey Monument Record (3) (a) (b) (c) (d) (e) (f) (g) (h) (i). An additional sheet may be added if necessary to conform with said requirements.

(a) Corner location: Township 38 North

Range 5 East/West

Town/City/Village Minocqua

County Oneida



Section 34

(b) (f) (g) (h) Description of monument found at this corner and if it was accepted, state all evidence (material, testimonial, occupational, plats, records, other monuments) used as a basis for accepting. If not accepted or if nothing was found, state evidence used as basis for establishing location. If reestablished through lost corner proportionate methods, indicate all monuments, distances and directions used to establish.

October 1863 - Alexander Anderson, Deputy Surveyor, set for corner to Sections 26, 27, 34, and 35. Original bearing trees: Tamarack 7", N43°W, 32 links; Tamarack 7", S87½°W, 32 links.

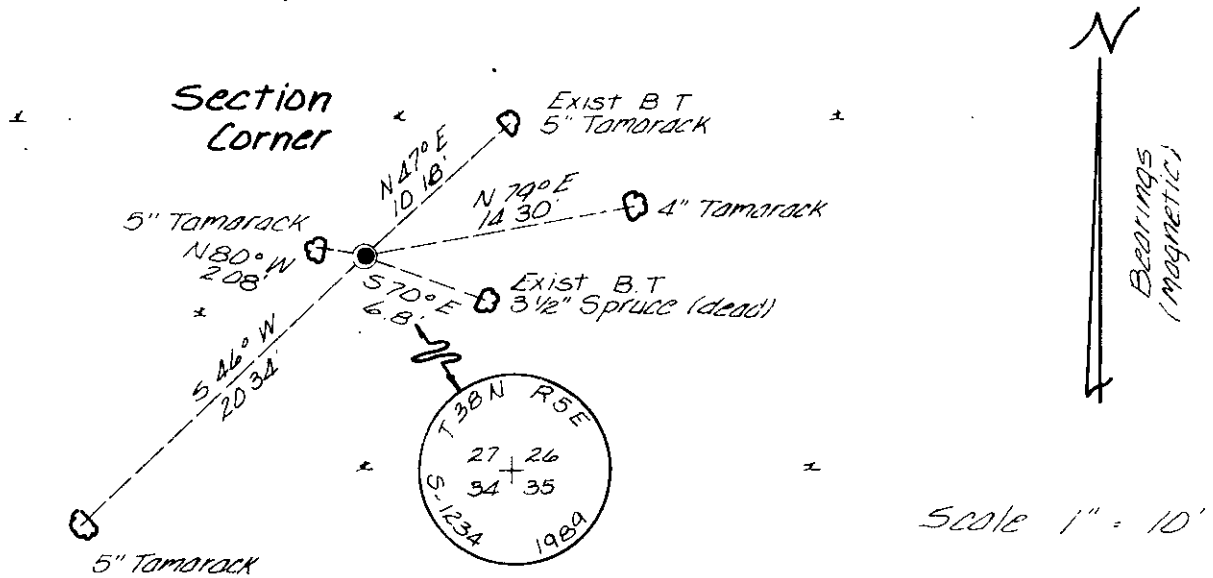
October 1940 - Ray Hall, CCC Surveyor, recovered V. M. Maines post for the NE of 34.

January 1958 - William S. Cameron, Reg Land Surveyor, identified corner as being monumented by an iron pipe and B.T.'s: 6" Spruce, N70°W, 11'; 4" Tamarack, S72°E, 6.8'.

May 25th, 1989 - James D. Rein, R.L.S. #1234, recovered corner monument (2" well point) and an old rotted wood post @ base of well point.
Existing B.T.'s: 7" Spruce stp., N70°W, 11.3 ft. (Scribing Visible)
5" Tamarack, N80°W, 2.08 ft. (Faint blaze)
3½" Spruce, S70°E, 6.8 ft. (dead)

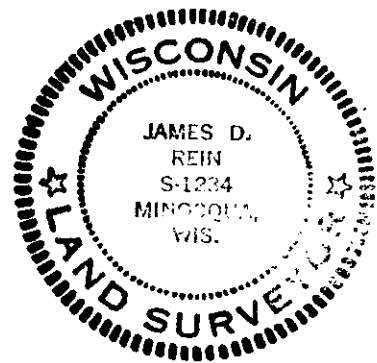
(Finished on back side)

(c) (d) (e) Plan view of corner with ties to at least 4 witness monuments. If in disagreement with previously established corner, show the distances between the two corners and also indicate the ties to the disputed corner.



(i) I, James D. Rein R.L.S. #1234
(type or print name) certify that the corner location on this record was determined by me or under my direction and control and that this U.S. Public Land Survey Monument Record is correct and complete to the best of my knowledge and belief.

James D. Rein Signature June 13th, 1989
Date



Index No. V-17

3805270000

Stock No. 26273

5" Tamarack, N47°E, 10.18 ft. (Scribing Visible)
Replaced well point with a 3" dia. aluminum capped 7 ft. long # 4 rebar,
made new B.T.'s as shown in plan and set plastic post 1 ft. northwest of
corner.