

At O'Clock M  
AND THOMAS W. LEIGHTON  
U.S. PUBLIC LAND SURVEY MONUMENT RECORD  
REGISTER OF DEEDS

Note: This form is intended and designed to fulfill all requirements of the Wisconsin Administrative Code, Chapter A-E 7.08 U.S. Public Land Monument Record (3)(a)(b)(c)(d)(e)(f)(g)(h)(i). An additional sheet may be added if necessary to conform with said requirements.

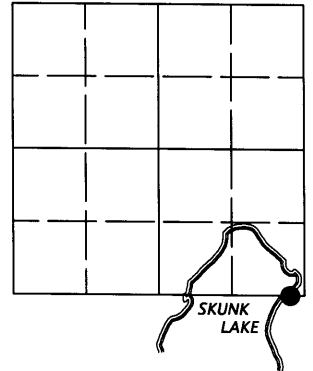
(a) CORNER LOCATION:

Meander Corner on the easterly shore of  
Skunk Lake on the south line of Section 27  
Township 38 North  
Range 5 East  
Town of Minocqua  
County of Oneida  
Wisconsin

Oneida County Coordinates

North: 204547.6991  
East: 154768.4011  
Control Station: Oneida - #206  
Latitude: 45° 45' 23.77331" N  
Longitude: 89° 50' 35.03977" W  
Datum: NAD - 83 (1991)  
Method: Real Time Kinematic -  
Post Processed - Averaged

SECTION 27



(b) HISTORY OF ORIGINAL CORNER ESTABLISHMENT

Original Surveyor: Alexander Anderson; Set Meander Corner  
Date of Survey: Commenced - October 6, 1863  
Completed - October 13, 1863

Original B.T.'S - 9" Yellow Pine; N 52°E; 10 links  
8" Birch; S 12°W; 24 links

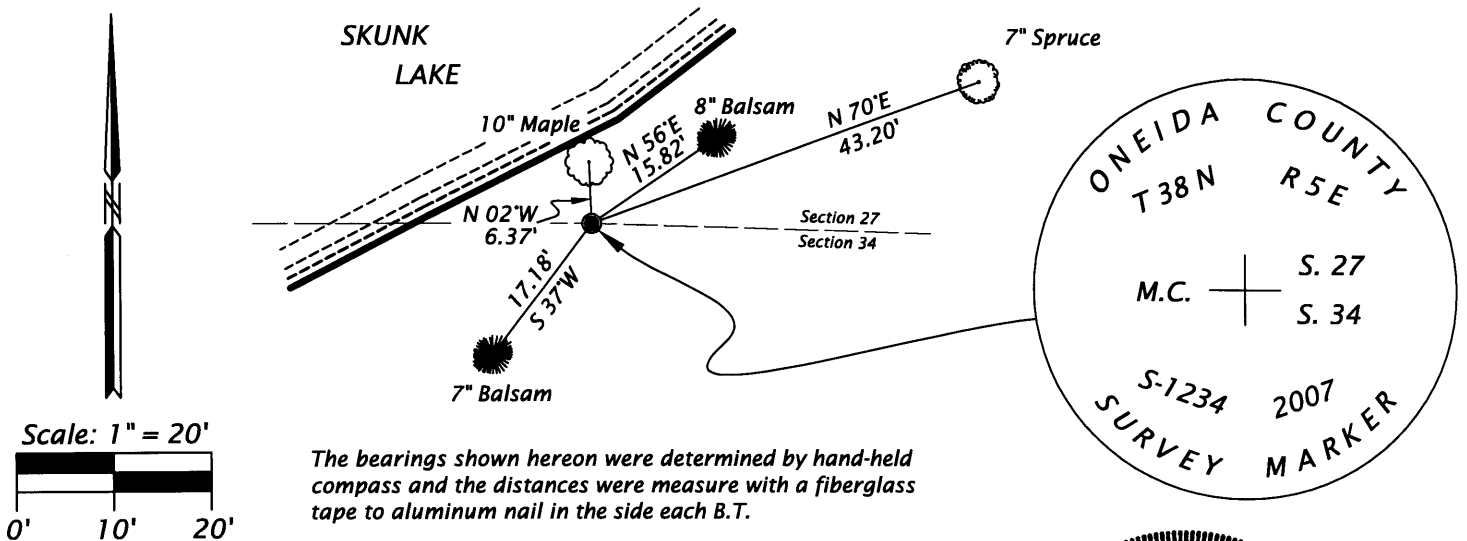
(f)(g)(h) DESCRIPTION OF MONUMENT FOUND AT THIS CORNER AND IF IT WAS ACCEPTED, STATE ALL EVIDENCE (MATERIAL, TESTIMONIAL, OCCUPATIONAL, PLATS, RECORDS, OTHER MONUMENTS) USED AS A BASIS FOR ESTABLISHING LOCATION. IF NOT ACCEPTED OF IF NOTHING WAS FOUND, STATE EVIDENCE USED AS BASIS FOR ESTABLISHING LOCATION. IF REESTABLISHED THROUGH LOST CORNER PROPORTIONATE METHODS, INDICATE ALL MONUMENTS, DISTANCES AND DIRECTIONS USED TO ESTABLISH. INDICATE TYPE OF MONUMENT AND SIGN POST FOUND OR SET.

October 10, 1940 - Ray Hall, CCC Surveyor, (Hall's CCC Book 13, page 2) found "what appears to be original MC #2, Y.P. stp with notch agreeing gov. & birch stool. Drive tempr'y peg."

January, 1958 - William S. Cameron, Registered Land Surveyor, identified MC as being monumented by an iron pipe with B.T.: 4" W. Pine, N 78°E, 35'. Shown on map by Northwoods Surveyors, dated January, 1958, and revised October, 1960, filed as Oneida County Surveyor's Office Map # C179.

July 31, 2007 - I, James D. Rein, Professional Land Surveyor No. S-1234, replaced a 1.5" o.d. iron pipe found in place with a 2.4" o.d. Oneida County capped aluminum monument. I found the previous W. Pine B.T. laid over and measured 35.0' to its stump. I made four (4) new B.T.'s as shown in the sketch below and set a white poly stake 1 foot west of corner monument.

(c)(d)(e) PLAN VIEW OF CORNER WITH TIES TO AT LEAST 4 WITNESS MONUMENTS. IF IN DISAGREEMENT WITH PREVIOUSLY ESTABLISHED CORNER, SHOW THE DISTANCE BETWEEN THE TWO CORNERS AND ALSO INDICATE THE TIES TO THE DISPUTED CORNER.



(j) I, JAMES D. REIN, PROFESSIONAL LAND SURVEYOR NO. S-1234 HEREBY CERTIFY THAT THE CORNER LOCATION ON THIS RECORD WAS DETERMINED BY ME OR UNDER MY DIRECTION AND CONTROL AND THAT THIS U.S. PUBLIC LAND SURVEY MONUMENT RECORD IS CORRECT AND COMPLETE TO THE BEST OF MY KNOWLEDGE AND BELIEF.

SIGNATURE

DATE

12/15/09



3805270002

INDEX NO. V 16-17