

U.S. PUBLIC LAND SURVEY MONUMENT RECORD

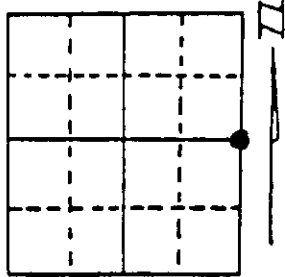
Note: This form is intended and designed to fulfill all requirements of Wisconsin Administrative Code, Chapter A-E 7.08 U.S. Public Land Survey Monument Record (3) (a) (b) (c) (d) (e) (f) (g) (h) (i). An additional sheet may be added if necessary to conform with said requirements.

(a) Corner location: Township 38 North

Range 5 East/West

Town/City/Village Minocqua

County Oneida



Section 27

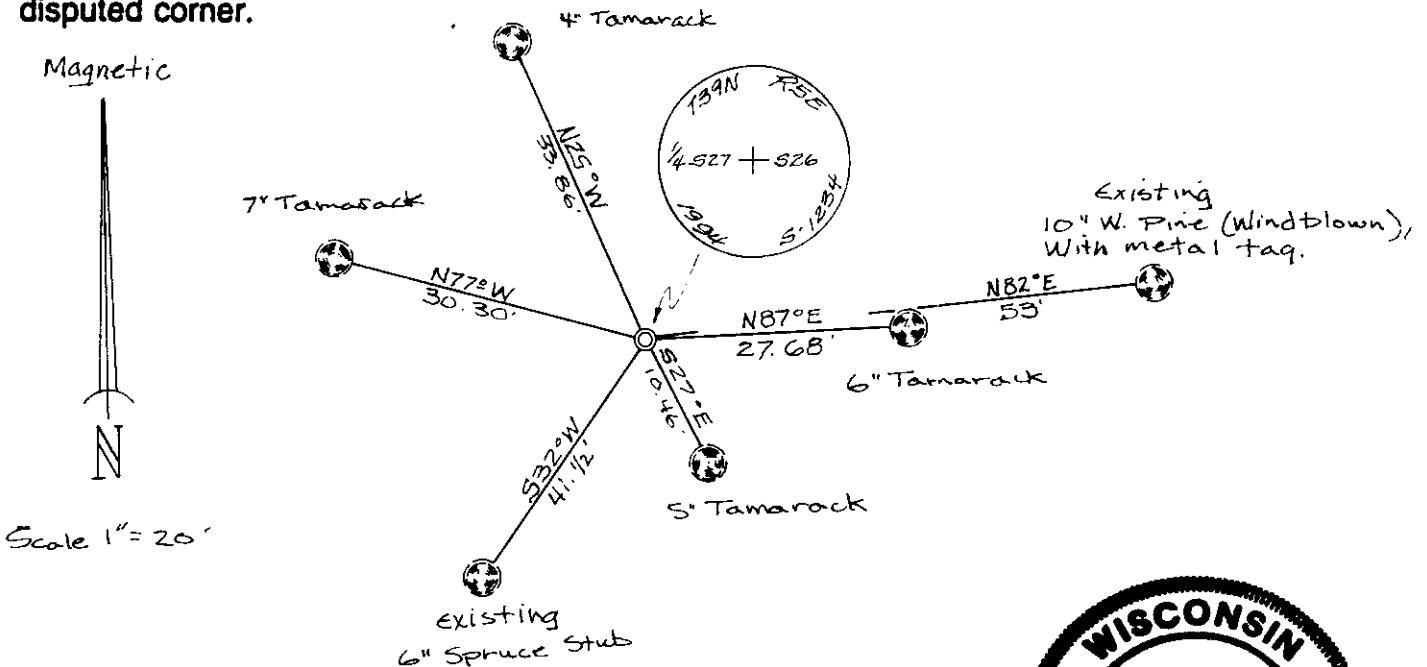
(b) (f) (g) (h) Description of monument found at this corner and if it was accepted, state all evidence (material, testimonial, occupational, plats, records, other monuments) used as a basis for accepting. If not accepted or if nothing was found, state evidence used as basis for establishing location. If reestablished through lost corner proportionate methods, indicate all monuments, distances and directions used to establish. Indicate type of monument found or set and sign post.

Oct. 6th, 1863 - Alexander Anderson, Deputy Surveyor, set 1/4 post witnessed by two bearing trees: a 10" Tamarack bearing N35°W, 6 links; and a 6" Tamarack bearing N78°E, 11 links.

April 3rd, 1978 - John H. Fisher, Registered Land Surveyor, on the plat of Ceder Falls Homesites, identifies corner as being monumented by a 1" iron pipe found in place, witnessed by a scribed post, 4" Spruce bearing S32°W, 41.0 feet, and a 10" W. Pine bearing N82°E, 53.4 feet.

Sept. 9th, 1994 - James D. Rein, Registered Land Surveyor, recovered a 1" dia. iron pipe pipe witnessed by a scribed post, 4" Spruce bearing S32°W, 41.5 feet, and a wind blown 10" W. Pine bearing N82°E, 53.4 feet. I replaced the iron pipe with a capped 2" dia. aluminum monument. Made new reference ties as shown in plan view. Set plastic post 1/2 foot east of corner monument.

(c) (d) (e) Plan view of corner with ties to at least 4 witness monuments. If in disagreement with previously established corner, show the distances between the two corners and also indicate the ties to the disputed corner.



(i) I, James D. Rein, Registered Land Surveyor No. 1234
 (type or print name) certify that the corner location on this record was determined by me or under my direction and control and that this U.S. Public Land Survey Monument Record is correct and complete to the best of my knowledge and belief.

James D. Rein

October 25th, 1994

Signature

Date



3805272000

Stamp

Index No. T-17