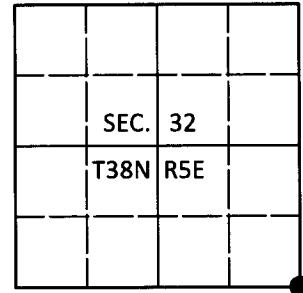


# U.S. PUBLIC LAND SURVEY MONUMENT RECORD

Note: This form is intended and designed to fulfill all requirements of Wisconsin Administrative Code, Chapter A-E 7.08 U.S. Public Land Survey Monument Record (3)(a-i).

(a) CORNER LOCATION  
 Cor. of Secs. 4, 5, 32 & 33  
 Township 37 & 38 North  
 Range 5 East of the 4th P.M.  
 Town of Little Rice & Minocqua  
 County of Oneida

WISCORS - Oneida County  
 N: 199,181.42 USft  
 E: 144,435.50 USft  
 Datum: NAD 83(2011)  
 GNSS Method: RTN - Offset  
 GNSS Control: WISCORS VRS



(b) HISTORY OF ORIGINAL CORNER ESTABLISHMENT

Original Surveyor: Alfred Millard

Original Accessories:

Date of Survey      Commenced: Sept., 1860  
 Completed: Sept., 1860

- W. Pine 7" S60°E, 13 lks.
- W. Pine 8" N57°W, 46 lks.
- W. Pine 6" S84°W, 30 lks.
- W. Pine 8" N73°E, 36 lks.

(b)(f)(g)(h) Description of monument found at this corner and if it was accepted, state all evidence (material, testimonial, occupational, plats, records, other monuments) used as a basis for accepting. If not accepted or if nothing was found, state evidence used as basis for establishing location. If re-established through lost corner proportionate methods, indicate all monuments, distances and directions used to establish. Indicate type of monument and sign post found or set.

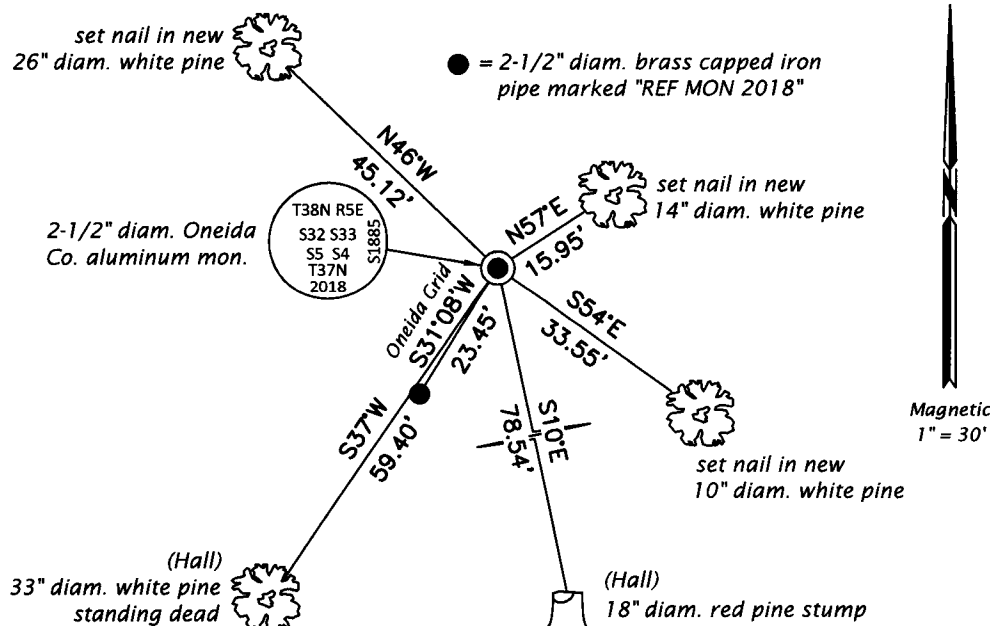
*April 27, 1938: Notes by Ray Hall in CCC book 10 on page 39. "Unable to reconcile Valley post with any original evidence. The 28" pine (page 19) being marked thru 3 miles (S. line 33-34-35) was found to be (respectively) 81.266, 81.026, 81.03 and since Valley surveyor worked 14 years ago - will accept his post. Some jack pines down around post have old cruiser's marks and in and around post are scraps of iron and a bottle. Substitute a 3-1/2" I.P. (anchored) and set up a wood post. Y.P. 18" S12°E, 1.19."*

*On page 19, the pine is: W.P. 28" S34°W, .90*

*June 14, 2018: I found a 2-1/2" diam. unmarked brass capped iron pipe of unknown origin. The pipe does not agree with Hall's measurement to a large white pine standing dead that is likely the tree mentioned in his notes as it has an old WCD tag with sign-ins dating back to 1948. From the large pine, I measured N34°E, 0.90 ch. and established a temporary point having found no evidence of Hall's monument. From the temporary point, I measured S12°E, 1.19 ch. and found the stump of Hall's distances and refined my temporary point. From this point, the distance East to the quarter-section corner agrees with Hall's distance to 1.00 ft. At the quarter-section corner, the section line angle agrees with Hall's angle to 23 seconds. I accept this as sufficient evidence and monument the point as follows. I set a 2-1/2" diam., 60" long aluminum pipe with a 3-1/4" diam. Oneida Co. aluminum cap projecting 12" above the ground surface. I found or established accessories as shown below. I set a white vinyl sign post bearing Northwest, 0.7 ft.*

*The coordinate value shown has been verified by at least one of the following methods: 1) comparison to a previously GPS determined published value; 2) the value is the average of two or more GPS observations at a markedly different time; 3) one or more distances were measured back to the GPS observed corner from temporary GPS observed offset locations.*

(c)(d)(e) Plan view of corner with ties to at least 4 witness monuments. If in disagreement with previously established corner, show the distances between the two corners and also indicate the ties to the disputed.



REGISTER OF DEEDS OFFICE  
 ONEIDA COUNTY  
 FILED

**JUL 12 2018**

KYLE J. FRANSON  
 REGISTER OF DEEDS

(i) I, Jeffrey W. Austin, Professional Land Surveyor No. S-1885, hereby certify that the corner location on this record was determined by me or under my direction and control and that this U.S. Public Land Survey Monument Record is correct and complete to the best of my knowledge and belief.

*[Handwritten Signature]*  
 \_\_\_\_\_  
 Signature

**JUNE 30, 2018**  
 \_\_\_\_\_  
 Date

3805320000 (INDEX NO. Z-9)