

U.S. PUBLIC LAND SURVEY MONUMENT RECORD  
REGISTER OF DEEDS

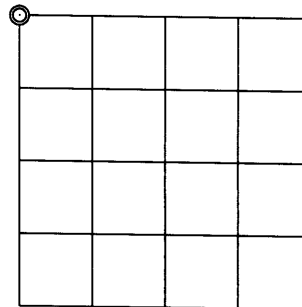
Note: This form is intended and designed to fulfill all requirements of the Wisconsin Administrative Code, Chapter A-E 7.08 U.S. Public Land Monument Record (3)(a)(b)(c)(d)(e)(f)(g)(h)(i). An additional sheet may be added if necessary to conform with said requirements.

(a) CORNER LOCATION:

Northwest corner of Section 3  
Township 37 North  
Range 5 East  
Town Little Rice  
County of Oneida

O. C. COORDINATES

North: 199177.8707  
East: 149796.0179  
Control Station: O.C. 292  
Latitude: 45°42'46.77084" N  
Longitude: 89°50'42.63660" W  
Datum: NAD 83 (91)  
Method: RTK GPS



(b) HISTORY OF ORIGINAL CORNER ESTABLISHMENT

Original Surveyor: Alfred Millard, Deputy Surveyor  
Date of Survey: Commenced September 12, 1860  
Completed September 12, 1860

Original B.T.'S: Tamarac 4", S34°E, 25 links (16.50 feet)  
Tamarac 3", N45°W, 13 links (8.58 feet)  
Tamarac 3", S65°W, 11 links (7.62 feet)  
Spruce 6", N61°E, 27 links (17.82 feet)

SECTION 3

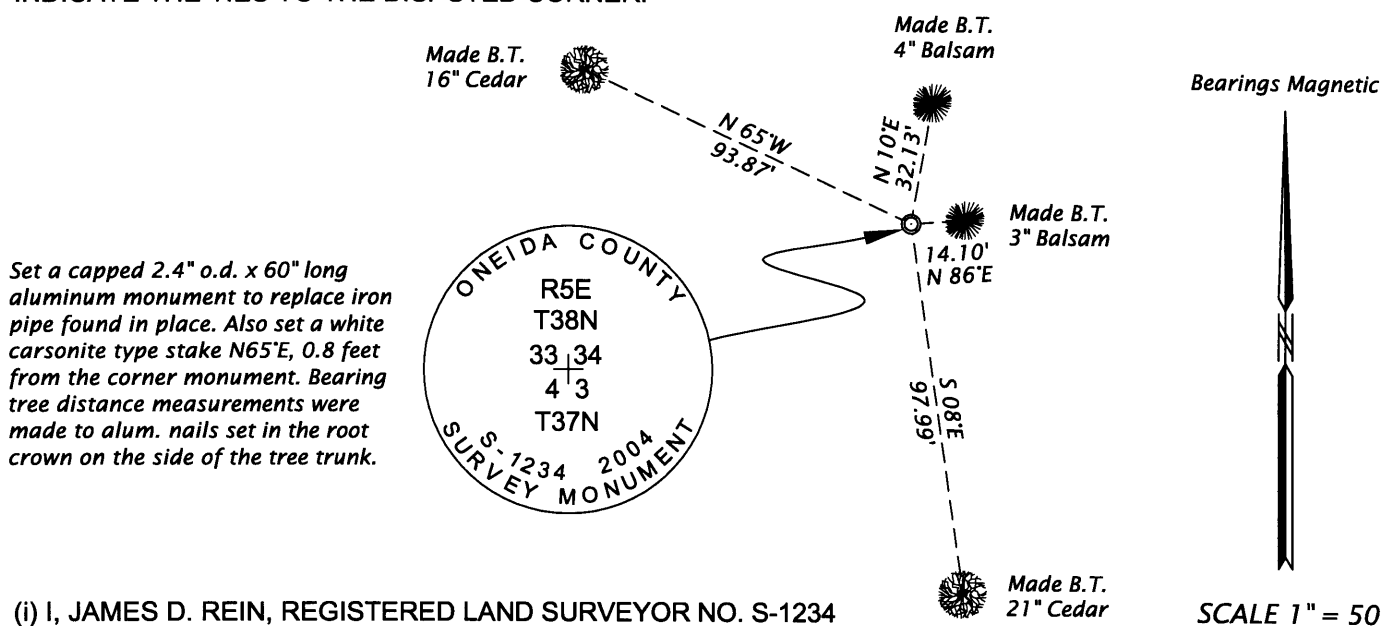
(f)(g)(h) DESCRIPTION OF MONUMENT FOUND AT THIS CORNER AND IF IT WAS ACCEPTED, STATE ALL EVIDENCE (MATERIAL, TESTIMONIAL, OCCUPATIONAL, PLATS, RECORDS, OTHER MONUMENTS) USED AS A BASIS FOR ESTABLISHING LOCATION. IF NOT ACCEPTED OF IF NOTHING WAS FOUND, STATE EVIDENCE USED AS BASIS FOR ESTABLISHING LOCATION. IF REESTABLISHED THROUGH LOST CORNER PROPORTIONATE METHODS, INDICATE ALL MONUMENTS, DISTANCES AND DIRECTIONS USED TO ESTABLISH. INDICATE TYPE OF MONUMENT AND SIGN POST FOUND OR SET.

February 11th through April 27, 1938 - Ray H. Hall, CC Camp 75-S Survey Book 10, Pages 4, 16 and 38 - Examine evidence at SE corner of Section 33 - 38 - 5E, as marked by Wis. Valley post - See pages 4 & 16 - \* Accept their post as set - Substitute a new Tam post and iron pipe & mark Var. 0° {Spruce 6", S20°E, .18 chains (11.88 feet) and Tam. stp. 5" N68°E, .38 chains (25.08 feet)}. Hall's field notes place this corner true bearing S89°42'30"W, 81.051 chains (5349.37 feet) from the original southeast corner of Section 34, T38N, R5E.

5/20/86 - Owens - Illinois map drawn by W. H. Stuth, representing a 1965 survey in Section 34, T38N, R5E, dimensions the south section line bearing S89°07'W, 5346.2' between the section corners.

November 17, 2004 - James D. Rein, RLS # 1234, recover a 1" inside diameter x 26" long iron pipe, up 1 foot, driven into a 3" diameter x 20" long Cedar post in semi open swamp. Only a small hummock with a 2" diameter Balsam at Hall's Spruce B.T. S20°E, 12 feet. I replace the iron pipe with a capped 2.4" o.d. x 60" long aluminum monument extending 6" above ground level, marked as shown in plan. Also set a white carsonite type stake N65°E, 0.8 feet from the corner and made new bearing trees as shown in the plan. Our measurement between the section corners is S89°57'56"W (O.C. Grid), 5344.64 feet.

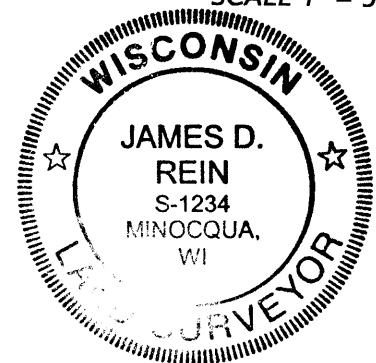
(c)(d)(e) PLAN VIEW OF CORNER WITH TIES TO AT LEAST 4 WITNESS MONUMENTS. IF IN DISAGREEMENT WITH PREVIOUSLY ESTABLISHED CORNER, SHOW THE DISTANCE BETWEEN THE TWO CORNERS AND ALSO INDICATE THE TIES TO THE DISPUTED CORNER.



(i) I, JAMES D. REIN, REGISTERED LAND SURVEYOR NO. S-1234 HEREBY CERTIFY THAT THE CORNER LOCATION ON THIS RECORD WAS DETERMINED BY ME OR UNDER MY DIRECTION AND CONTROL AND THAT THIS U.S. PUBLIC LAND SURVEY MONUMENT RECORD IS CORRECT AND COMPLETE TO THE BEST OF MY KNOWLEDGE AND BELIEF.

SIGNATURE *[Handwritten Signature]*

DATE *June 5th, 2005*  
*3805330000*



INDEX NO. *A/13*