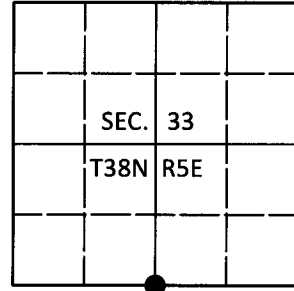


# U.S. PUBLIC LAND SURVEY MONUMENT RECORD

Note: This form is intended and designed to fulfill all requirements of Wisconsin Administrative Code, Chapter A-E 7.08 U.S. Public Land Survey Monument Record (3)(a-i).

(a) CORNER LOCATION  
 1/4 Cor. of Secs. 4 & 33  
 Township 37 & 38 North  
 Range 5 East of the 4th P.M.  
 Town of Little Rice & Minocqua  
 County of Oneida

WISCORS - Oneida County  
 N: 199,160.97 USft  
 E: 147,123.92 USft  
 Datum: NAD 83(2011)  
 GNSS Method: RTN - Direct  
 GNSS Control: WISCORS VRS



(b) HISTORY OF ORIGINAL CORNER ESTABLISHMENT

Original Surveyor: Alfred Millard

Original Accessories:

Date of Survey      Commenced: Sept., 1860  
                                  Completed: Sept., 1860

Tamarack 5" N40°W, 3 lks.  
 Spruce 4" S68°E, 12 lks.

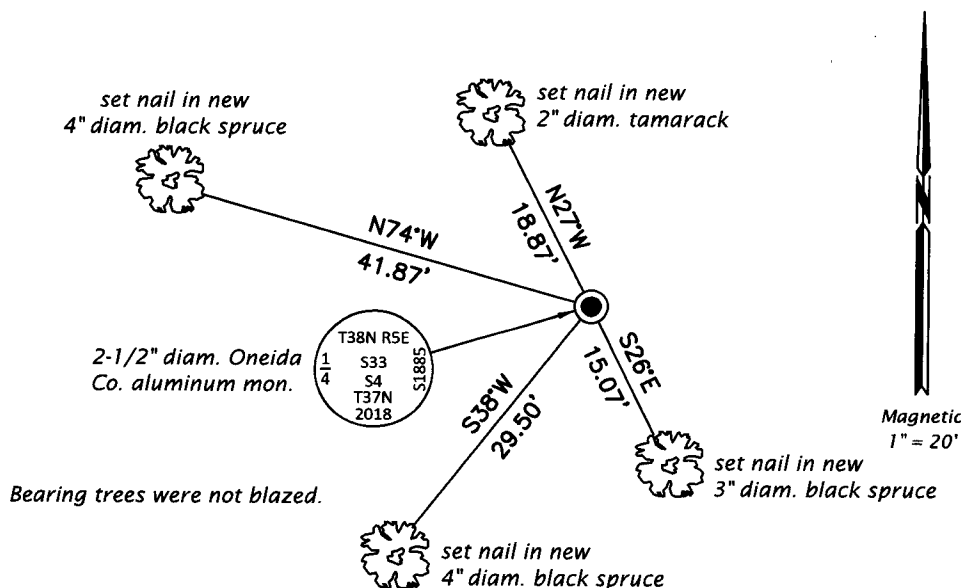
(b)(f)(g)(h) Description of monument found at this corner and if it was accepted, state all evidence (material, testimonial, occupational, plats, records, other monuments) used as a basis for accepting. If not accepted or if nothing was found, state evidence used as basis for establishing location. If re-established through lost corner proportionate methods, indicate all monuments, distances and directions used to establish. Indicate type of monument and sign post found or set.

*April 27, 1938: Notes by Ray Hall in CCC book 10 on page 38 identify corner as marked by a 4 ft. galvanized pipe witnessed by: spruce 5" N83°E, 1.135 ch. and spruce 5" N11°W, 1.545 ch. Hall's monument was set from the remains of both original bearing trees.*

*June 14, 2018: I found and accepted the record monument, a 1-1/4" diam., 60" long galvanized iron pipe. I also found two 2" diam., 31" long iron pipes near the corner point. I was unable to recover evidence of Hall's bearing trees. The distance East to the section corner agrees with the Hall distance to 1.90 ft. The distance West to the section corner agrees with the Hall distance to 1.00 ft. The angle at this corner agrees with the Hall angle to 23 seconds. To replace Hall's pipe, I set a 2-1/2" diam., 60" long aluminum pipe with a 3-1/4" diam. Oneida Co. aluminum cap projecting 8" above the bog surface. I set a blue/black DEEP-1 magnet adjacent to the monument. I found or established accessories as shown below. I set a white vinyl sign post bearing Northwest, 0.6 ft.*

*The coordinate value shown has been verified by at least one of the following methods: 1) comparison to a previously GPS determined published value; 2) the value is the average of two or more GPS observations at a markedly different time; 3) one or more distances were measured back to the GPS observed corner from temporary GPS observed offset locations.*

(c)(d)(e) Plan view of corner with ties to at least 4 witness monuments. If in disagreement with previously established corner, show the distances between the two corners and also indicate the ties to the disputed.



REGISTER OF DEEDS OFFICE  
 ONEIDA COUNTY  
 FILED

**JUL 12 2018**

KYLE J. FRANSON  
 REGISTER OF DEEDS

(i) I, Jeffrey W. Austin, Professional Land Surveyor No. S-1885, hereby certify that the corner location on this record was determined by me or under my direction and control and that this U.S. Public Land Survey Monument Record is correct and complete to the best of my knowledge and belief.

*[Handwritten Signature]*  
 \_\_\_\_\_  
 Signature

**JUNE 30, 2018**  
 \_\_\_\_\_  
 Date