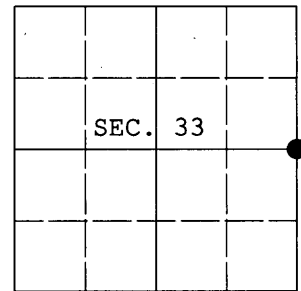


U.S. PUBLIC LAND SURVEY MONUMENT RECORD

Note: This form is intended and designed to fulfill all requirements of Wisconsin Administrative Code, Chapter A-E 7.08 U.S. Public Land Survey Monument Record (3) (a) (b) (c) (d) (e) (f) (g) (h) (i). An additional sheet may be added if necessary to conform with said requirements.

(a) CORNER LOCATION: Plane Coordinates
 1/4 Cor. of Secs. 33 & 34 X:
 Township 38 North Y:
 Range 5 East of the 4th P.M. Datum:
 Town of Minocqua County of Oneida



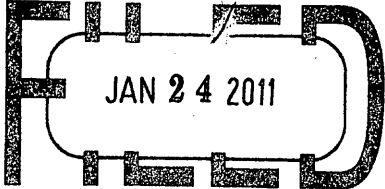
(b) HISTORY OF ORIGINAL CORNER ESTABLISHMENT

Original Surveyor: Alexander Anderson Original Accessories:
 Date of Survey: Commenced Oct. 6, 1863 tamarac 9 S13°E, 14 lks.
 Completed Oct. 13, 1863 tamarac 5 N30°W, 12 lks.

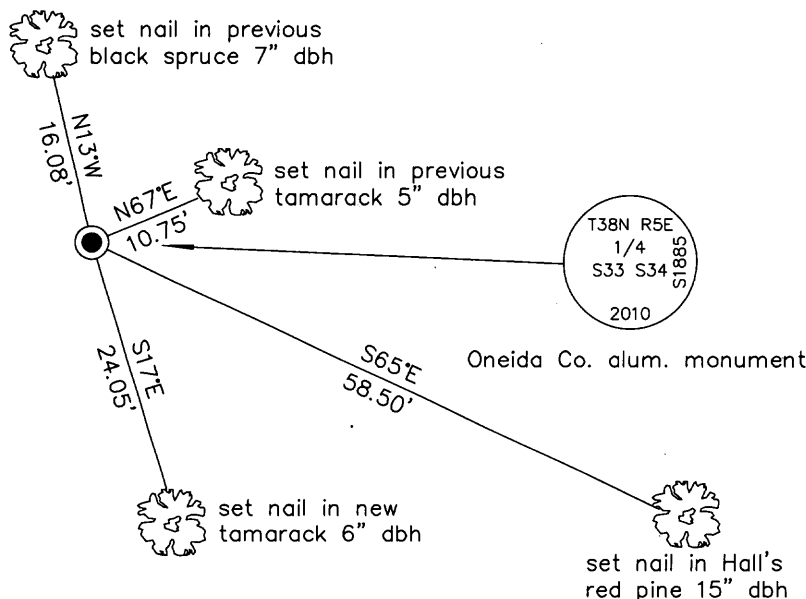
(b) (f) (g) (h) Description of monument found at this corner and if it was accepted, state all evidence (material, testimonial, occupational, plats, records, other monuments) used as a basis for accepting. If not accepted or if nothing was found, state evidence used as basis for establishing location. If re-established through lost corner proportionate methods, indicate all monuments, distances and directions used to establish. Indicate type of monument and sign post found or set.

February 9, 1938: Notes by Hall, CCC book 10 on page 1 indicate he set a new wood post from the remains of one original bearing tree witnessed by y. pine 11 S67°E, 0.88 ch. and y. pine 15 S43°E, 0.978 ch.

November 10, 2010: I found and accepted a 1-3/4" diam. iron pipe and old wood post. I found Hall's red pine 20" standing dead at S41°E, 65 ft. Over the pipe, I set a 30" long, 2-1/2" diam. aluminum post with Oneida Co. aluminum cap projecting 12" above the bog and marked as shown below. I established accessories as shown below and set a white plastic sign post bearing Northwest, 1 ft. dist.

REGISTER OF DEEDS OFFICE
 ONEIDA COUNTY, WIS.

 At _____ O'Clock _____ M
THOMAS H. LEIGHTON
 REGISTER OF DEEDS

(c) (d) (e) Plan view of corner with ties to at least 4 witness monuments. If in disagreement with previously established corner, show the distances between the two corners and also indicate the ties to the disputed.



(i) I, Jeffrey W. Austin, Registered Land Surveyor No. S-1885, hereby certify upon honor that the corner location on this record was determined by me or under my direction and control and that this U.S. Public Land Survey Monument Record is correct and complete to the best of my knowledge and belief.



Signature

DEC. 31, 2010
 Date