

At 1 O'Clock M
U.S. PUBLIC LAND SURVEY MONUMENT RECORD

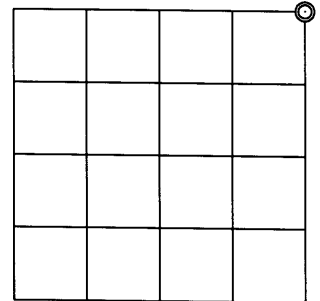
Note: This form is intended and designed to fulfill all requirements of the Wisconsin Administrative Code, Chapter A-E 7.08 U.S. Public Land Monument Record (3)(a)(b)(c)(d)(e)(f)(g)(h)(i). An additional sheet may be added if necessary to conform with said requirements.

(a) CORNER LOCATION:

Northeast corner of Section 3
Township 37 North
Range 5 East
Town of Little Rice
County of Oneida

O. C. COORDINATES

North: 199181.0768
East: 155140.6518
Control Station: O.C. 292
Latitude: 45°42'46.77084" N
Longitude: 89°50'42.63660" W
Datum: NAD 83 (91)
Method: Offset traverse-RTK GPS control



(b) HISTORY OF ORIGINAL CORNER ESTABLISHMENT

Original Surveyor: Alfred Millard, Deputy Surveyor
Date of Survey: Commenced September 12, 1860
Completed September 12, 1860

Original B.T.'S: Y. Pine 14", S40°E, 39 links (25.74 feet)
Y. Pine 12", N67°W, 46 links (30.36 feet)
Y. Pine 14", S64°W, 43 links (28.38 feet)
W. Pine 14", N5°E, 21 links (13.86 feet)

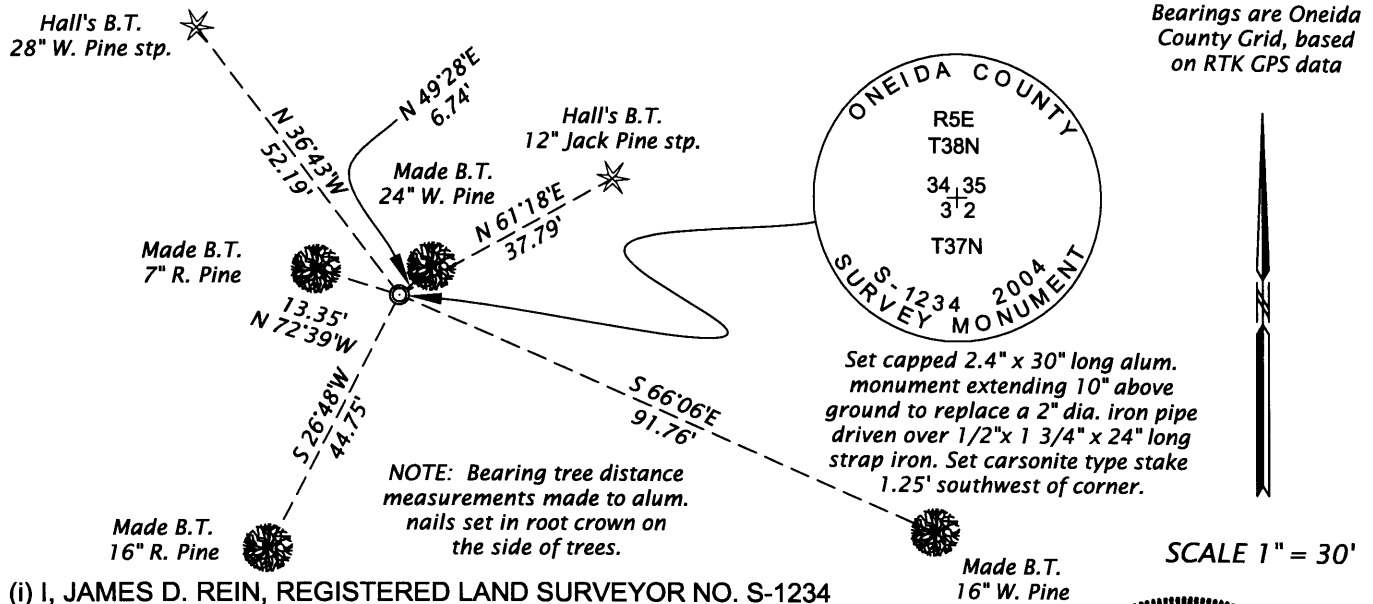
SECTION 3

(f)(g)(h) DESCRIPTION OF MONUMENT FOUND AT THIS CORNER AND IF IT WAS ACCEPTED, STATE ALL EVIDENCE (MATERIAL, TESTIMONIAL, OCCUPATIONAL, PLATS, RECORDS, OTHER MONUMENTS) USED AS A BASIS FOR ESTABLISHING LOCATION. IF NOT ACCEPTED OF IF NOTHING WAS FOUND, STATE EVIDENCE USED AS BASIS FOR ESTABLISHING LOCATION. IF REESTABLISHED THROUGH LOST CORNER PROPORTIONATE METHODS, INDICATE ALL MONUMENTS, DISTANCES AND DIRECTIONS USED TO ESTABLISH. INDICATE TYPE OF MONUMENT AND SIGN POST FOUND OR SET.

August 22 nd, 1933 - Ray H. Hall, Surveyor - Survey Book 59, page 36 and transcribed in Hall's Book 1, Page 153 - Set post and piece of strap iron at Orig'l Cor to 34-35-3-2 by record distance from 4 stumps - NW stp. has pretty good facing. Assume Variation of 2°30'E, Originals bear {S36°E, N67 1/2 °W, S60 1/2 °W and N 1/2 °E} New {Jack Pine 6", N61°-15'E, .571 chains (37.62 feet) and a W. Pine 6", N36°-30'W, .78 chains (51.48 feet)

November 10, 2004 - James D. Rein, RLS No. 1234 - Recovered a 2" inside diameter x 30" long iron pipe driven over a 1/2" x 1 3/4" x 24" long strap iron, referenced by the stumps of Hall's bearing trees as shown below in plan. I replace the iron pipe and strap iron with a capped 2.4" x 30" long flange bottom aluminum monument, marked as shown. We set a white carsonite type stake S45°W, 1.25 feet from the corner and made new bearing tree ties as shown in the plan view.

(c)(d)(e) PLAN VIEW OF CORNER WITH TIES TO AT LEAST 4 WITNESS MONUMENTS. IF IN DISAGREEMENT WITH PREVIOUSLY ESTABLISHED CORNER, SHOW THE DISTANCE BETWEEN THE TWO CORNERS AND ALSO INDICATE THE TIES TO THE DISPUTED CORNER.



(i) I, JAMES D. REIN, REGISTERED LAND SURVEYOR NO. S-1234 HEREBY CERTIFY THAT THE CORNER LOCATION ON THIS RECORD WAS DETERMINED BY ME OR UNDER MY DIRECTION AND CONTROL AND THAT THIS U.S. PUBLIC LAND SURVEY MONUMENT RECORD IS CORRECT AND COMPLETE TO THE BEST OF MY KNOWLEDGE AND BELIEF

SIGNATURE

June 5, 2005
DATE 3805340000



INDEX NO. 17