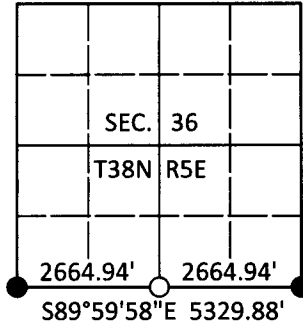


U.S. PUBLIC LAND SURVEY MONUMENT RECORD

Note: This form is intended and designed to fulfill all requirements of Wisconsin Administrative Code, Chapter A-E 7.08 U.S. Public Land Survey Monument Record (3)(a-i).

(a) CORNER LOCATION
 1/4 Cor. of Secs. 1 & 36
 Township 37 & 38 North
 Range 5 East of the 4th P.M.
 Town of Little Rice & Minocqua
 County of Oneida

WISCORS - Oneida County
 N: 199,200.11 USft
 E: 163,152.35 USft
 Datum: NAD 83(1991)
 GNSS Method: RTN - Direct
 GNSS Control: WISCORS VRS



(b) HISTORY OF ORIGINAL CORNER ESTABLISHMENT

Original Surveyor: Alfred Millard

Original Accessories:

Date of Survey Commenced: Sept., 1860
 Completed: Sept., 1860

Spruce 7" N45°W, 14 lks.
 Spruce 9" S5°W, 12 lks.

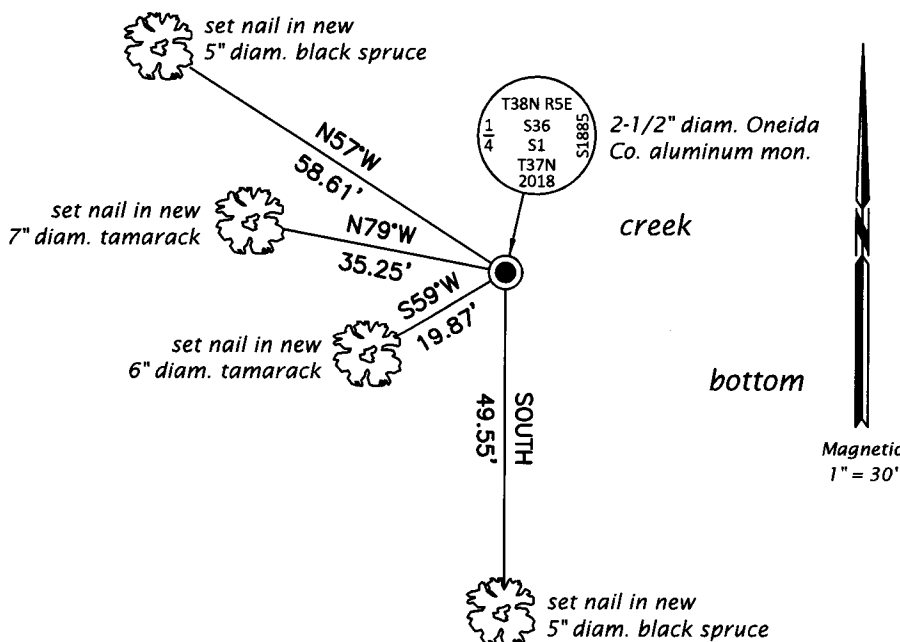
(b)(f)(g)(h) Description of monument found at this corner and if it was accepted, state all evidence (material, testimonial, occupational, plats, records, other monuments) used as a basis for accepting. If not accepted or if nothing was found, state evidence used as basis for establishing location. If re-established through lost corner proportionate methods, indicate all monuments, distances and directions used to establish. Indicate type of monument and sign post found or set.

1962: Subdivision of Sec. 1 in NEPCO book 1 on page 120 identifies corner as marked by "iron pipe or cap" witnessed by: 10" J.P. N3°E, 32.8' and 7" J.P. S78°W, 24.0'

June 19, 2018: I found the record monument, a 1-1/4" diam., 60" long iron pipe lying flat at the corner point. I was unable to recover evidence of either record bearing tree. As the measured mile checks the NEPCO work within a few tenths of a foot, I repositioned the corner at the midpoint of the section line. At the corner point, I set a 2-1/2" diam., 36" long aluminum pipe with a 3-1/4" diam. Oneida Co. aluminum cap flush with the ground surface. I found or established accessories as shown below. I set a white vinyl sign post bearing Northwest, 0.8 ft.

The coordinate value shown has been verified by at least one of the following methods: 1) comparison to a previously GPS determined published value; 2) the value is the average of two or more GPS observations at a markedly different time; 3) one or more distances were measured back to the GPS observed corner from temporary GPS observed offset locations.

(c)(d)(e) Plan view of corner with ties to at least 4 witness monuments. If in disagreement with previously established corner, show the distances between the two corners and also indicate the ties to the disputed.

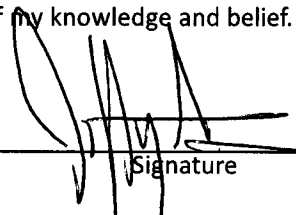


REGISTER OF DEEDS OFFICE
 ONEIDA COUNTY
 FILED

JUL 12 2018

KYLE J. FRANSON
 REGISTER OF DEEDS

(i) I, Jeffrey W. Austin, Professional Land Surveyor No. S-1885, hereby certify that the corner location on this record was determined by me or under my direction and control and that this U.S. Public Land Survey Monument Record is correct and complete to the best of my knowledge and belief.

 Signature
 JUNE 30, 2018 Date