

U.S. PUBLIC LAND SURVEY MONUMENT RECORD

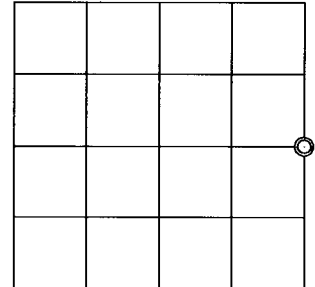
JUN 01 2017

Note: This form is intended and designed to fulfill all requirements of the Wisconsin Administrative Code, Chapter A-E 7.08 U.S. Public Land Monument Record (3)(a)(b)(c)(d)(e)(f)(g)(h)(i). An additional sheet may be added if necessary to conform with said requirements.

AT _____ O'CLOCK _____ M
KYLE J. FRANSON
REGISTER OF DEEDS

(a) CORNER LOCATION: WISCRS - Oneida County
East Quarter Corner of Section 36
Township 38 North
Range 5 East
Town of Minocqua
County of Oneida
North: 201850.263 USft
East: 165793.721 USft
Latitude: 45° 44' 21.68944" N
Longitude: 89° 47' 45.19205" W
Datum: NAD 83(2011)
GNSS Method: RTK - Direct
GNSS Control: WISCRS VRS
Record North: 201850.309 USft
Record East: 165793.628 USft
Record Datum: NAD 83(1991)

(RECORDING AREA)
SECTION 36



(b) HISTORY OF ORIGINAL CORNER ESTABLISHMENT

Original Surveyor: Alfred Millard
Date of Survey: Commenced September, 1860
Completed September, 1860
Original B.T.'S: Y. Pine 8" N 57°W, 5 lks.
W. Pine 6" N 47°E 21 lks.

(f)(g)(h) DESCRIPTION OF MONUMENT FOUND AT THIS CORNER AND IF IT WAS ACCEPTED, STATE ALL EVIDENCE (MATERIAL, TESTIMONIAL, OCCUPATIONAL, PLATS, RECORD, OTHER MONUMENTS) USED AS A BASIS FOR ESTABLISHING LOCATION. IF NOT ACCEPTED OR IF NOTHING WAS FOUND, STATE EVIDENCE USED AS BASIS FOR ESTABLISHING LOCATION. IF REESTABLISHED THROUGH LOST CORNER PROPORTIONATE METHODS, INDICATE ALL MONUMENTS, DISTANCES AND DIRECTIONS USED TO ESTABLISH. INDICATE TYPE OF MONUMENT AND SIGN POST FOUND OR SET.

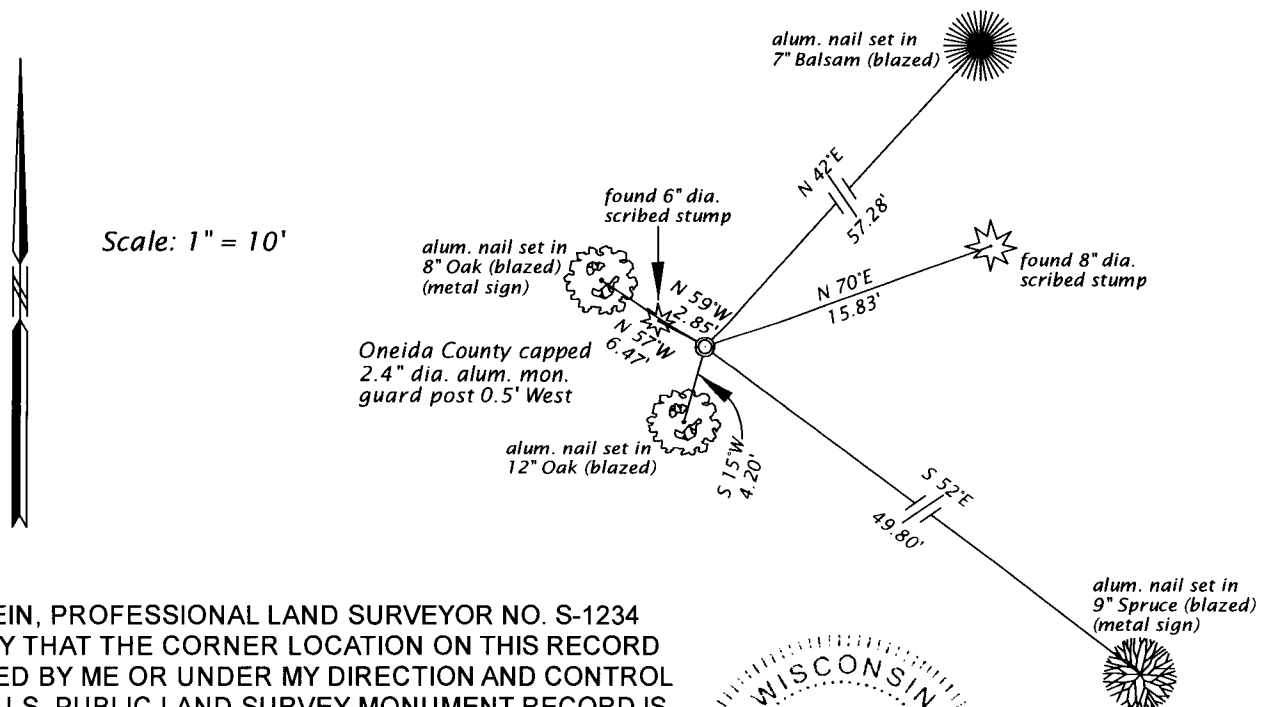
October 12, 1937 - Ray H. Hall, Surveyor, CCC Camp 75-S (CCC Book 8, page 56) Aerial Survey, Hall with Hassler, recovered original 1/4 on east line of Section 36, T38N, R5E. Set new Tam. post at record course and dist. from both orig. bngs. New bt's: Y. Pine 14" N66°E, .229 ch.; Y. Pine 5" S32°E, .391 ch.; and Y. Pine 3" S71°W, .56 ch.

1964 - Nekoosa Edwards Paper Co. and Owens-Illinois, map of lines established in Sec. 29 - 31 & 32, T38N, R6E, filed as B1318 in county surveyor's office, legends this corner an "Old Cor.", referenced by a R.P. stp. 6" N56°W, 2.9 feet; and by a R.P. stp. 10" N62°E, 15.? feet.

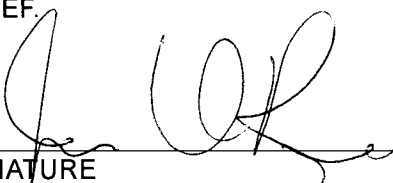
April 5, 2017 - James D. Rein, PLS No. 1234, we recovered a 2 1/2" dia. iron pipe, referenced by a scribed 8" dia., 4 feet tall pine stump bearing N70°E, 15.83 feet; and by a scribed 6" dia., low pine stump bearing N59°W, 2.85 feet. I accept the iron pipe, as being a perpetuation of the original corner position, and we replaced it with an Oneida County capped 2.4" dia. x 30" long aluminum monument and made new reference ties as shown in the plan.

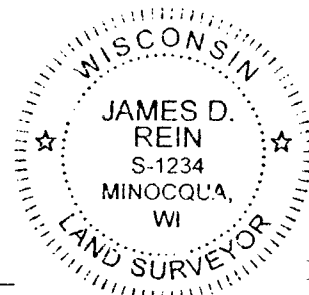
The coordinate value shown has been verified by at least one of the following methods: 1) comparison to a previously GPS determined published value; 2) the value is the average of two or more GPS observations at a markedly different time; 3) one or more distances were measured back to the GPS observed corner from temporary GPS observed offset locations.

(c)(d)(e) PLAN VIEW OF CORNER WITH TIES TO AT LEAST 4 WITNESS MONUMENTS. IF IN DISAGREEMENT WITH PREVIOUSLY ESTABLISHED CORNER, SHOW THE DISTANCE BETWEEN THE TWO CORNERS AND ALSO INDICATE THE TIES TO THE DISPUTED CORNER.



(i) I, JAMES D. REIN, PROFESSIONAL LAND SURVEYOR NO. S-1234 HEREBY CERTIFY THAT THE CORNER LOCATION ON THIS RECORD WAS DETERMINED BY ME OR UNDER MY DIRECTION AND CONTROL AND THAT THIS U.S. PUBLIC LAND SURVEY MONUMENT RECORD IS CORRECT AND COMPLETE TO THE BEST OF MY KNOWLEDGE AND BELIEF.


SIGNATURE
5-24-17
DATE



INDEX NO. X - 25
3805362000