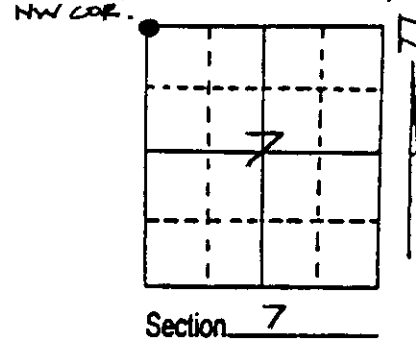


U.S. PUBLIC LAND SURVEY MONUMENT RECORD

Note: This form is intended and designed to fulfill all requirements of Wisconsin Administrative Code, Chapter A-E 7.08 U.S. Public Land Survey Monument Record (3) (a) (b) (c) (d) (e) (f) (g) (h) (i). An additional sheet may be added if necessary to conform with said requirements.

(a) Corner location: Township 38 North
 Range 7 East/West

Town/City/Village Lake Tomahawk
 County Oneida

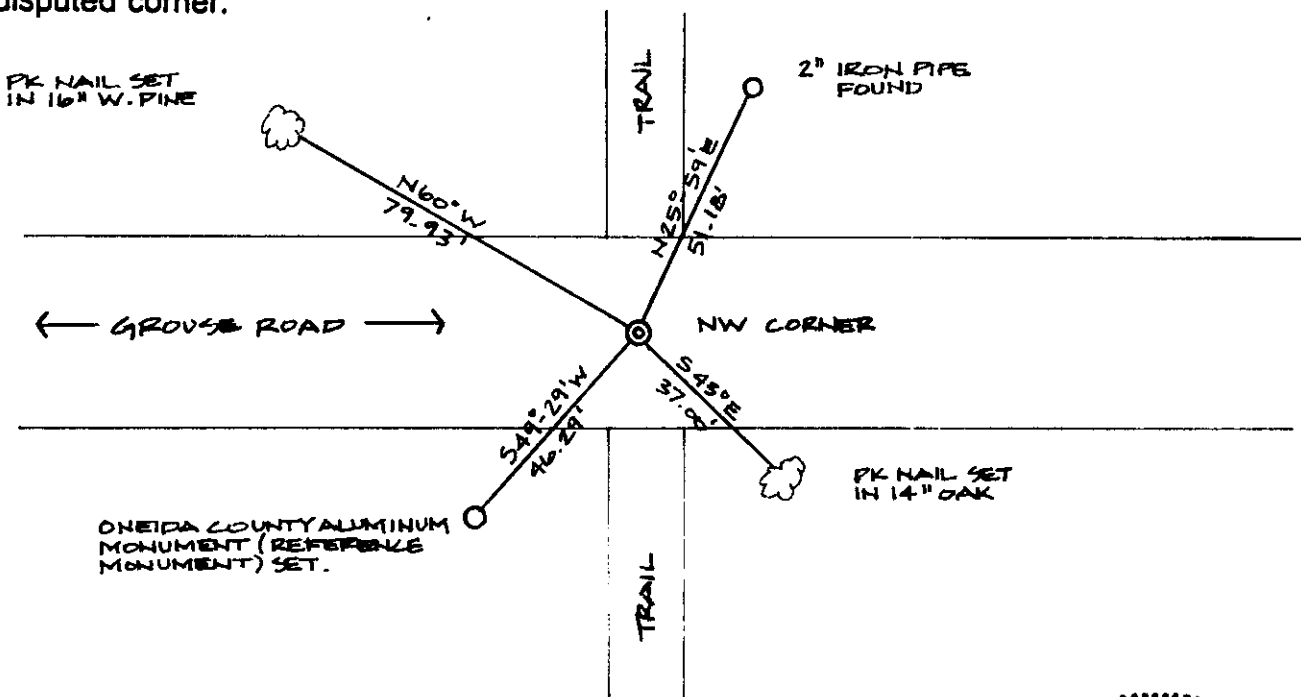


(b) (f) (g) (h) Description of monument found at this corner and if it was accepted, state all evidence (material, testimonial, occupational, plats, records, other monuments) used as a basis for accepting. If not accepted or if nothing was found, state evidence used as basis for establishing location. If reestablished through lost corner proportionate methods, indicate all monuments, distances and directions used to establish. Indicate type of monument found or set and sign post.

September, 1860: Alfred Millard set a wood post: 6" Maple S39°E, 15 Lks.; 18" Aspen S46°W, 10 Lks.; 6" W. Pine N37°W, 18 Lks; 6" W. Pine N76°E, 26 Lks.

July 15, 1992: I found and accepted a 1-3/4" iron pipe witnessed by a 2" iron pipe which bears N25°59'E, 51.18'. This pipe may have been used in previous surveys as the section corner. The 1-3/4" iron pipe fits the subdivision of Section 7 which was performed by Hall in the 1930's. The 1-3/4" iron pipe also checks with the north edge of a swamp tied in by the GLO (GLO = 20.00 Ch., meas. = 1314'). I established witnesses as shown below and set a plastic sign post near the reference monument.

(c) (d) (e) Plan view of corner with ties to at least 4 witness monuments. If in disagreement with previously established corner, show the distances between the two corners and also indicate the ties to the disputed corner.



(i) I, Charles E. Winkler, Reg. Land Surveyor
 (type or print name) certify that the corner location on this record was determined by me or under my direction and control and that this U.S. Public Land Survey Monument Record is correct and complete to the best of my knowledge and belief.

Charles E. Winkler 4/5/93
 Signature Inman-Foltz & Associates, Inc. Date



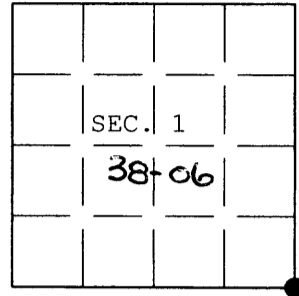
3806010000
 Stamp

Index No. E-1

U.S. PUBLIC LAND SURVEY MONUMENT RECORD

Note: This form is intended and designed to fulfill all requirements of Wisconsin Administrative Code, Chapter A-E 7.08 U.S. Public Land Survey Monument Record (3) (a) (b) (c) (d) (e) (f) (g) (h) (i). An additional sheet may be added if necessary to conform with said requirements.

(a) CORNER LOCATION: Plane Coordinates
 Cor. of Secs. 1, 6, 12 & 7 X:
 Township 38 North Y:
 Range 6 & 7 East of the 4th P.M. Datum:
 Town of Hazelhurst County of Oneida



(b) HISTORY OF ORIGINAL CORNER ESTABLISHMENT

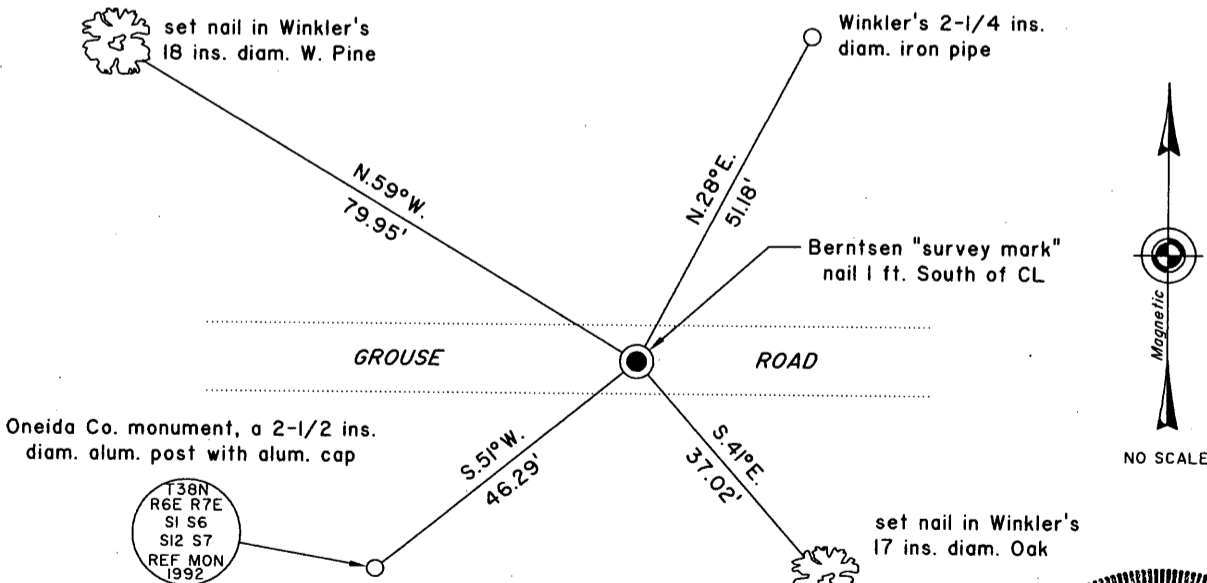
Original Surveyor: Millard, Alfred Original Accessories:
 Date of Survey: Commenced Sept. 1860 Maple 6" S.39°E., 15 lks.
 Completed Sept. 1860 Aspen 18" S.46°W., 10 lks.
 W. Pine 6" N.37°W., 18 lks.
 W. Pine 6" N.76°E., 26 lks.

(b) (f) (g) (h) Description of monument found at this corner and if it was accepted, state all evidence (material, testimonial, occupational, plats, records, other monuments) used as a basis for accepting. If not accepted or if nothing was found, state evidence used as basis for establishing location. If re-established through lost corner proportionate methods, indicate all monuments, distances and directions used to establish. Indicate type of monument and sign post found or set.

5 Apr. 1993: USPLS Monument Record prepared by Charles E. Winkler and filed in the office of the Oneida County Register of Deeds. Found 1-3/4 in. diam. iron pipe based on previously perpetuated location.

20 July 2004: As a result of recent road construction, I set a Berntsen "survey mark" nail in new pavement using Winkler's accessories as shown below. I found a white plastic sign post adjacent to the Oneida County aluminum reference monument.

(c) (d) (e) Plan view of corner with ties to at least 4 witness monuments. If in disagreement with previously established corner, show the distances between the two corners and also indicate the ties to the disputed.



(i) I, Jeffrey W. Austin, Registered Land Surveyor No. S-1885, hereby certify upon honor that the corner location on this record was determined by me or under my direction and control and that this U.S. Public Land Survey Monument Record is correct and complete to the best of my knowledge and belief.

Signature _____ Date 11 FEB 2005



3806010000

INDEX NO. E-25