

# U.S. PUBLIC LAND SURVEY MONUMENT RECORD

Note: This form is intended and designed to fulfill all requirements of Wisconsin Administrative Code, Chapter A-E 5.02, U.S. Public Land Survey Monument Record (3) (a) (b) (c) (d) (e) (f) (g) (h) (i). An additional sheet may be added if necessary to conform with said requirements.

(a) Corner location: Township 38 North

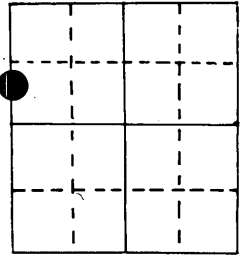
Range 7 East ~~10~~

Town/ ~~City/Village~~ Lake Tomahawk

County Oneida

3/4" iron pipe

Wit.  
S.M.C.



Section 6

(b) (f) (g) (h) Description of monument found at this corner and if it was accepted, state all evidence (material, testimonial, occupational, plats, records, other monuments) used as a basis for accepting. If not accepted or if nothing was found, state evidence used as basis for establishing location. If reestablished through lost corner proportionate methods, indicate all monuments, distances and directions used to establish.

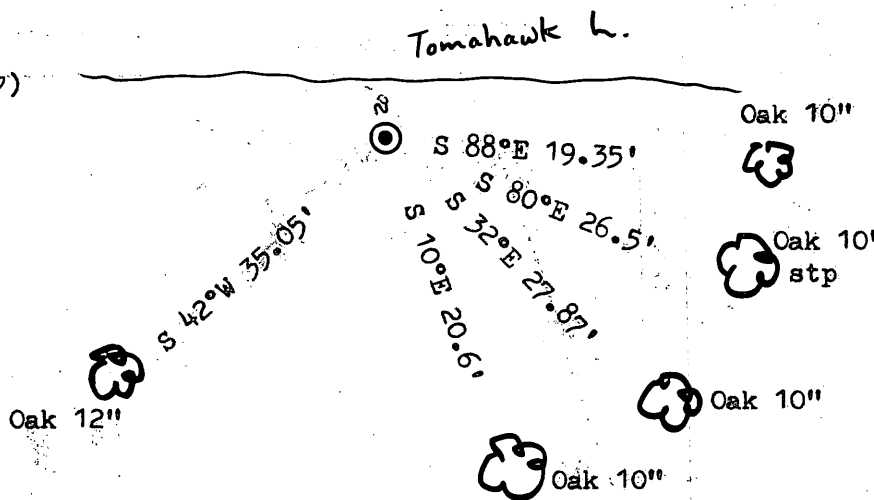
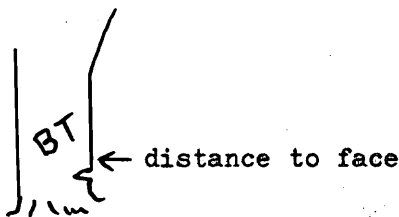
Original Alex Anderson Sept 1860. OBT's PY 20" S 62°E 25 lks, PY 24" S 70°W 22 lks at 8.00 ch north of 1/4 cor.

W. Hennig in Jan 1947 found two stps. badly rotted which closely fit Gov't. bearings & distances for M.C., cor. falls in lake. Set witness post for M.C. at 24' south of orig. and 480' north of 1/4 cor. Bearing from 1/4 cor. thru witness to orig. M.C. is N 3°19' W. Made BT'S Oak 6" S 77°E 26.3'  
Oak 4" S 18°E 20.6'

I found 3/4" iron pipe & Hennig's BT's. BT distance is good but S 18°E is S 10°E. Made two more BT's.

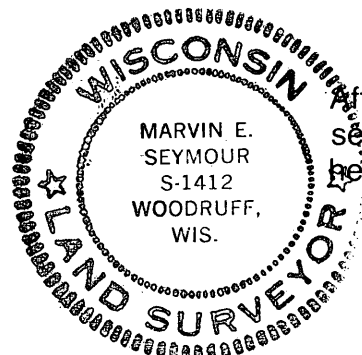
(c) (d) (e) Plan view of corner with ties to at least 4 witness monuments. If in disagreement with previously established corner, show the distances between the two corners and also indicate the ties to the disputed corner.

S.M.C. Witness to N.M.C. (Sec. 30, 39-7)  
is N 1°18'52"W 8562.55'  
(bearing base may not match 39-7)



(i) I, Marvin E. Seymour  
(type or print name) certify that the corner location on this record was determined by me or under my direction and control and that this U.S. Public Land Survey Monument Record is correct and complete to the best of my knowledge and belief.

Marvin E. Seymour April 26, 1984  
Signature Date



3806012200

B-1

REGISTER OF DEEDS OFFICE  
ONEIDA COUNTY, WIS.

**FILED**  
DEC 12 1984

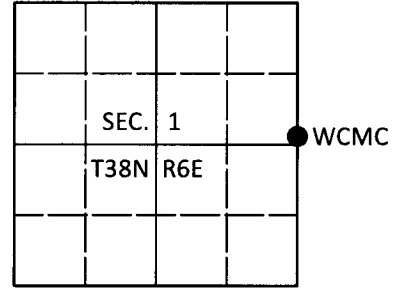
At *9:00* O'clock *a* M  
DORIS VERAGE KUEHN  
REGISTER OF DEEDS

# U.S. PUBLIC LAND SURVEY MONUMENT RECORD

Note: This form is intended and designed to fulfill all requirements of Wisconsin Administrative Code, Chapter A-E 7.08 U.S. Public Land Survey Monument Record (3)(a-i).

(a) CORNER LOCATION  
 Wit. Meander Cor. of Secs. 1 & 6  
 Township 38 North  
 Range 6 & 7 East of the 4th P.M.  
 Town of Hazelhurst/Lake Tomahawk  
 County of Oneida

WISCORS - Oneida County  
 N: 228,841.31 USft  
 E: 197,148.62 USft  
 Datum: NAD 83(2011)  
 GNSS Method: RTN - Direct  
 GNSS Control: WISCORS VRS



(b) HISTORY OF ORIGINAL CORNER ESTABLISHMENT

Original Surveyor: \_\_\_\_\_ Original Accessories: \_\_\_\_\_  
 Date of Survey Commenced: \_\_\_\_\_ See previous USPLS Monument Record  
 Completed: \_\_\_\_\_

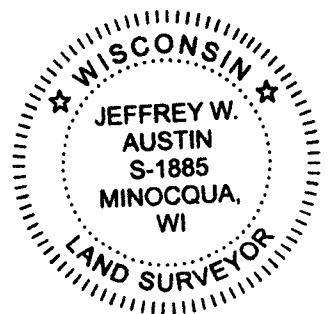
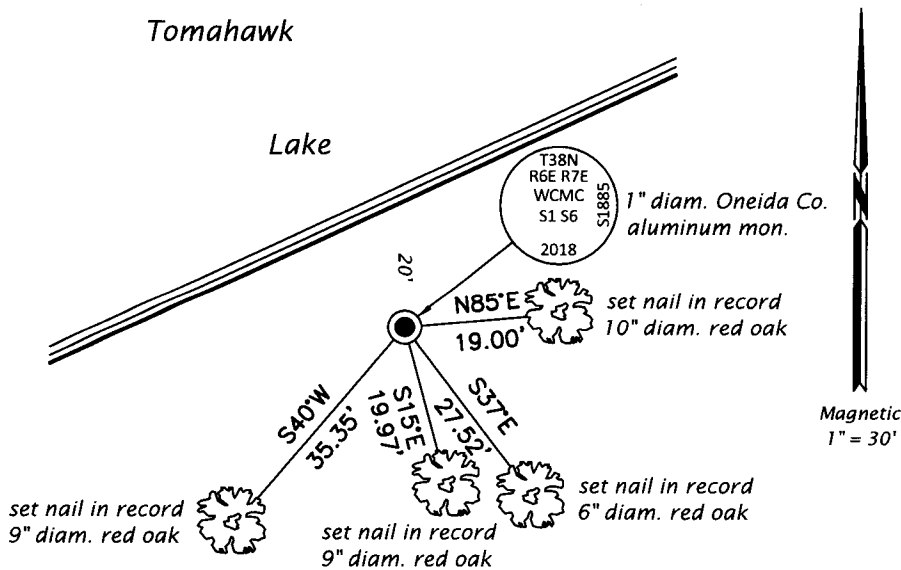
(b)(f)(g)(h) Description of monument found at this corner and if it was accepted, state all evidence (material, testimonial, occupational, plats, records, other monuments) used as a basis for accepting. If not accepted or if nothing was found, state evidence used as basis for establishing location. If re-established through lost corner proportionate methods, indicate all monuments, distances and directions used to establish. Indicate type of monument and sign post found or set.

*This is a perpetuation of a previous USPLS Monument Record by Marvin E. Seymour, RLS dated April 26, 1984 and filed in the office of the Oneida County Register of Deeds. A complete history of the corner can be found on the previous monument record. I accept the previous location as a true and faithful perpetuation or reestablishment of the original corner location and further perpetuate it as follows.*

*March 3, 2018: I found and accepted the record monument, a 1-1/4" diam., 34" long iron pipe. In place of the pipe, I set a 1" diam., 30" long aluminum pipe with a 2-1/2" diam. Oneida Co. aluminum cap flush with the ground surface. I found or established accessories as shown below and set a white vinyl sign post bearing Northwest, 0.3 ft. dist.*

*The coordinate value shown has been verified by at least one of the following methods: 1) comparison to a previously GPS determined published value; 2) the value is the average of two or more GPS observations at a markedly different time; 3) one or more distances were measured back to the GPS observed corner from temporary GPS observed offset locations.*

(c)(d)(e) Plan view of corner with ties to at least 4 witness monuments. If in disagreement with previously established corner, show the distances between the two corners and also indicate the ties to the disputed.



REGISTER OF DEEDS OFFICE  
 ONEIDA COUNTY  
 FILED

MAR 15 2018

KYLE J. FRANSON  
 REGISTER OF DEEDS

(i) I, Jeffrey W. Austin, Professional Land Surveyor No. S-1885, hereby certify that the corner location on this record was determined by me or under my direction and control and that this U.S. Public Land Survey Monument Record is correct and complete to the best of my knowledge and belief.

\_\_\_\_\_  
 Signature Date 11 MAR 2018