

State of Wisconsin

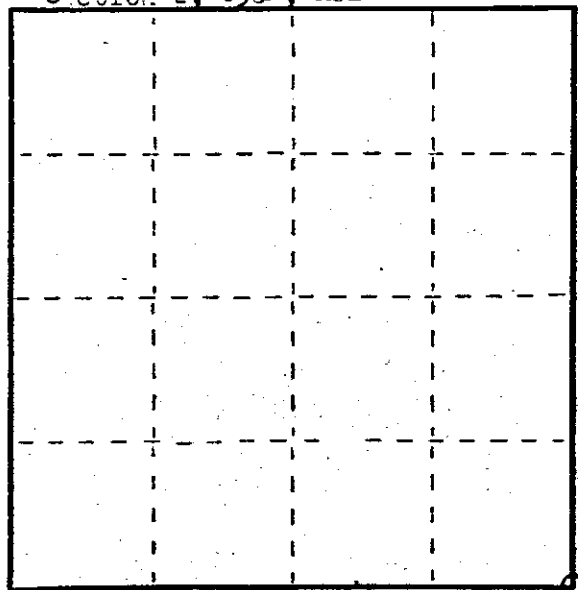
County of Oneida } ss.

I, James D. Rein, do hereby certify that on the 19th day of January, 1979, I found evidence of the Southeast corner of Section 2 Township 38, North, Range 6 East, Fourth Principal Meridian, as described hereon; and that from this evidence I established a new monument and accessories as described hereon to perpetuate the original location of this corner.

Resident witnesses:

None

Section 2, T38N, R6E



○ = Corner monument restored.

CERTIFIED LAND CORNER RESTORATION

Index No. E-21

History of original corner establishment: Wood post set by Alexander Anderson, Deputy Surveyor, on September 29th, 1863, witnessed by the following bearing trees: 12" Birch N50°E, 14 links (9.24 feet); 12" Aspen, S50°E, 32 links (21.12 feet).

Corner located by E.F. Dorr, Oneida County Surveyor on June 12th, 1893

Corner is legend on Northwest's Surveyors, Inc. map by John H. Fisher dated 13th of February 1975, as a 1" iron pipe found, witnessed by the following bearing trees: 14" Oak, S76°E, 26.3 feet; 8" Oak, N71°E, 16.8 feet; 11" Oak, S6°N, 30.7 feet.

Description of corner evidence found:

1" inside diameter iron pipe up 1-1/2 feet and scribed 2-1/2" x 1/2" post marked "X", witnessed by the following bearing trees:

- 14" Oak bearing S74°-53'E, 26.20 feet;
- 9" Oak bearing N73°-45'E, 16.80 feet; (scribed 16.80 feet)
- 11" Oak bearing S0°-27'W, 30.56 feet; (scribed 30.1 feet)

Description of monument and accessories I established to perpetuate the original location of this corner.

Made ties to the existing iron pipe as follows:

*This is a copy of original post mark.*

- Set P.K. nail in existing 14" Oak, S74°-53'E, 26.20 feet;
- Set P.K. nail in existing 9" Oak, N73°-45'E, 16.80 feet;
- Set P.K. nail in existing 11" Oak, S 9°-27'W, 30.56 feet.

Dated at Minocqua, Wis., this 12th day of March, 1979

Signature James D. Rein Title Registered Land Surveyor Registration No. S-1234  
(County Surveyor, Registered Land Surveyor, or other duly authorized official)

Office of Register of Deeds, County of Oneida, I hereby certify that the within instrument was filed in this office for record on the \_\_\_\_\_ day of \_\_\_\_\_, 19\_\_\_\_ at \_\_\_\_\_ o'clock \_\_\_\_\_ M.

(Register of Deeds)

By \_\_\_\_\_ Deputy

REGISTER OF DEEDS OFFICE  
ONEIDA COUNTY, WIS.  
JAN 18 1979  
At \_\_\_\_\_ o'clock  
DORIS VERABE KUEHN  
FORM REGISTER OF DEEDS

3806020000

# U.S. PUBLIC LAND SURVEY MONUMENT RECORD

REGISTER OF DEEDS OFFICE  
ONEIDA COUNTY  
FILED

FEB 10 2020

Note: This form is intended and designed to fulfill all requirements of the Wisconsin Administrative Code, Chapter A-E 7.08 U.S. Public Land Monument Record (3)(a)(b)(c)(d)(e)(f)(g)(h)(i). An additional sheet may be added if necessary to conform with said requirements.

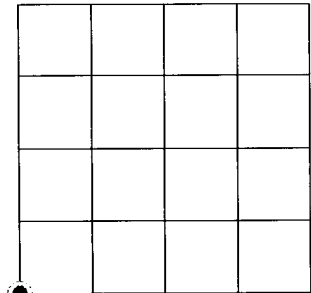
KYLE J. FRANSON  
REGISTER OF DEEDS

(a) CORNER LOCATION: WISCRS - Oneida County  
 SW corner of Section 1  
 Township 38 North  
 Range 6 East  
 Town of Hazelhurst  
 County of Oneida

North:  
 East:  
 Datum:  
 GNSS Method:  
 GNSS Control:

(RECORDING AREA)

SECTION 1



(b) HISTORY OF ORIGINAL CORNER ESTABLISHMENT

Original Surveyor:  
 Date of Survey: Commenced  
 Completed  
 Original B.T.'S

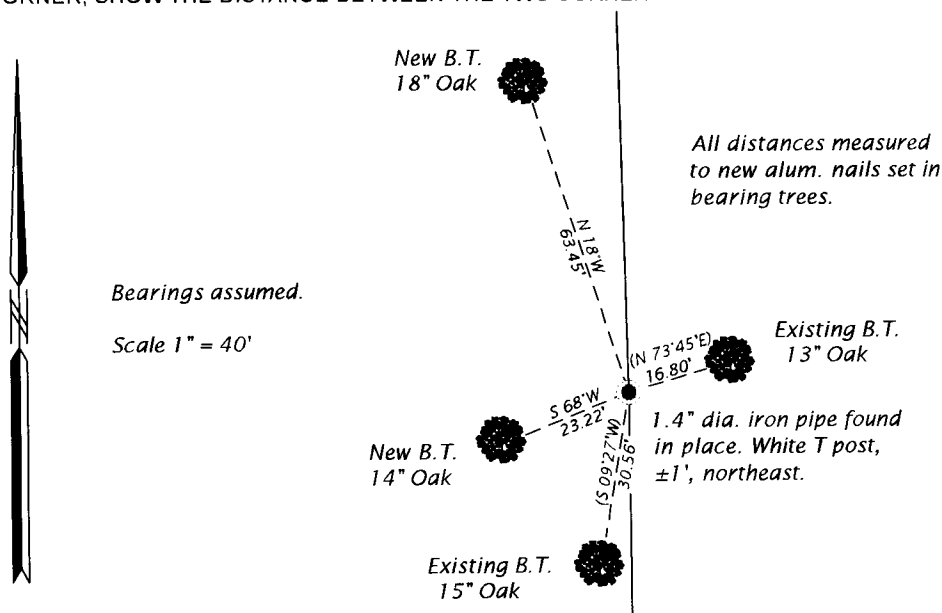
SEE PREVIOUS U.S.P.L.S. MONUMENT  
 RECORD DATED 3/12/79.

(f)(g)(h) DESCRIPTION OF MONUMENT FOUND AT THIS CORNER AND IF IT WAS ACCEPTED, STATE ALL EVIDENCE (MATERIAL, TESTIMONIAL, OCCUPATIONAL, PLATS, RECORD, OTHER MONUMENTS) USED AS A BASIS FOR ESTABLISHING LOCATION. IF NOT ACCEPTED OR IF NOTHING WAS FOUND, STATE EVIDENCE USED AS BASIS FOR ESTABLISHING LOCATION. IF REESTABLISHED THROUGH LOST CORNER PROPORTIONATE METHODS, INDICATE ALL MONUMENTS, DISTANCES AND DIRECTIONS USED TO ESTABLISH. INDICATE TYPE OF MONUMENT AND SIGN POST FOUND OR SET.

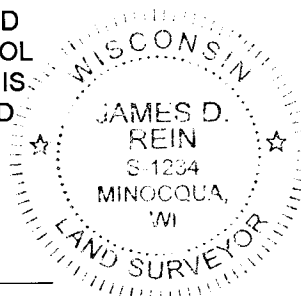
This is a perpetuation of a previous U.S.P.L.S. Monument Record by James D. Rein, RLS-1234, dated 3/12/1979, and filed in the office of the Oneida County Register of Deeds. A complete history of the corner can be found on the previous monument record. I accept the previous location as a true and faithful perpetuation or reestablishment of the original corner location and further perpetuate it as follows.

July 17, 2019 - James D. Rein, PLS No. 1234, we found a 1.4" outside dia. iron pipe up 11" and reference bt's associated with corner as shown on my prior U.S.P.L.S. monument record described above. We perpetuated the corner by establishing two additional bearing trees as shown in plan. The prior Oak bearing S74° 53'E, 26.20' is now gone.

(c)(d)(e) PLAN VIEW OF CORNER WITH TIES TO AT LEAST 4 WITNESS MONUMENTS. IF IN DISAGREEMENT WITH PREVIOUSLY ESTABLISHED CORNER, SHOW THE DISTANCE BETWEEN THE TWO CORNERS AND ALSO INDICATE THE TIES TO THE DISPUTED CORNER.



(i) I, JAMES D. REIN, PROFESSIONAL LAND SURVEYOR NO. S-1234 HEREBY CERTIFY THAT THE CORNER LOCATION ON THIS RECORD WAS DETERMINED BY ME OR UNDER MY DIRECTION AND CONTROL AND THAT THIS U.S. PUBLIC LAND SURVEY MONUMENT RECORD IS CORRECT AND COMPLETE TO THE BEST OF MY KNOWLEDGE AND BELIEF.



*James D. Rein*  
 SIGNATURE

12-22-19  
 DATE

INDEX NO. E-21  
 3806020000