

CERTIFIED LAND CORNER RESTORATION

Index No. E-19-20

State of Wisconsin

County of Oneida } ss.

I, James D. Rein, do hereby certify that on the 18th day of January, 19 79, I found evidence of the South Meander corner of Section 2 Township 38, North, Range 5 East, Fourth Principal Meridian, as described hereon; and that from this evidence I established a new monument and accessories as described hereon to perpetuate the original location of this corner.

Resident witnesses:  
None

History of original corner establishment: Wood post set by Alexander Anderson, Deputy Surveyor on September 29th, 1863, witnessed by the following bearing trees: 8" Yellow Pine N62-1/2°E, 40 links (26.40 feet); 8" Yellow Pine, S69-1/2°E, 42 links (27.72 feet).  
Corner is legend on Northwoods Surveyors, Inc. map by John H. Fisher, dated 13th of February, 1975 as a 1" diameter iron pipe.

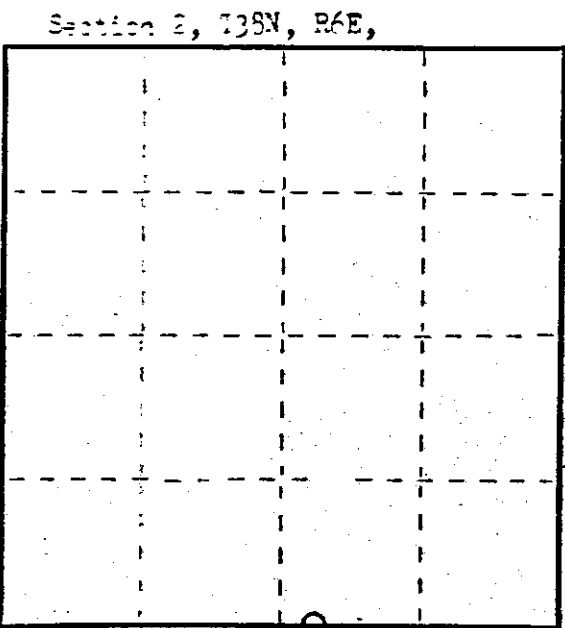
Description of corner evidence found:  
1" diameter iron pipe up 1-1/2 feet, 15 feet more or less from the high water mark of Katherine Lake.

Description of monument and accessories I established to perpetuate the original location of this corner.

Made ties to the existing iron pipe as follows:

- Set P.N. nail in scribed 7" White Birch, N 7°-29'W, 15.55 feet
- Set P.N. nail in scribed 6" White Birch, N57°-03'E, 32.53 feet
- Set P.N. nail in scribed 6" Norway Pine, S 4°-10'E, 4.31 feet

This is a copy of original land map



○ = Corner monument restored.

Dated at Minocqua, Wis., this 12th day of March, 19 79

Signature James D. Rein Title Registered Land Surveyor Registration No. S-1234  
(County Surveyor, Registered Land Surveyor, or other duly authorized official)

Office of Register of Deeds, County of Oneida. I hereby certify that the within instrument was filed in this office for record on the \_\_\_\_\_ day of \_\_\_\_\_, 19 \_\_\_\_\_ at \_\_\_\_\_ o'clock \_\_\_\_\_ M.

\_\_\_\_\_  
(Register of Deeds)  
By \_\_\_\_\_ Deputy

REGISTER OF DEEDS OFFICE  
ONEIDA COUNTY, WIS.  
JAN 13 1979  
AL FORM 993 OCTOBER 1968  
DORIS VERARE KUEHN  
REGISTER OF DEEDS

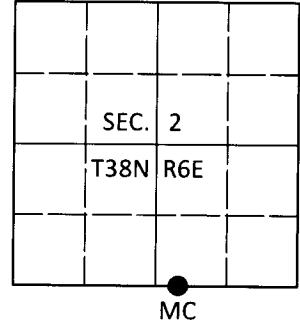
3806020017

# U.S. PUBLIC LAND SURVEY MONUMENT RECORD

Note: This form is intended and designed to fulfill all requirements of Wisconsin Administrative Code, Chapter A-E 7.08 U.S. Public Land Survey Monument Record (3)(a-i).

(a) CORNER LOCATION  
 Meander Cor. of Secs. 2 & 11  
 Township 38 North  
 Range 6 East of the 4th P.M.  
 Town of Hazelhurst  
 County of Oneida

WISCRS - Oneida County  
 N: 225,651.50 USft  
 E: 189,602.55 USft  
 Datum: NAD 83(2011)  
 GNSS Method: RTN - Offset  
 GNSS Control: WISCORS VRS



(b) HISTORY OF ORIGINAL CORNER ESTABLISHMENT

Original Surveyor:

Original Accessories:

Date of Survey      Commenced:  
    Completed:

See previous USPLS Monument Record

(b)(f)(g)(h) Description of monument found at this corner and if it was accepted, state all evidence (material, testimonial, occupational, plats, records, other monuments) used as a basis for accepting. If not accepted or if nothing was found, state evidence used as basis for establishing location. If re-established through lost corner proportionate methods, indicate all monuments, distances and directions used to establish. Indicate type of monument and sign post found or set.

*This is a perpetuation of a previous USPLS Monument Record by James D. Rein, RLS dated Mar. 12, 1979 and filed in the office of the Oneida County Register of Deeds. A complete history of the corner can be found on the previous monument record. I accept the previous location as a true and faithful perpetuation or reestablishment of the original corner location and further perpetuate it as follows.*

*Dec. 20, 2018: I found and accepted the record monument, a 2-1/2" diam. aluminum pipe with a 3-1/4" diam. Oneida Co. aluminum cap projecting 2" above the ground surface. This monument was evidently set in 2010 by Wilderness Surveying (WSI), but there is no monument record in the county files. I found or established accessories as shown below. I found a white vinyl sign post bearing North, 1.5 ft.*

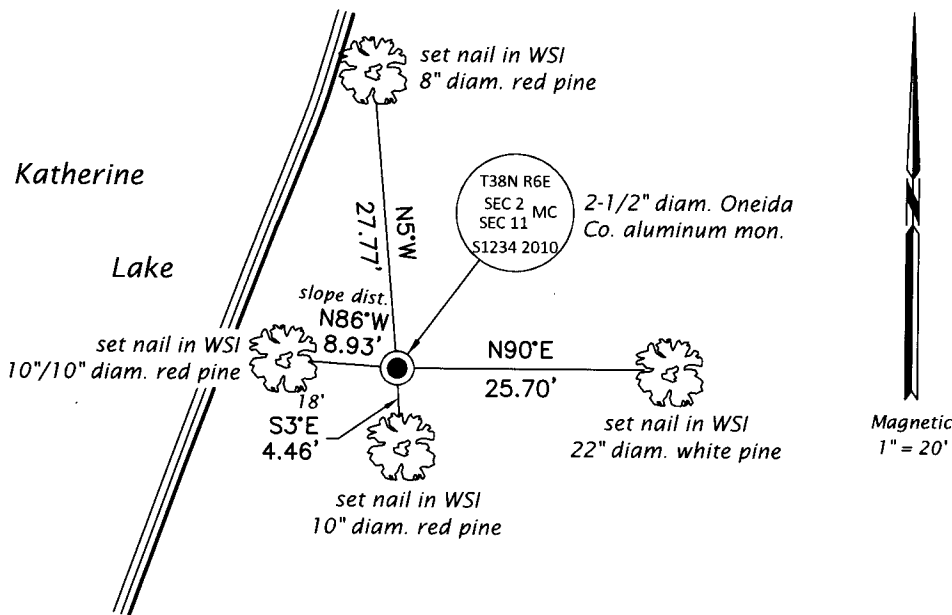
*The coordinate value shown has been verified by at least one of the following methods: 1) comparison to a previously GPS determined published value; 2) the value is the average of two or more GPS observations at a markedly different time; 3) one or more distances were measured back to the GPS observed corner from temporary GPS observed offset locations.*

REGISTER OF DEEDS OFFICE  
 ONEIDA COUNTY  
 FILED

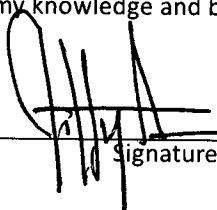
DEC 31 2018

KYLE J. FRANSON  
 REGISTER OF DEEDS

(c)(d)(e) Plan view of corner with ties to at least 4 witness monuments. If in disagreement with previously established corner, show the distances between the two corners and also indicate the ties to the disputed.



(i) I, Jeffrey W. Austin, Professional Land Surveyor No. S-1885, hereby certify that the corner location on this record was determined by me or under my direction and control and that this U.S. Public Land Survey Monument Record is correct and complete to the best of my knowledge and belief.

  
 Signature

24 DEC 2018  
 Date