

CERTIFIED LAND CORNER RESTORATION

Index No. C-21

State of Wisconsin

County of Oneida } ss.

I, James D. Rein, do hereby certify that on the 17th day of January, 1979, I found evidence of the east one-quarter corner of Section 2 Township 38 North, Range 6 East, Fourth Principal Meridian, as described hereon; and that from this evidence I established a new monument and accessories as described hereon to perpetuate the original location of this corner.

Resident witnesses:

None

History of original corner establishment:

Wood post set by Alexander Anderson, Deputy Surveyor, on September 29th, 1863, witnessed by the following bearing trees: 8" Yellow Pine, S63°E, 4 links (2.64 feet); 9" Maple S47°W, 1 1/4 links (9.24 feet).

Corner located by B. F. Dorr, Oneida County Surveyor on June 12th, 1893.

Corner is legend as a 1-1/4" iron pipe on Fisher, Inman, Foltz map by Stuart L. Foltz dated October 23rd, 1975.

Description of corner evidence found:

1" inside diameter iron pipe up 1 foot. Pipe is located approximately 12 feet West of an electric power line and 64 feet west of centerline of Sylvan Shore Drive.

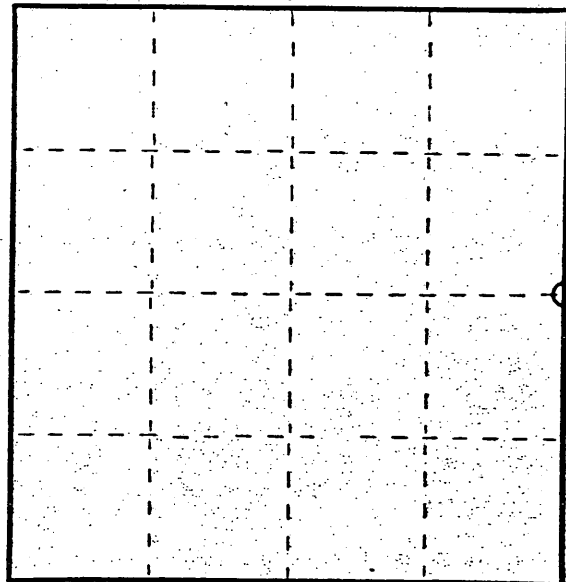
Description of monument and accessories I established to perpetuate the original location of this corner.

Made the following ties to the existing iron pipe:

This is a copy. original lost mqr

- Set P.K. nail in scribed 12" Oak, S20°-03'E, 33.65 feet
- Set P.K. nail in scribed 0" Oak, S73°-33'W, 15.67 feet
- Set P.K. nail in scribed 9" Oak, N40°-32'W, 36.63 feet
- Set P.K. nail in Power Pole No.6, 3806 - 143 N49°-02'E, 15.39 feet.

Section 2, T38N, R6E



○ = Corner monument restored.

Dated at Minocqua, Wis., this 12th day of March, 1979

Signature James D Rein Title Registered Land Surveyor Registration No. S-1234
(County Surveyor, Registered Land Surveyor, or other duly authorized official)

Office of Register of Deeds, County of Oneida, I hereby certify that the within instrument was filed in this office for record on the _____ day of _____, 19____ at _____ o'clock _____ M.

(Register of Deeds)

By _____ Deputy

REGISTER OF DEEDS OFFICE
ONEIDA COUNTY, WIS.

JAN 18 1980

At _____ o'clock _____ M
FOR DEPOSIT, VERABE KUEHN

3806022000

U.S. PUBLIC LAND SURVEY MONUMENT RECORD

REGISTER OF DEEDS OFFICE
ONEIDA COUNTY
FILED

FEB 10 2020

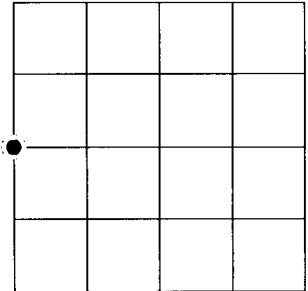
Note: This form is intended and designed to fulfill all requirements of the Wisconsin Administrative Code, Chapter A-E 7.08 U.S. Public Land Monument Record (3)(a)(b)(c)(d)(e)(f)(g)(h)(i). An additional sheet may be added if necessary to conform with said requirements.

NOBLE J. FRANKSON
REGISTER OF DEEDS

(a) CORNER LOCATION: WISCRS - Oneida County
 W1/4 corner of Section 1 North:
 Township 38 North East:
 Range 6 East Datum:
 Town of Hazelhurst GNSS Method:
 County of Oneida GNSS Control:

(RECORDING AREA)

SECTION 1



(b) HISTORY OF ORIGINAL CORNER ESTABLISHMENT

Original Surveyor:
 Date of Survey: Commenced
 Completed
 Original B.T.'S

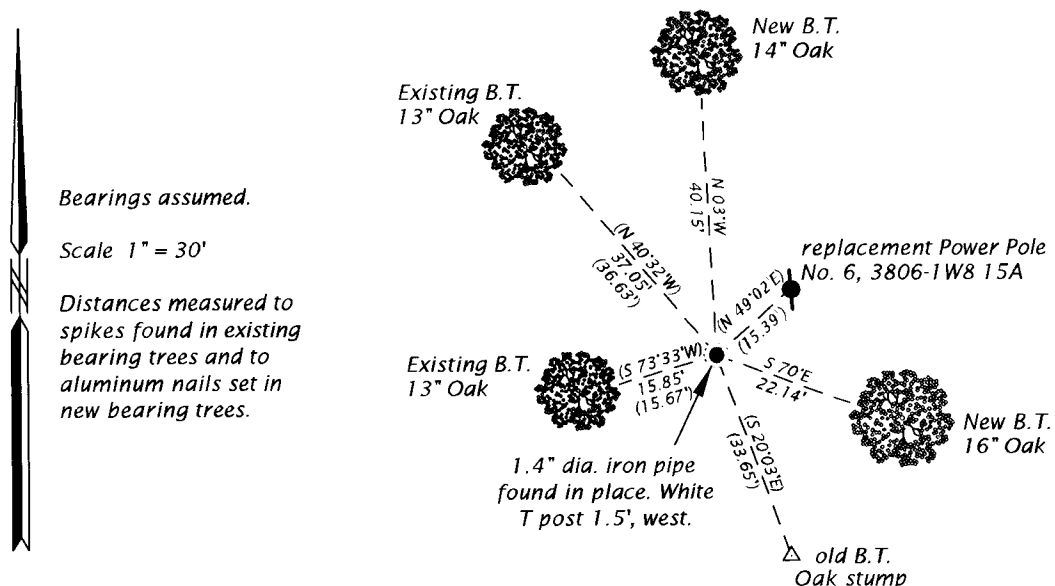
SEE PREVIOUS U.S.P.L.S. MONUMENT
 RECORD DATED 3/12/79.

(f)(g)(h) DESCRIPTION OF MONUMENT FOUND AT THIS CORNER AND IF IT WAS ACCEPTED, STATE ALL EVIDENCE (MATERIAL, TESTIMONIAL, OCCUPATIONAL, PLATS, RECORD, OTHER MONUMENTS) USED AS A BASIS FOR ESTABLISHING LOCATION. IF NOT ACCEPTED OR IF NOTHING WAS FOUND, STATE EVIDENCE USED AS BASIS FOR ESTABLISHING LOCATION. IF REESTABLISHED THROUGH LOST CORNER PROPORTIONATE METHODS, INDICATE ALL MONUMENTS, DISTANCES AND DIRECTIONS USED TO ESTABLISH. INDICATE TYPE OF MONUMENT AND SIGN POST FOUND OR SET.

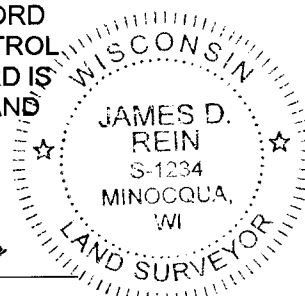
This is a perpetuation of a previous U.S.P.L.S. Monument Record by James D. Rein, RLS-1234, dated 3/12/1979, and filed in the office of the Oneida County Register of Deeds. A complete history of the corner can be found on the previous monument record. I accept the previous location as a true and faithful perpetuation or reestablishment of the original corner location and further perpetuate it as follows.

July 17, 2019 - James D. Rein, PLS No. 1234, we found a 1.4" outside dia. iron pipe and the reference bt's associated with corner as shown on my prior U.S.P.L.S. monument record described above. We perpetuated the corner by establishing two additional bearing trees and a new tie to a replacement power pole.

(c)(d)(e) PLAN VIEW OF CORNER WITH TIES TO AT LEAST 4 WITNESS MONUMENTS. IF IN DISAGREEMENT WITH PREVIOUSLY ESTABLISHED CORNER, SHOW THE DISTANCE BETWEEN THE TWO CORNERS AND ALSO INDICATE THE TIES TO THE DISPUTED CORNER.



(i) I, JAMES D. REIN, PROFESSIONAL LAND SURVEYOR NO. S-1234 HEREBY CERTIFY THAT THE CORNER LOCATION ON THIS RECORD WAS DETERMINED BY ME OR UNDER MY DIRECTION AND CONTROL AND THAT THIS U.S. PUBLIC LAND SURVEY MONUMENT RECORD IS CORRECT AND COMPLETE TO THE BEST OF MY KNOWLEDGE AND BELIEF.



James D. Rein
 SIGNATURE DATE 12-22-19

INDEX NO. C-21
 3806022000