

REGISTER OF DEEDS OFFICE
ONEIDA COUNTY, WIS.
FILED
AUG 19 2003
At _____ M
THOMAS H. LEIGHTON
REGISTER OF DEEDS
Recorders Data

This form is intended to fulfill the requirements of Chapter A-E7.08 (3)(a) thru (i) U.S. Public Land Survey Monument Location Record, Wisconsin Administrative Code. Use the reverse side of form for continuation.

U.S. PUBLIC LAND SURVEY MONUMENT LOCATION RECORD

USPLS CORNER: WEST WIT MC SECTION: 10 TOWNSHIP: 38 NORTH RANGE: 6 EAST
 NAME OF WATERWAY FOR M.C. CORNER : KATHERINE LAKE SECTION LINE: NORTH
 (CITY)(VILLAGE)(TOWN) OF: HAZELHURST COUNTY OF: ONEIDA

Description of monument found or placed and all other evidence used as the basis for monument location; including monuments and measurements required if the corner location was reestablished by lost corner proportionate methods. Also indicate name of the original surveyor, original survey date and the corner monument, bearing trees, witness or other reference monuments established, including measured bearing and distance ties, from available survey records.

Found and accepted an old rusty 1.5" dia. iron pipe with broken off top 5" below grade at this corner location; I carefully pulled the old 15" long iron pipe with crimped bottom end and drove a standard 2" dia. by 30" long aluminum pipe monument with cast aluminum point and stamped Oneida County cap flush into plumb soil cavity left by the old iron pipe below existing grade on sandy bank, 10 feet West of existing lakeshore bearing N05°E this date.

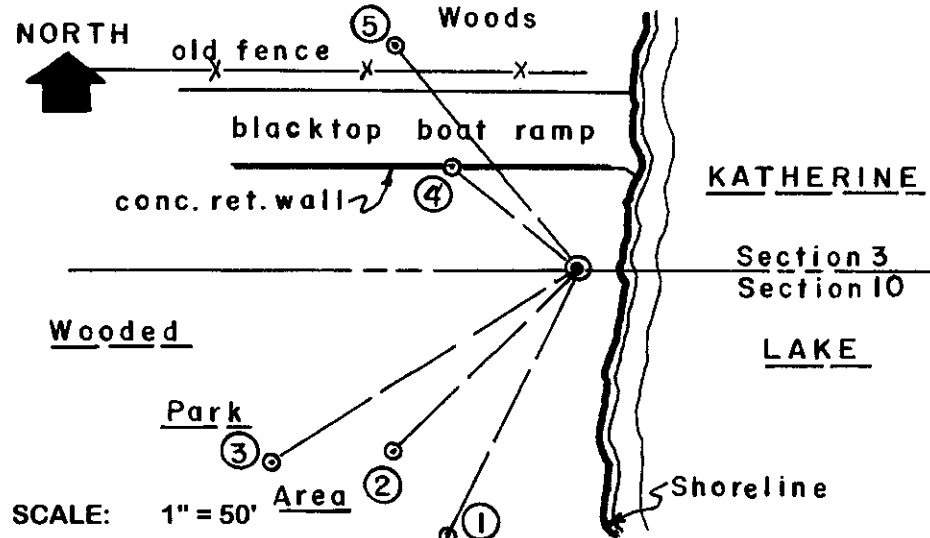
In September/October 1863, Alexander Anderson/GLO set a wood post as the original corner and noted OBTs: an 8" Mr N67°W 23 links and an 8" Bw S53.5°W 36 links; all now obliterated.

In 1957, E.F. Kowalke/RLS 403 notes a wood post and iron pipe at this corner per Plat of Survey filed as A-773 in Oneida County survey records; and also noted a 14" Pw BT S60°W 35.2', now gone in improved park area, and that iron pipe found was 10' from lake and 50 feet South of an old East/West fenceline; remnants thereof found this date.

In 1973, John B. Margitan/RLS 1017 notes this meander corner as an iron pipe and BTs: a 7" Pw N60°W 31.8', now gone; and a 10" Willow N25°W 14.3', found OK as a 22" Willow N17°W 14.1 feet to face of probable lower face blaze overgrowth.

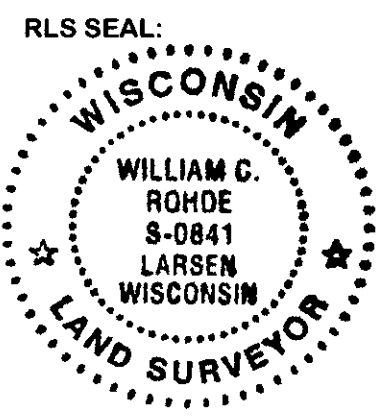
This corner recovered May 27, 2003; there were no direct witnesses other than an occasional launching of boats at an improved boat ramp North of the corner. No standard white poly 'T' marker post was set nearby as it would fall on beach.

Plan view map of monument location with bearing and distance ties to a minimum of four(4) described witness or reference monuments of concrete, natural stone, iron, live bearing trees or equivalent material. If applicable, also show a minimum of two(2) bearing and distance ties to any other monument found and not accepted; including the bearing and distance from the accepted monument.



- WITNESS MONUMENT TIES:**
- ① New 9" Pr BT S27°W 82.09'.
 - ② New 13" Pw BT S45°W 67.85'.
 - ③ New 19" Pw BT S57°W 94.00' to PK/W in lower left face..
 - ④ Orange paint keeled SE corner of upper 12" concrete retaining wall at juncture with lower 12" retaining wall along South edge of 20' wide blacktop boat ramp, N50°W 41.72'.
 - ⑤ New 7" Pw BT N40°W 75.04'.

Unless otherwise indicated, all bearing tree ties are to a .25" dia. by 2.5" long PK nail with a 1.25" dia. steel washer driven into unblazed right face and a .25" dia. by 2.5" long PK nail with a 2" dia. steel washer stamped BT is also driven into unblazed face of bearing tree at DBH; the basis for measured bearings is by compass to nearest degree and all tie distances are measured horizontal by steel tape corrected to nearest 1/100th feet at standard temperature of 68° F.



LAND SURVEYOR CERTIFICATE:
 I, William C. Rohde, hereby certify that I am duly licensed as a Professional Land Surveyor in the State of Wisconsin; that this USPLS monument location was determined by me and/or under my direct supervision and control; and that this U.S. Public Land Survey Monument Location Record is true and correct to the best of my knowledge and belief.

Signed: *William C. Rohde*
 William C. Rohde RLS 841

