

CERTIFIED LAND CORNER RESTORATION

Index No. B-C 17

State of Wisconsin

County of Oneida

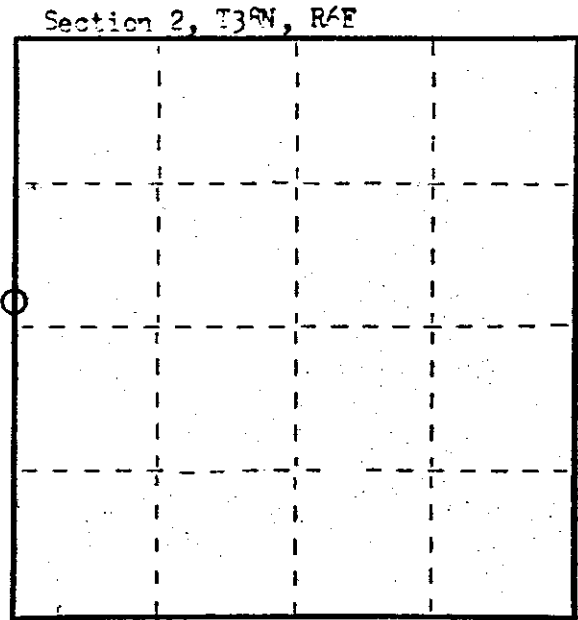
ss.

I, James D. Rein, do hereby certify that on the 19th day of January, 1979, I found evidence of the west meander corner of Section 2 Township 38 North, Range 6 East, Fourth Principal Meridian, as described hereon; and that from this evidence I established a new monument and accessories as described hereon to perpetuate the original location of this corner.

Resident witnesses:

None

REGISTER OF DEEDS OFFICE ONEIDA COUNTY, WIS. JAN 18 1979 At 8:05 O'clock A.M. FORBES, MESSING & KILPATRICK



○ = Corner monument restored.

History of original corner establishment:

Wood post set by Alexander Anderson on September 29th, 1863, witnessed by the following bearing trees: 10" Yellow Pine, N10°E, 12 links (7.92 feet); 1 1/2" Yellow Pine, N22°W, 80 links (52.80 feet)

Recorded as 2" x 2 1/2" iron pipe in Recorded plat of Sylvan Shores

Map in Government Lot 6, Section 2, T38N, R6E by William S. Cameron dated March, 1961 legends the corner as being on iron pipe.

Description of corner evidence found: Crimped 1" diameter iron pipe painted blue up 1/2 foot, 8 feet more or less from the high water mark of Katherine Lake.

Description of monument and accessories I established to perpetuate the original location of this corner.

Make ties to the existing iron pipe as follows:

This is a copy of original plat map

- Set P.K. nail in 1 1/2" White Pine, N27°-52'W, 7.55 feet
Set P.K. nail in 10" White Pine, N22°-15'E, 20.90 feet
Set P.K. nail in 7" White Pine, N75°-14'E, 31.78 feet

Dated at Minocqua Wis., this 12th day of March 1979

Signature James D. Rein Title Registered Land Surveyor Registration No. S-1234 (County Surveyor, Registered Land Surveyor, or other duly authorized official)

Office of Register of Deeds, County of Oneida, I hereby certify that the within instrument was filed in this office for record on the day of at o'clock M.

(Register of Deeds)

By Deputy

001209083

# U.S. PUBLIC LAND SURVEY MONUMENT RECORD

REGISTER OF DEEDS OFFICE  
ONEIDA COUNTY  
FILED

Note: This form is intended and designed to fulfill all requirements of the Wisconsin Administrative Code, Chapter A-E 7.08 U.S. Public Land Monument Record (3)(a)(b)(c)(d)(e)(f)(g)(h)(i). An additional sheet may be added if necessary to conform with said requirements.

JUL 19 2021

KYLE J. FRANSON  
REGISTER OF DEEDS

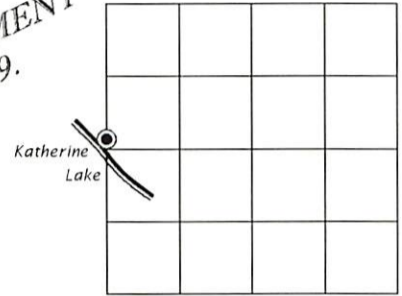
(a) CORNER LOCATION:

Meander Corner of Section 2  
Township 38 North  
Range 6 East  
Town Hazelhurst  
County of Oneida

North:  
East:  
Datum:  
GNSS Method:  
GNSS Control:

(RECORDING AREA)

SECTION 2



(b) HISTORY OF ORIGINAL CORNER ESTABLISHMENT

Original Surveyor:  
Date of Survey: Commenced  
Completed  
Original B.T.'S

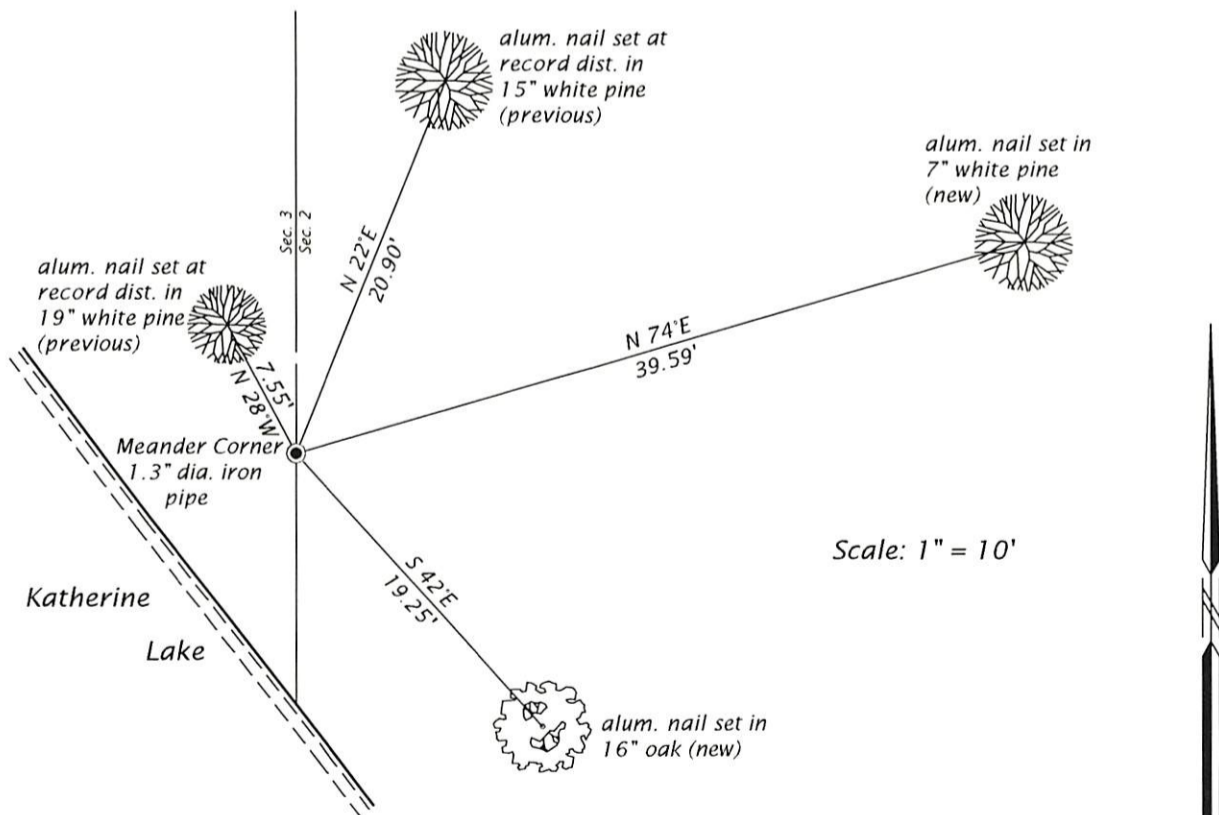
SEE PREVIOUS U.S.P.L.S. MONUMENT  
RECORD DATED MARCH 12, 1979.

(f)(g)(h) DESCRIPTION OF MONUMENT FOUND AT THIS CORNER AND IF IT WAS ACCEPTED, STATE ALL EVIDENCE (MATERIAL, TESTIMONIAL, OCCUPATIONAL, PLATS, RECORD, OTHER MONUMENTS) USED AS A BASIS FOR ESTABLISHING LOCATION. IF NOT ACCEPTED OR IF NOTHING WAS FOUND, STATE EVIDENCE USED AS BASIS FOR ESTABLISHING LOCATION. IF REESTABLISHED THROUGH LOST CORNER PROPORTIONATE METHODS, INDICATE ALL MONUMENTS, DISTANCES AND DIRECTIONS USED TO ESTABLISH. INDICATE TYPE OF MONUMENT AND SIGN POST FOUND OR SET.

This is a perpetuation of a previous U.S.P.L.S. Monument Record by James D. Rein, RLS, dated March 12, 1979, and filed in the office of the Oneida County Register of Deeds. A complete history of the corner can be found on the previous monument record. I accept the previous location as a true and faithful perpetuation or reestablishment of the original corner location and further perpetuate it as follows.

July 12, 2021, we found, and I accepted the crimped 1.3" dia. iron pipe shown on my previous monument record from 1979. One of the previous northeasterly white pine bt.s is now gone. Due to the location of the corner, we did not set a guard post. See below for updated witnesses.

(c)(d)(e) PLAN VIEW OF CORNER WITH TIES TO AT LEAST 4 WITNESS MONUMENTS. IF IN DISAGREEMENT WITH PREVIOUSLY ESTABLISHED CORNER, SHOW THE DISTANCE BETWEEN THE TWO CORNERS AND ALSO INDICATE THE TIES TO THE DISPUTED CORNER.



(i) I, JAMES D. REIN, PROFESSIONAL LAND SURVEYOR NO. S-1234 HEREBY CERTIFY THAT THE CORNER LOCATION ON THIS RECORD WAS DETERMINED BY ME OR UNDER MY DIRECTION AND CONTROL AND THAT THIS U.S. PUBLIC LAND SURVEY MONUMENT RECORD IS CORRECT AND COMPLETE TO THE BEST OF MY KNOWLEDGE AND BELIEF.



*James D. Rein*

7-14-21

SIGNATURE

DATE

INDEX NO. B - C 17  
3806032100