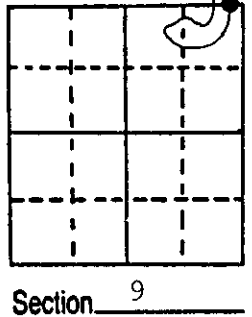


# U.S. PUBLIC LAND SURVEY MONUMENT RECORD

**Note:** This form is intended and designed to fulfill all requirements of Wisconsin Administrative Code, Chapter A-E 5.02, U.S. Public Land Survey Monument Record (3) (a) (b) (c) (d) (e) (f) (g) (h) (i). An additional sheet may be added if necessary to conform with said requirements.

(a) Corner location: Township 38 North  
 Range 6 East/West  
 Town/City/Village Hazelhurst  
 County Oneida

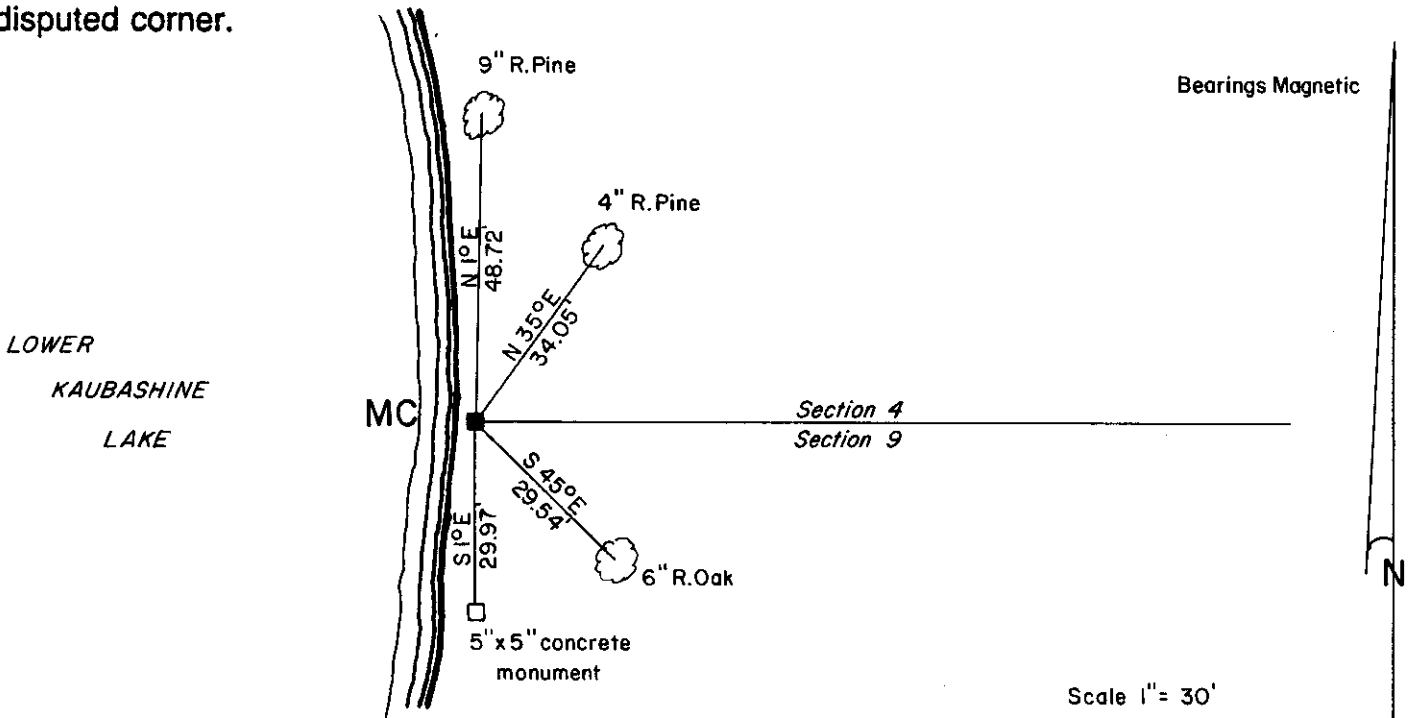
REGISTER OF DEEDS OFFICE  
 ONEIDA COUNTY, WIS.  
**FILED**  
 JAN 30 1987  
 At 8:00 O'Clock A  
**DORIS VERABE KUEHN**  
 REGISTER OF DEEDS



(b) (f) (g) (h) Description of monument found at this corner and if it was accepted, state all evidence (material, testimonial, occupational, plats, records, other monuments) used as a basis for accepting. If not accepted or if nothing was found, state evidence used as basis for establishing location. If reestablished through lost corner proportionate methods, indicate all monuments, distances and directions used to establish.

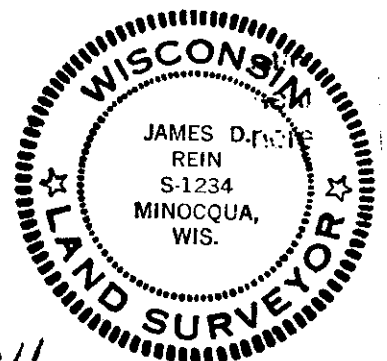
September - October 1863 - Alexander Anderson, Deputy Surveyor - Set Meander Post.  
 B.T.'s - W. Pine 16", N42°E, 8 links and W. Pine 20", S11°E, 41 links.  
 August 1932 - Alex Deleglise, Surveyor - Set concrete monument for M.C. while surveying for the Plat of Bwena Vista.  
 December 26, 1986 - James D. Rein, Surveyor - Found 4" x 4" concrete monument projecting 3" above ground, 3 feet from the shore of Lower Kaubashine Lake. Existing 5" x 5" concrete monument bears S1°E, 29.97 feet. Made 3 bearing trees as shown. Measured to aluminum nails set in center of root crown on side of trees.

(c) (d) (e) Plan view of corner with ties to at least 4 witness monuments. If in disagreement with previously established corner, show the distances between the two corners and also indicate the ties to the disputed corner.



(i) I, James D. Rein, Registered Land Surveyor No. S-1234  
 (type or print name) certify that the corner location on this record was determined by me or under my direction and control and that this U.S. Public Land Survey Monument Record is correct and complete to the best of my knowledge and belief.

James D. Rein Signature      12/26/86 Date



Index No. E-12-13

3806040011

