

U.S. PUBLIC LAND SURVEY MONUMENT RECORD

JUN 01 2017

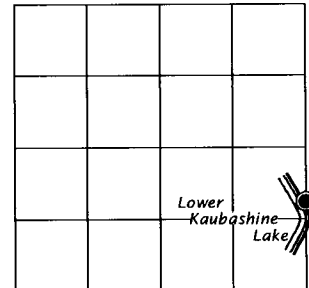
Note: This form is intended and designed to fulfill all requirements of the Wisconsin Administrative Code, Chapter A-E 7.08 U.S. Public Land Monument Record (3)(a)(b)(c)(d)(e)(f)(g)(h)(i). An additional sheet may be added if necessary to conform with said requirements.

AT _____ O'CLOCK _____ M
KYLE J. FRANSON
REGISTER OF DEEDS

(a) CORNER LOCATION: WISCORS - Oneida County
N. Witness Meander Corner of Section 4
Township 38 North
Range 6 East
Town of Hazelhurst
County of Oneida
North: 227233.000 USft
East: 180996.175 USft
Latitude: 45° 48' 32.67437" N
Longitude: 89° 44' 11.72492" W
Datum: NAD 83(2011)
GNSS Method: Static - Direct
GNSS Control: WISCORS VRS
Record North: 227233.119 USft
Record East: 180996.153 USft
Record Datum: NAD 83(1991)

(RECORDING AREA)

SECTION 4



(b) HISTORY OF ORIGINAL CORNER ESTABLISHMENT

Original Surveyor: Alexander Anderson
Date of Survey: Commenced September 28th, 1863
Completed October 5th, 1863
Original B.T.'S: Birch 5" N 64°E, 15 lks.
Tamarack 8" N 19-3/4°W 92 lks.

(f)(g)(h) DESCRIPTION OF MONUMENT FOUND AT THIS CORNER AND IF IT WAS ACCEPTED, STATE ALL EVIDENCE (MATERIAL, TESTIMONIAL, OCCUPATIONAL, PLATS, RECORD, OTHER MONUMENTS) USED AS A BASIS FOR ESTABLISHING LOCATION. IF NOT ACCEPTED OR IF NOTHING WAS FOUND, STATE EVIDENCE USED AS BASIS FOR ESTABLISHING LOCATION. IF REESTABLISHED THROUGH LOST CORNER PROPORTIONATE METHODS, INDICATE ALL MONUMENTS, DISTANCES AND DIRECTIONS USED TO ESTABLISH. INDICATE TYPE OF MONUMENT AND SIGN POST FOUND OR SET.

May 10, 1902 - D. H. Vaughan, County Surveyor (Old Field Book 3, pages 147-149 and Dorr-Vaughan Book, page 55), survey in Section 3, T38N, R6E, recovered original bt's and set iron pipe for post and iron pipe at each original bt., M.C. is in lake about 10 links.

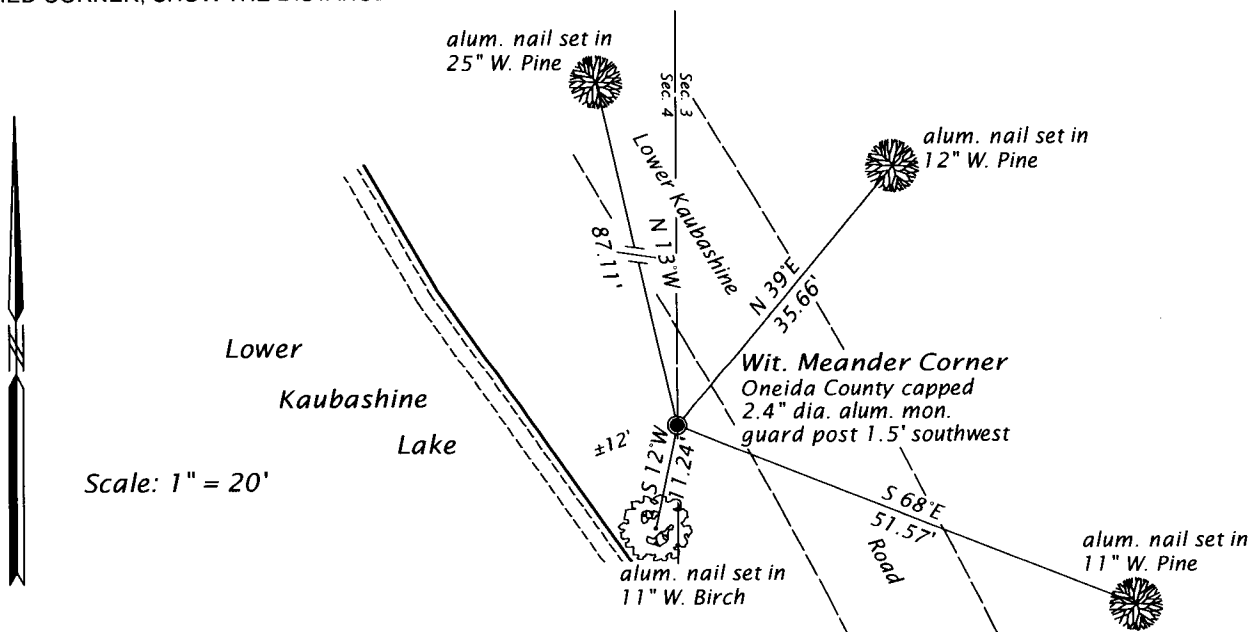
October 21, 1940 - Ray H. Hall, Surveyor CCC Camp 75-S (CCC Book 8, pages 8 and 9) lake survey in Section 3, T38N, R6E, chaining north from SW corner Section 3, @ 1385 feet, opposite cement mon. on shore @ 1616 feet, opposite logical point for north M.C.

August 12, 1948 - F. R. Wincentsen, Deputy County Surveyor (Wincentsen Book, pages 172 and 173 and also map of survey filed as C199 in county surveyor's office) for a survey in Section 3, T38N, R6E, describes this corner monumented by a 6" x 6" concrete monument, located 1279.0 feet south of the West 1/4 corner.

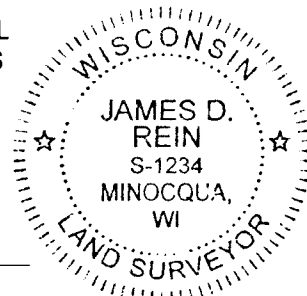
(CONTINUED ON REVERSE PAGE)

The coordinate value shown has been verified by at least one of the following methods: 1) comparison to a previously GPS determined published value; 2) the value is the average of two or more GPS observations at a markedly different time; 3) one or more distances were measured back to the GPS observed corner from temporary GPS observed offset locations.

(c)(d)(e) PLAN VIEW OF CORNER WITH TIES TO AT LEAST 4 WITNESS MONUMENTS. IF IN DISAGREEMENT WITH PREVIOUSLY ESTABLISHED CORNER, SHOW THE DISTANCE BETWEEN THE TWO CORNERS AND ALSO INDICATE THE TIES TO THE DISPUTED CORNER.



(i) I, JAMES D. REIN, PROFESSIONAL LAND SURVEYOR NO. S-1234 HEREBY CERTIFY THAT THE CORNER LOCATION ON THIS RECORD WAS DETERMINED BY ME OR UNDER MY DIRECTION AND CONTROL AND THAT THIS U.S. PUBLIC LAND SURVEY MONUMENT RECORD IS CORRECT AND COMPLETE TO THE BEST OF MY KNOWLEDGE AND BELIEF.



[Handwritten Signature]
SIGNATURE

5-24-17
DATE

INDEX NO. CD - 13
3806041100

(CONTINUED FROM REVERSE PAGE)

October - November, 1948 - Walter A. Hennig, Surveyor, (Hennig Field Book 7, pages 26 through 32 and map filed in county surveyor's office as C2241) describes "Witness Corner - (Orig. MC in lake) concrete mon., spike in W. Pine 26" N55°E, 2.8 feet.

March 8, 2000 - James L. Rein, RLS No. 2335, Wilderness Surveying, Inc. (Map No. 99-203, filed as B4444 in the county surveyor's office) for a survey in Section 4, T38N, R6E, determined the witness corner to the meander corner "obliterated" and reset an Oneida County capped 2.4" dia. x 30" long aluminum monument, based on the Hennig's field note traverse ties.

December 28, 2016 - James D. Rein, PLS No. 1234, we recovered an Oneida County capped 2.4" dia. aluminum monument, buried 7" and located 5 feet southwest of the road pavement. I accept this monument as a perpetuation of a witness corner to the original meander corner, and we made reference ties as shown in the plan.