

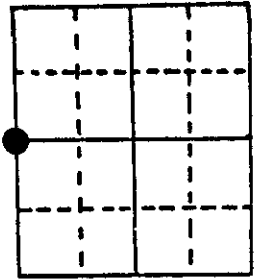
U.S. PUBLIC LAND SURVEY MONUMENT RECORD

Note: This form is intended and designed to fulfill all requirements of Wisconsin Administrative Code, Chapter A-E 5.02, U.S. Public Land Survey Monument Record (3) (a) (b) (c) (d) (e) (f) (g) (h) (i). An additional sheet may be added if necessary to conform with said requirements.

(a) Corner location: Township 38 North
 Range 6 East/West

Town/City/Village Hazelhurst

County Oneida



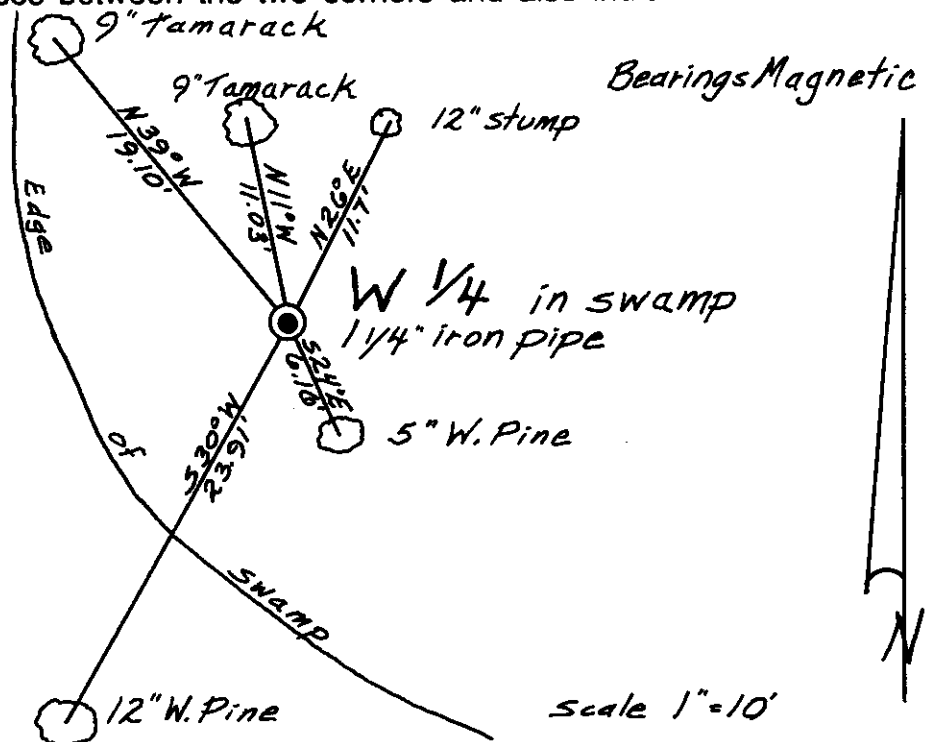
Section 3

(b) (f) (g) (h) Description of monument found at this corner and if it was accepted, state all evidence (material, testimonial, occupational, plats, records, other monuments) used as a basis for accepting. If not accepted or if nothing was found, state evidence used as basis for establishing location. If reestablished through lost corner proportionate methods, indicate all monuments, distances and directions used to establish.

- September 1863 - Alexander Anderson, Deputy Surveyor - Set quarter section post.
 B.T.s: Tamarack 12", S31°E, 11 links. Aspen 7", N84°W, 2 links
- May 10, 1902 - D. H. Vaughan, Surveyor - found original W $\frac{1}{4}$ post and trees. Made new Tamarack 10", N25 $\frac{1}{2}$ °E, 17 $\frac{3}{4}$ links (11.7 ft.)
- October 25, 1948 - Walter A. Hennig, Surveyor - found iron pipe and concrete monument. *
 Made new bearing trees: W. Pine 3", S22°E, 6.1'. Tamarack 5", N40°W, 18.9'
- October, 1952 - R. F. Wincentzen - found W $\frac{1}{4}$ corner Sec. 3, iron well point. Vaughans B.T. Tamarack 10", N25°30'E, 11.8 feet.
- June 18, 1986 - James D. Rein, Surveyor - found 1 $\frac{1}{4}$ " iron pipe projecting 16 inches above ground. Square scribed post 1 foot SW. Old broken concrete monument \pm 1 foot north. Vaughans Tamarack stump N26°E, 11.7 feet. Hennigs W. Pine, now 5", S24°E, 6.16 feet and Tamarack, now 9", N39°W, 19.10 feet. Another Tamarack 9", N11°W, 11.03 feet. Made new 12" W. Pine S30°W, 23.91 feet. Distances measured to aluminum nails set in center of root crown on side of trees.

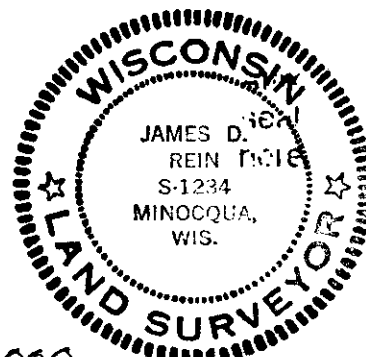
*Stump of original Tamarack S31°E, 11 links. Vaughan's Tamarack stub N25°E, 17 $\frac{3}{4}$ links.

(c) (d) (e) Plan view of corner with ties to at least 4 witness monuments. If in disagreement with previously established corner, show the distances between the two corners and also indicate the ties to the disputed corner.



(i) I, James D. Rein, Registered Land Surveyor No. S-1234
 (type or print name) certify that the corner location on this record was determined by me or under my direction and control and that this U.S. Public Land Survey Monument Record is correct and complete to the best of my knowledge and belief.

James D. Rein 6/18/86
 Signature Date



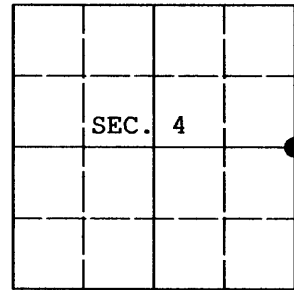
Index No. C-13

3806042000

U.S. PUBLIC LAND SURVEY MONUMENT RECORD

Note: This form is intended and designed to fulfill all requirements of Wisconsin Administrative Code, Chapter A-E 7.08 U.S. Public Land Survey Monument Record (3) (a) (b) (c) (d) (e) (f) (g) (h) (i). An additional sheet may be added if necessary to conform with said requirements.

(a) CORNER LOCATION: Plane Coordinates
 1/4 Cor. of Secs. 3 & 4 X: 181018.868 USft
 Township 38 North Y: 228289.455 USft
 Range 6 East of the 4th P.M. Datum: NAD 83/91 Oneida Co.
 Town of Hazelhurst County of Oneida



(b) HISTORY OF ORIGINAL CORNER ESTABLISHMENT

Original Surveyor: Alexander Anderson Original Accessories:
 Date of Survey: Commenced Sept. 1863 tamarack 12" S.31°E., 11 lks.
 Completed Oct. 1863 aspen 7" N.84°W., 2 lks.

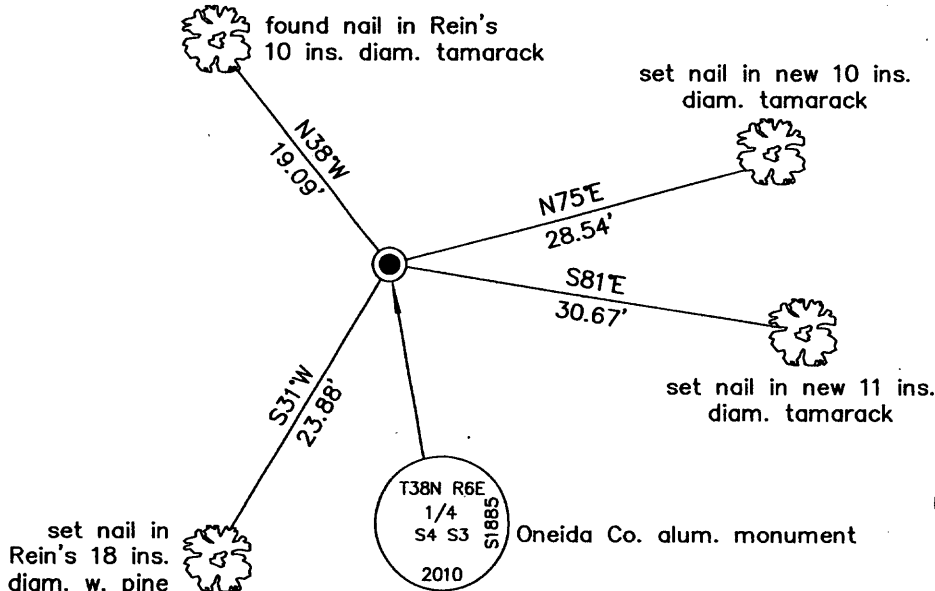
(b) (f) (g) (h) Description of monument found at this corner and if it was accepted, state all evidence (material, testimonial, occupational, plats, records, other monuments) used as a basis for accepting. If not accepted or if nothing was found, state evidence used as basis for establishing location. If re-established through lost corner proportionate methods, indicate all monuments, distances and directions used to establish. Indicate type of monument and sign post found or set.

NOTE: This is a perpetuation of a previous USPLS Monument Record by James D. Rein, RLS dated June 18, 1986 and filed in the office of the Oneida County Register of Deeds. A complete history of the corner can be found on the previous monument record. I accept the previous location as a true and faithful perpetuation or reestablishment of the original corner location and further perpetuate it as follows.

October 20, 2010: I found and accepted Rein's monument, a 60 ins. long, 1-3/4 ins. diam. iron pipe with old wood post adjacent. I found Rein's SE pine standing dead and his N11°W tamarack down. I replaced the pipe with a 60 ins. long, 2-1/2 ins. diam. aluminum post with Oneida Co. aluminum cap projecting 12 ins. above the bog and marked as shown below. I found or established accessories as shown below and found a white plastic sign post bearing West, 1 ft. dist.

The coordinates shown were derived from a conventional traverse to the Aero-Metric offset points set in Clawson Drive, northwest of the corner. The southerly offset point was a decayed PK nail that I replaced with a cotton picker spindle.

(c) (d) (e) Plan view of corner with ties to at least 4 witness monuments. If in disagreement with previously established corner, show the distances between the two corners and also indicate the ties to the disputed.



REGISTER OF DEEDS OFFICE
 ONEIDA COUNTY, WIS.
 DEC 13 2010
 At O'Clock
 THOMAS H. LEIGHTON
 REGISTER OF DEEDS



(i) I, Jeffrey W. Austin, Registered Land Surveyor No. S-1885, hereby certify upon honor that the corner location on this record was determined by me or under my direction and control and that this U.S. Public Land Survey Monument Record is correct and complete to the best of my knowledge and belief.

Signature: *[Handwritten Signature]* Date: Oct. 25, 2010