

At _____ O'Clock _____ M
THOMAS H. LEIGHTON
REGISTER OF DEEDS

Recorders Data

This form is intended to fulfill the requirements of Chapter A-E7.08 (3)(a) thru (i) U.S. Public Land Survey Monument Location Record, Wisconsin Administrative Code. Use the reverse side of form for continuation.

U.S. PUBLIC LAND SURVEY MONUMENT LOCATION RECORD

USPLS CORNER: NORTH WITNESS MC SECTION: 4 TOWNSHIP: 38 NORTH RANGE: 06 EAST

NAME OF WATERWAY FOR M.C. CORNER: LOWER KAUBASHINE LAKE SECTION LINE: WEST

~~(CITY)(VILLAGE)(TOWN)~~ OF: HAZELHURST COUNTY OF: ONEIDA

Description of monument found or placed and all other evidence used as the basis for monument location; including monuments and measurements required if the corner location was reestablished by lost corner proportionate methods. Also indicate name of the original surveyor, original survey date and the corner monument, bearing trees, witness or other reference monuments established, including measured bearing and distance ties, from available survey records.

By reference to original survey field notes by Alexander Anderson/GLO in September/October 1863, no MC post was set as the west line of Section 4 was along existing lakeshore upland at the time.

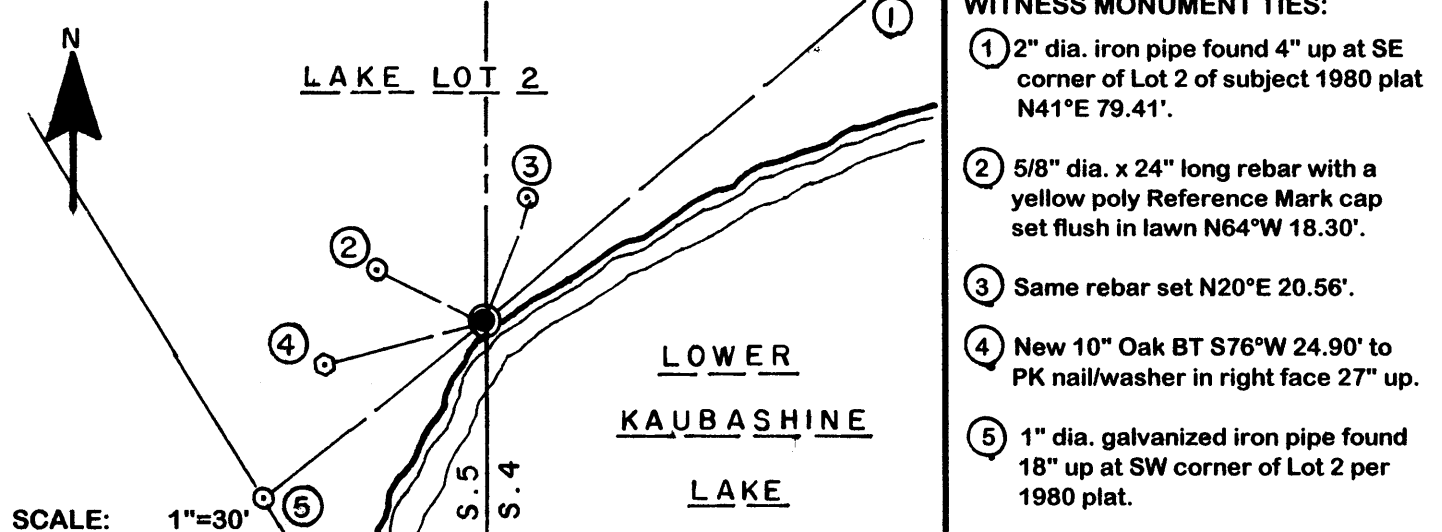
In October 1950, Forrest Wincentsen/RLS 155 found a 6"x6" concrete monument on the North shore of Lower Kaubashine Lake per his map and notes on Pages 174 and 175 of Wincentsen's Book 1 in Oneida County survey records, which he also noted as having been previously set by V.M. Maine in October of 1941.

In May 1980, John H. Fisher/RLS 836 indicates a 6" square concrete monument found as this Witness MC, per legend on his Tranquility Acres Plat filed in Oneida County records, on the lake frontage of Lot 2 of said plat, also being at Fire No. 10293 Lower Kaubashine Road.

On August 9, 2006 I also found the old 6" square concrete monument at the rocky shoreline of the lake bearing N60°E+/- and tipped to the SE, undoubtedly from lake ice. While replumbing and securing the monument for new ties, I found the upper 18" of the monument broken off the bottom 18" of the monument below grade, so I replaced, plumbed and secured it for new ties shown below and further referenced on the reverse of this record.

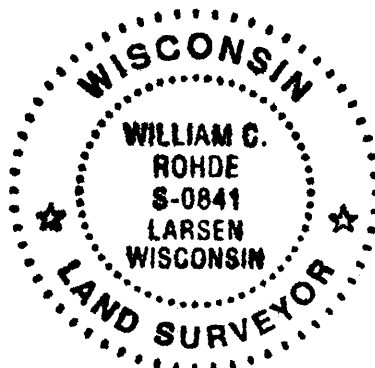
No standard white poly 'T' marker post was set nearby in lake lot lawn area. There were no direct witnesses.

Plan view map of monument location with bearing and distance ties to a minimum of four(4) described witness or reference monuments of concrete, natural stone, iron, live bearing trees or equivalent material. If applicable, also show a minimum of two(2) bearing and distance ties to any other monument found and not accepted; including the bearing and distance from the accepted monument.



Unless otherwise indicated, all bearing tree ties are to a .25" dia. by 2.5" long PK nail with a 1.25" dia. steel washer driven into unblazed right face and a .25" dia. by 2.5" long PK nail with a 2" dia. steel washer stamped BT is also driven into unblazed face of bearing tree at DBH; the basis for measured bearings is by compass to nearest degree and all tie distances are measured horizontal by steel tape corrected to nearest 1/100th feet at standard temperature of 68° F.

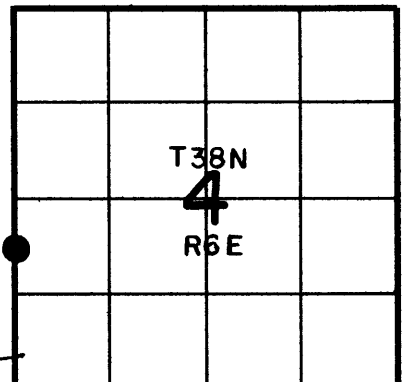
RLS SEAL:



LAND SURVEYOR CERTIFICATE:

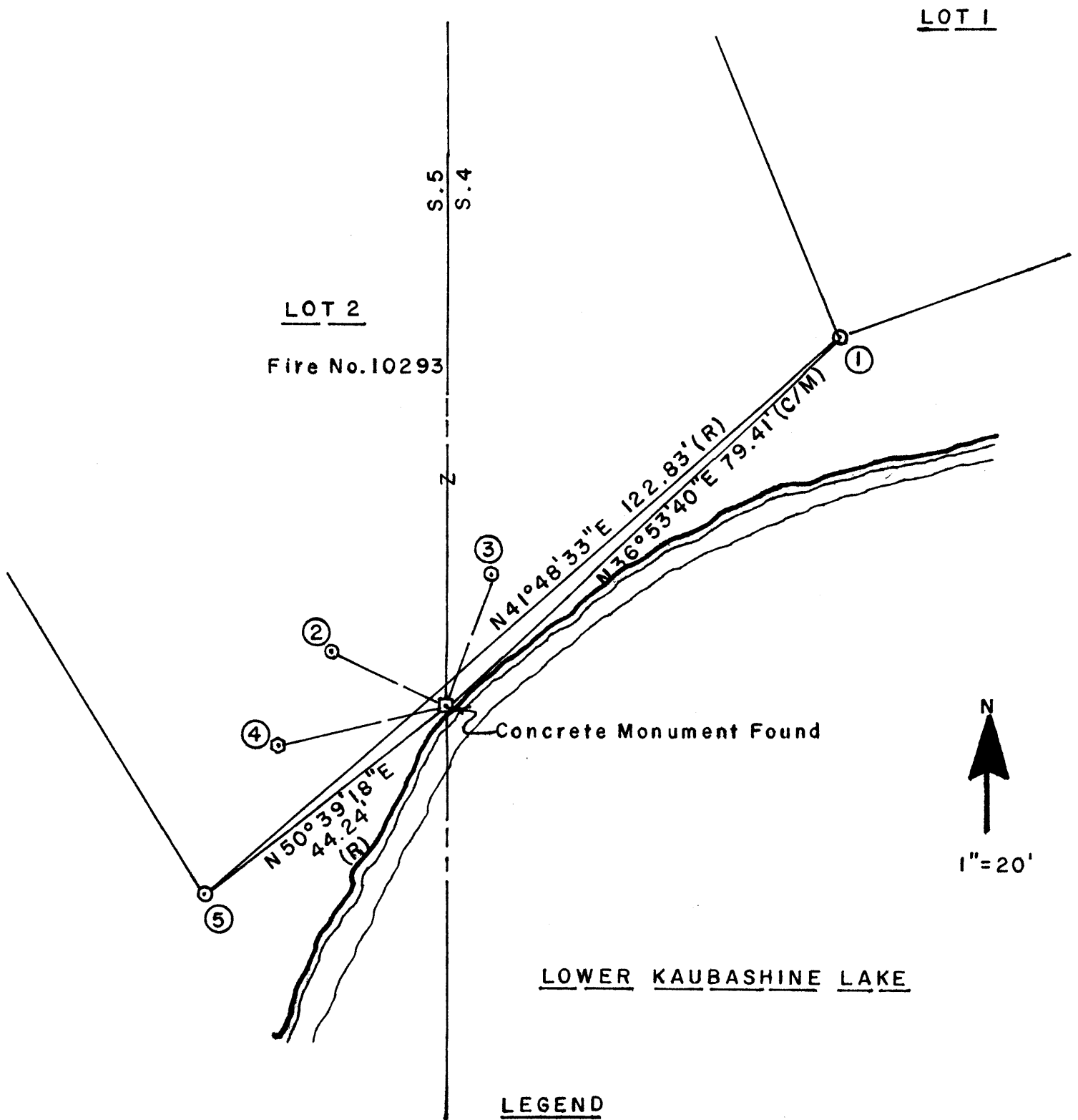
I, William C. Rohde, hereby certify that I am duly licensed as a Professional Land Surveyor in the State of Wisconsin; that this USPLS monument location was determined by me and/or under my direct supervision and control; and that this U.S. Public Land Survey Monument Location Record is true and correct to the best of my knowledge and belief.

Signed: *William C. Rohde*
William C. Rohde RLS 841



SECTION LOCATION MAP

INDEX NO. C-D 9
3806 051600



LEGEND

(R) Recorded

(C/M) Computed/Measured