

# U.S. PUBLIC LAND SURVEY MONUMENT RECORD

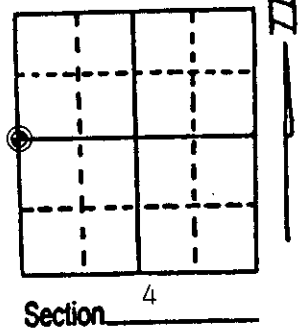
**Note:** This form is intended and designed to fulfill all requirements of Wisconsin Administrative Code, Chapter A-E 7.08 U.S. Public Land Survey Monument Record (3) (a) (b) (c) (d) (e) (f) (g) (h) (i). An additional sheet may be added if necessary to conform with said requirements.

(a) Corner location: Township 38 North

Range 6 East/West

Town/City/Village Hazelhurst

County Oneida

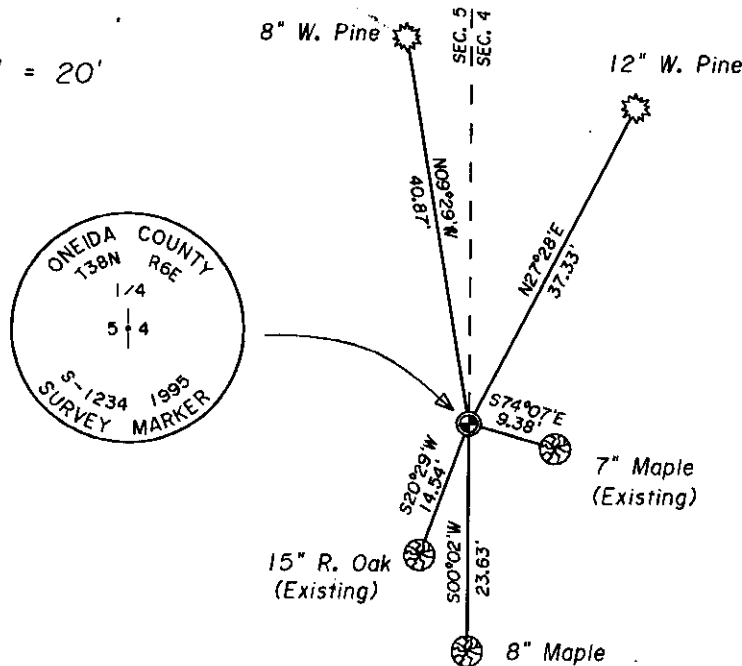


(b) (f) (g) (h) Description of monument found at this corner and if it was accepted, state all evidence (material, testimonial, occupational, plats, records, other monuments) used as a basis for accepting. If not accepted or if nothing was found, state evidence used as basis for establishing location. If reestablished through lost corner proportionate methods, indicate all monuments, distances and directions used to establish. Indicate type of monument found or set and sign post.

October 1st, 1863 - Alexander Anderson, Deputy Surveyor, set quarter section post witnessed by an 8" Aspen, N63½°E, 7 links; and by a 7" Aspen, S26°W, 8 links.  
 August 19th, 1941 - V. M. Maine, Engineer & Surveyor, notes that he recovered Burnett's iron pipe witnessed by an 8" Black Oak, S20°W, 21 4/10 links; and a 4" Maple S70°E, 14 4/10 links.  
 August 11th, 1947 - Walter A. Hennig, Surveyor, identifies corner in a retracement survey of lots in the Plat of Keith's Cliff as being monumented by an iron pipe and Pine post; witnessed by a 12" Oak, S24°W, 14.0 feet, and a 4" Maple S71°E, 9.3 feet.  
 October 3rd, 1950 - F. R. Wincentzen, County Surveyor, identifies corner as being a concrete monument set by V. M. Maine (Oct. 18th, 1941). Unable to locate notes by Maine which verify that a concrete monument was set to replace the iron pipe.  
 April 17th, 1995 - James D. Rein, R.L.S. No. 1234, recovered a 1" dia. iron pipe referenced by the following bearing trees: 15" Oak, S20°29'W, 14.54 feet; and a 7" Maple, S74°07'E, 9.38 feet. Replaced the iron pipe with a capped 2" dia. x 30" long flared bottom aluminum monument. Set plastic marker post 1/4 foot west of corner monument and made new reference bearing tree ties as shown in plan view.

(c) (d) (e) Plan view of corner with ties to at least 4 witness monuments. If in disagreement with previously established corner, show the distances between the two corners and also indicate the ties to the disputed corner.

SCALE 1" = 20'



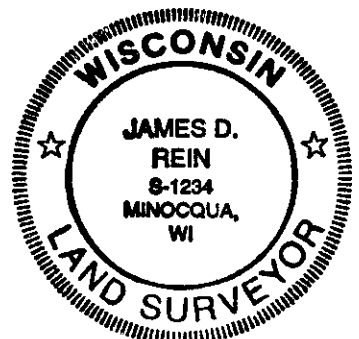
James D. Rein, Registered Land Surveyor No. 1234

(i) I, \_\_\_\_\_  
 (type or print name) certify that the corner location on this record was determined by me or under my direction and control and that this U.S. Public Land Survey Monument Record is correct and complete to the best of my knowledge and belief.

Signature

Date

4/20/95



Index No. C-9

3806652000

# U.S. PUBLIC LAND SURVEY MONUMENT RECORD

REGISTER OF DEEDS OFFICE  
ONEIDA COUNTY  
FILED

DEC 23 2020

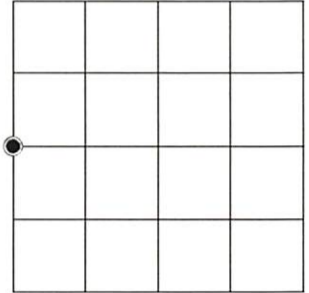
KYLE J. FRANSON  
REGISTER OF DEEDS

Note: This form is intended and designed to fulfill all requirements of the Wisconsin Administrative Code, Chapter A-E 7.08 U.S. Public Land Monument Record (3)(a)(b)(c)(d)(e)(f)(g)(h)(i). An additional sheet may be added if necessary to conform with said requirements.

(a) CORNER LOCATION:  
W 1/4 corner of Section 4  
Township 38 North  
Range 6 East  
Town of Hazelhurst  
County of Oneida

(RECORDING AREA)

SECTION 4



(b) HISTORY OF ORIGINAL CORNER ESTABLISHMENT

Original Surveyor:  
Date of Survey: Commenced  
Completed  
Original B.T.'S

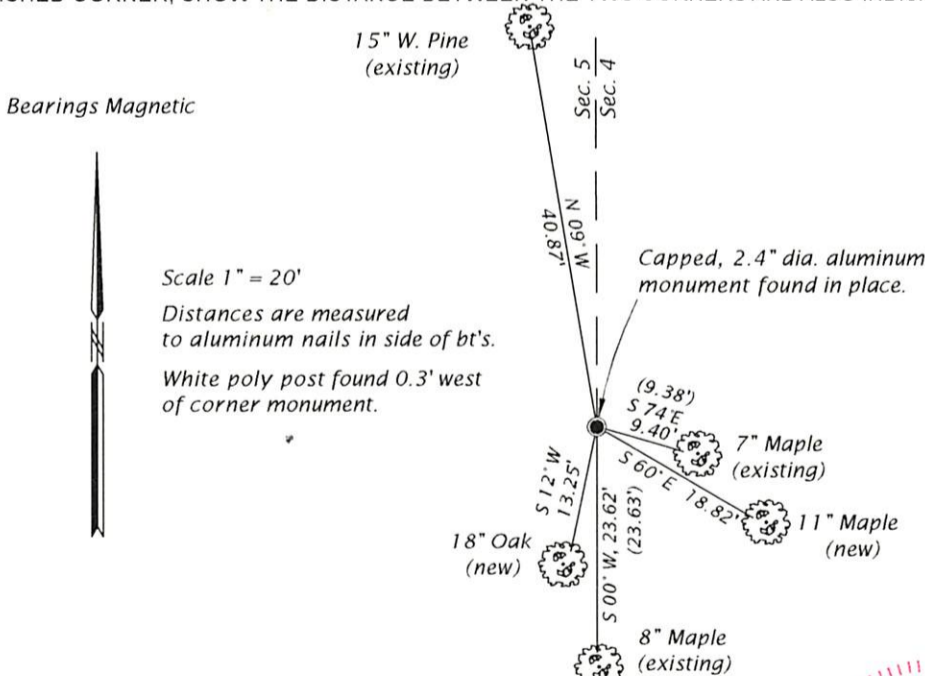
SEE PREVIOUS U.S.P.L.S. MONUMENT  
RECORD DATED April 20, 1995

(f)(g)(h) DESCRIPTION OF MONUMENT FOUND AT THIS CORNER AND IF IT WAS ACCEPTED, STATE ALL EVIDENCE (MATERIAL, TESTIMONIAL, OCCUPATIONAL, PLATS, RECORD, OTHER MONUMENTS) USED AS A BASIS FOR ESTABLISHING LOCATION. IF NOT ACCEPTED OR IF NOTHING WAS FOUND, STATE EVIDENCE USED AS BASIS FOR ESTABLISHING LOCATION. IF REESTABLISHED THROUGH LOST CORNER PROPORTIONATE METHODS, INDICATE ALL MONUMENTS, DISTANCES AND DIRECTIONS USED TO ESTABLISH. INDICATE TYPE OF MONUMENT AND SIGN POST FOUND OR SET.

*This is a perpetuation of a previous U.S.P.L.S. Monument Record by me, dated 4/20/95, and filed in the office of the Oneida County Register of Deeds. A complete history of the corner can be found on the previous monument record. I accept the previous location as a true and faithful perpetuation or reestablishment of the original corner location and further perpetuate it as follows.*

*July 16, 2020 - James D. Rein, PLS No.-1234, we recovered and I accepted the Oneida County aluminum monument we previously set, perpetuating said corner in 1995. The northeasterly and southwesterly bearing trees are now gone, thus we established two new bearing trees as shown below.*

(c)(d)(e) PLAN VIEW OF CORNER WITH TIES TO AT LEAST 4 WITNESS MONUMENTS. IF IN DISAGREEMENT WITH PREVIOUSLY ESTABLISHED CORNER, SHOW THE DISTANCE BETWEEN THE TWO CORNERS AND ALSO INDICATE THE TIES TO THE DISPUTED CORNER.



(i) I, JAMES D. REIN, PROFESSIONAL LAND SURVEYOR NO. S-1234 HEREBY CERTIFY THAT THE CORNER LOCATION ON THIS RECORD WAS DETERMINED BY ME OR UNDER MY DIRECTION AND CONTROL AND THAT THIS U.S. PUBLIC LAND SURVEY MONUMENT RECORD IS CORRECT AND COMPLETE TO THE BEST OF MY KNOWLEDGE AND BELIEF.



SIGNATURE James D. Rein DATE 12/24/20

INDEX NO. C-9  
3806052000