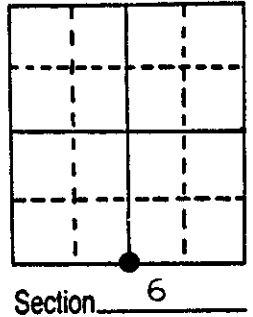


U.S. PUBLIC LAND SURVEY MONUMENT RECORD

Note: This form is intended and designed to fulfill all requirements of Wisconsin Administrative Code, Chapter A-E 5.02, U.S. Public Land Survey Monument Record (3) (a) (b) (c) (d) (e) (f) (g) (h) (i). An additional sheet may be added if necessary to conform with said requirements.

(a) Corner location: Township 38 North
 Range 6 East/~~West~~
 Town/City/Village Hazelhurst
 County Oneida

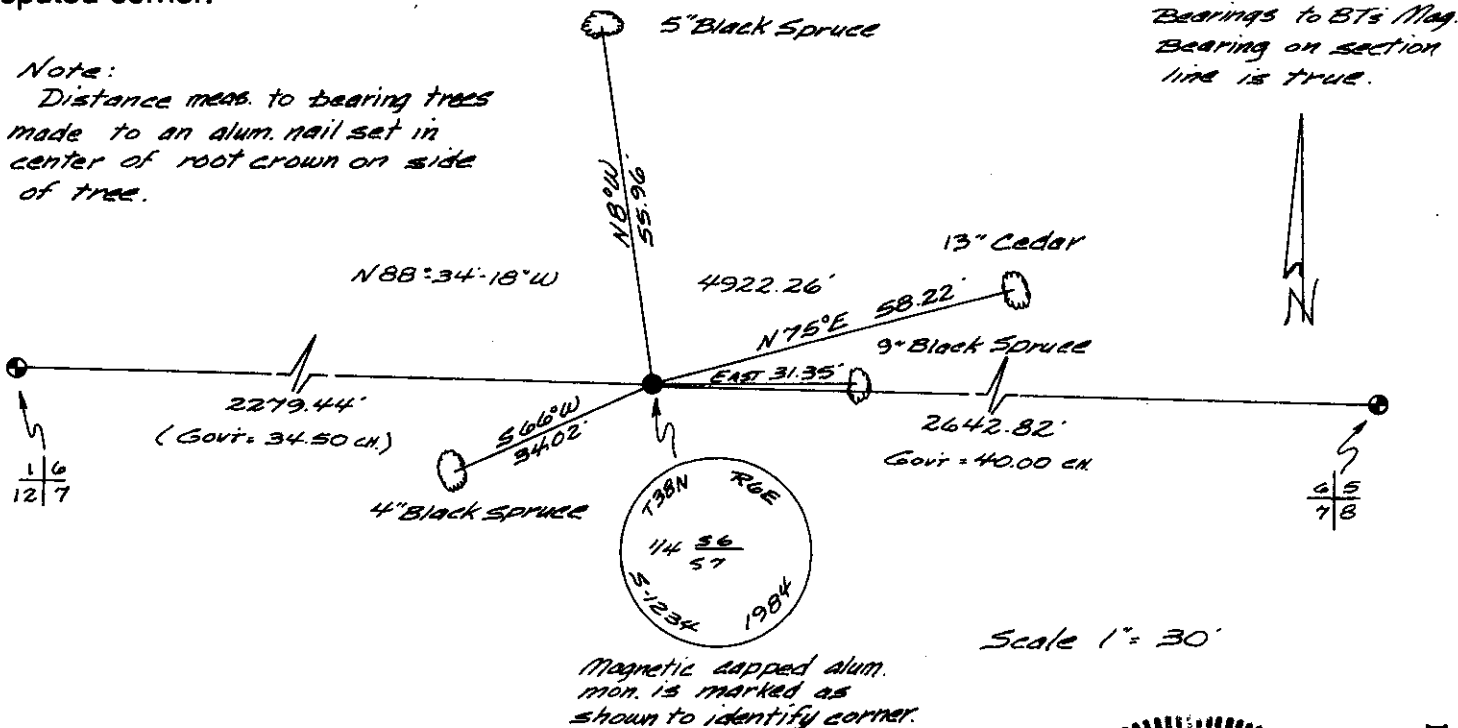


(b) (f) (g) (h) Description of monument found at this corner and if it was accepted, state all evidence (material, testimonial, occupational, plats, records, other monuments) used as a basis for accepting. If not accepted or if nothing was found, state evidence used as basis for establishing location. If reestablished through lost corner proportionate methods, indicate all monuments, distances and directions used to establish.

October 1863 - Alexander Anderson, Deputy Surveyor - Set quarter section post. Original bearing trees: Spruce 8" S16°W, 5 lks
 Cedar 8" N47°E 46 lks

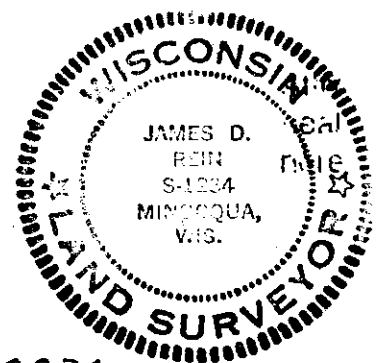
December 18, 1984 - James D. Rein, R.L.S. I found no evidence of the original corner or of any subsequent record or physical remonumentation. Thus I re-establish the corner by single proportionate measurement as shown below in the plan view. Monument corner with a magnetic capped 2" diameter x 60" long aluminum pipe up one foot. Corner is located in swamp approximately 165 feet from easterly edge. Made new BTs as shown in plan view.

(c) (d) (e) Plan view of corner with ties to at least 4 witness monuments. If in disagreement with previously established corner, show the distances between the two corners and also indicate the ties to the disputed corner.



(i) I, JAMES D. REIN, Reg. Land Surveyor No. S-1234
 (type or print name) certify that the corner location on this record was determined by me or under my direction and control and that this U.S. Public Land Survey Monument Record is correct and complete to the best of my knowledge and belief.

James D Rein Jan. 31st, 1985
 Signature Date



Index No. E-3

3806060020