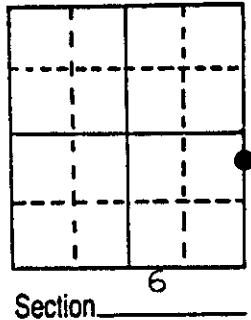


U.S. PUBLIC LAND SURVEY MONUMENT RECORD

Note: This form is intended and designed to fulfill all requirements of Wisconsin Administrative Code, Chapter A-E 5.02, U.S. Public Land Survey Monument Record (3) (a) (b) (c) (d) (e) (f) (g) (h) (i). An additional sheet may be added if necessary to conform with said requirements.

(a) Corner location: Township 38 North
 Range 6 East/West
 Town/City/Village HAZELHURST
 County ONEIDA

South Meander
 Corner on East
 line of Sec. 6



(b) (f) (g) (h) Description of monument found at this corner and if it was accepted, state all evidence (material, testimonial, occupational, plats, records, other monuments) used as a basis for accepting. If not accepted or if nothing was found, state evidence used as basis for establishing location. If reestablished through lost corner proportionate methods, indicate all monuments, distances and directions used to establish.

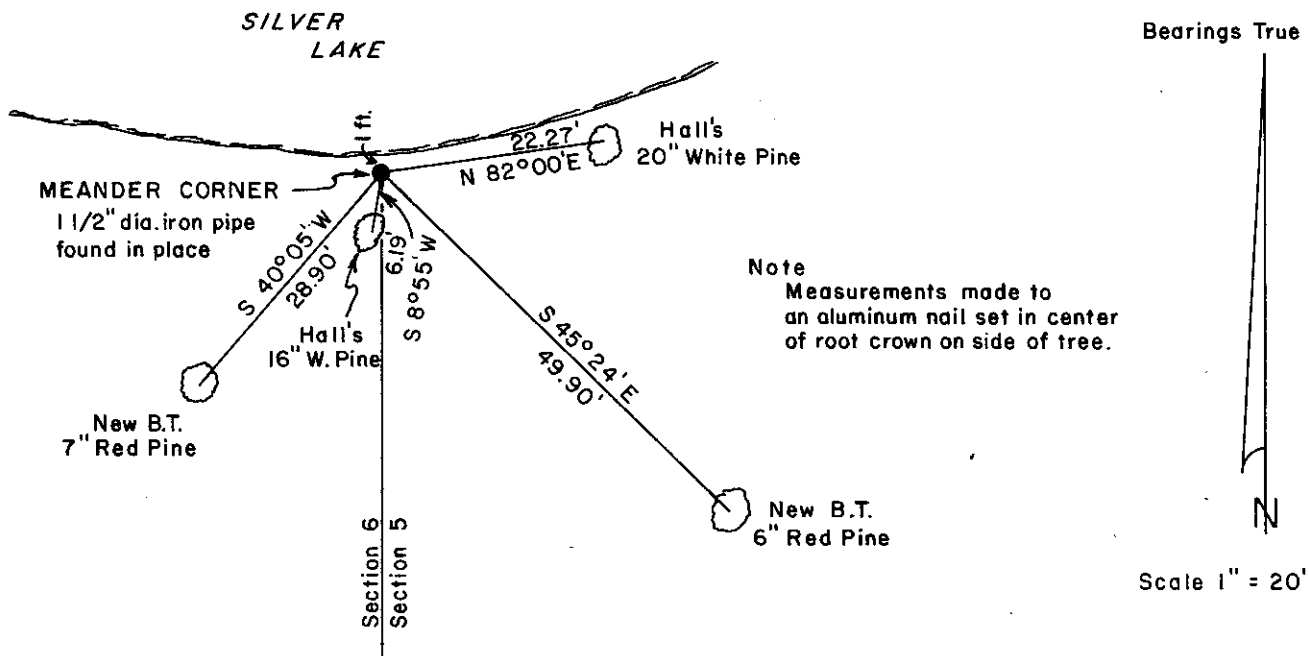
October 1863- Alexander Anderson, Deputy Surveyor - Set meander post.
 Original bearing trees: Y.Pine 12" S48½°W, 12 lks; Y.Pine 12" S85°E, 12 lks.

June 22 1933- Ray H. Hall, Deputy County Surveyor- Found stub of SW original bearing Marks OK. Other bearing gone. Drive new post by McCoy's stake and mark: W. Pine 6" S10½°W, .092 ch.; W.Pine 12" N83°E .33 c
 Original S48½°W, 12 links.

Dec.13 1984- James D. Rein RLS- Found a 1½" dia. iron pipe, firm extending one foot above ground and one foot from water. Remains of original Pine stp. down but marks on face are visible, bears S48½°W 7 feet. Hall's bearing trees: 20" W. Pine N82°-00'E, 22.27 feet; 16" W. Pine S8°-55'W, 6.19 feet.

Made new bearing trees as shown below on plan view.

(c) (d) (e) Plan view of corner with ties to at least 4 witness monuments. If in disagreement with previously established corner, show the distances between the two corners and also indicate the ties to the disputed corner.

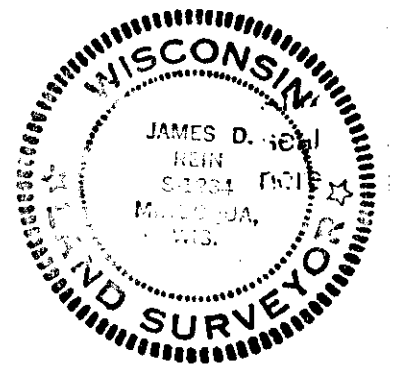


Note
 Measurements made to
 an aluminum nail set in center
 of root crown on side of tree.

Scale 1" = 20'

(i) I, James D. Rein, Reg. Land Surveyor S-1234
 (type or print name) certify that the corner location on this record was determined by me or under my direction and control and that this U.S. Public Land Survey Monument Record is correct and complete to the best of my knowledge and belief.

James D. Rein Jan. 31st, 1985
 Signature Date



3806061600

Index No. 2