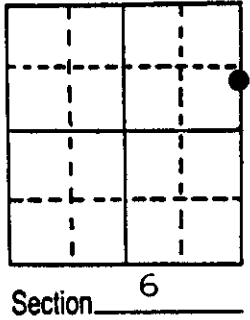


# U.S. PUBLIC LAND SURVEY MONUMENT RECORD

Note: This form is intended and designed to fulfill all requirements of Wisconsin Administrative Code, Chapter A-E 5.02, U.S. Public Land Survey Monument Record (3) (a) (b) (c) (d) (e) (f) (g) (h) (i). An additional sheet may be added if necessary to conform with said requirements.

(a) Corner location: Township 38 North  
 Range 6 East/~~West~~

North Meander  
 Corner on East  
 line of Sec. 6

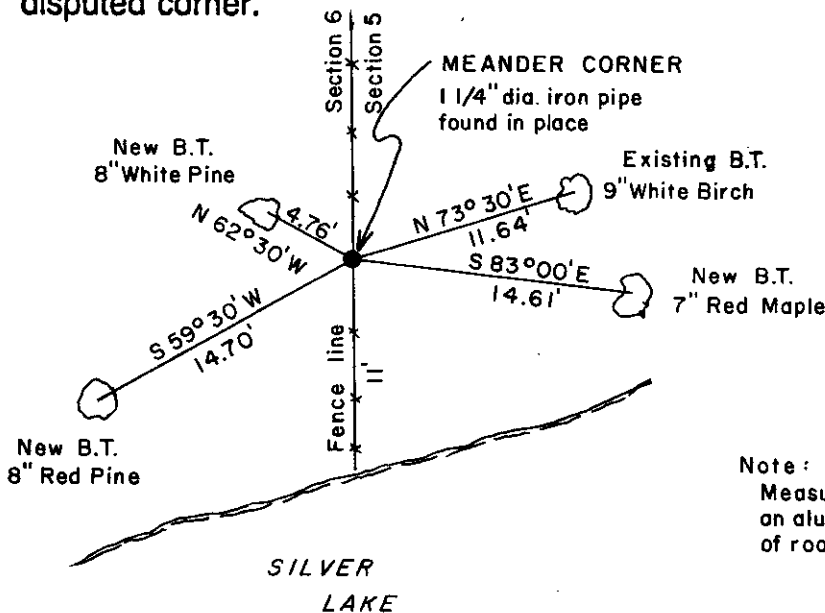


Town/City/Village Hazelhurst  
 County Oneida

(b) (f) (g) (h) Description of monument found at this corner and if it was accepted, state all evidence (material, testimonial, occupational, plats, records, other monuments) used as a basis for accepting. If not accepted or if nothing was found, state evidence used as basis for establishing location. If reestablished through lost corner proportionate methods, indicate all monuments, distances and directions used to establish.

Oct. 1863- Alexander Anderson, Deputy Surveyor - Set meander post.  
 Original bearing trees: Y.Pine 20" N83°W, 44 lks.  
 Y.Pine 10" N56°E, 90 lks.  
 June 22 1933- Ray H. Hall, Deputy County Surveyor - 22.243 ch. south of Section corner fall .3' E. of McCoy's iron for M.C. at 24.44 ch. U.S. record in Lake.  
 1955- Robert Badow, Genisot Engineering - Survey notes show corner monumented by iron pipe S4°-22'E, 1450.8 feet from Section corner.  
 Dec. 13 1984 - James D. Rein RLS - At 1448.83 feet south of Section corner found a 1 1/4" dia. iron pipe extending 3" above ground on North-South barbed wire fence. Corner is 11 ft. from high water line of Silver Lake.  
 Existing bearing tree: 9" White Birch, N73°-30'E, 11.64 feet.  
 Made new bearing trees as shown below in plan view.

(c) (d) (e) Plan view of corner with ties to at least 4 witness monuments. If in disagreement with previously established corner, show the distances between the two corners and also indicate the ties to the disputed corner.



Bearings True

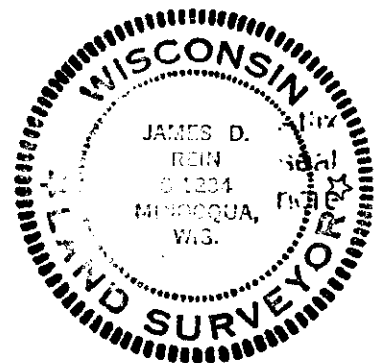


Scale 1" = 10'

Note:  
 Measurements made to  
 on aluminum nail set in center  
 of root crown on side of tree.

(i) I, James D. Rein, Reg. Land Surveyor No. S-1234  
 (type or print name) certify that the corner location on this record was determined by me or under my direction and control and that this U.S. Public Land Survey Monument Record is correct and complete to the best of my knowledge and belief.

James D. Rein Jan. 31st 1985  
 Signature Date



3806062600

Index No. B-3