

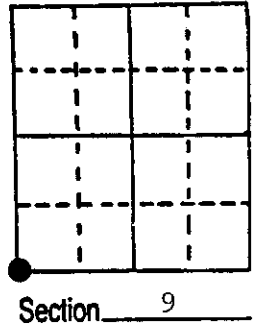
U.S. PUBLIC LAND SURVEY MONUMENT RECORD

Note: This form is intended and designed to fulfill all requirements of Wisconsin Administrative Code, Chapter A-E 5.02, U.S. Public Land Survey Monument Record (3) (a) (b) (c) (d) (e) (f) (g) (h) (i). An additional sheet may be added if necessary to conform with said requirements.

(a) Corner location: Township 38 North
 Range 6 East/West

Town/City/Village Hazelhurst

County Oneida



(b) (f) (g) (h) Description of monument found at this corner and if it was accepted, state all evidence (material, testimonial, occupational, plats, records, other monuments) used as a basis for accepting. If not accepted or if nothing was found, state evidence used as basis for establishing location. If reestablished through lost corner proportionate methods, indicate all monuments, distances and directions used to establish.

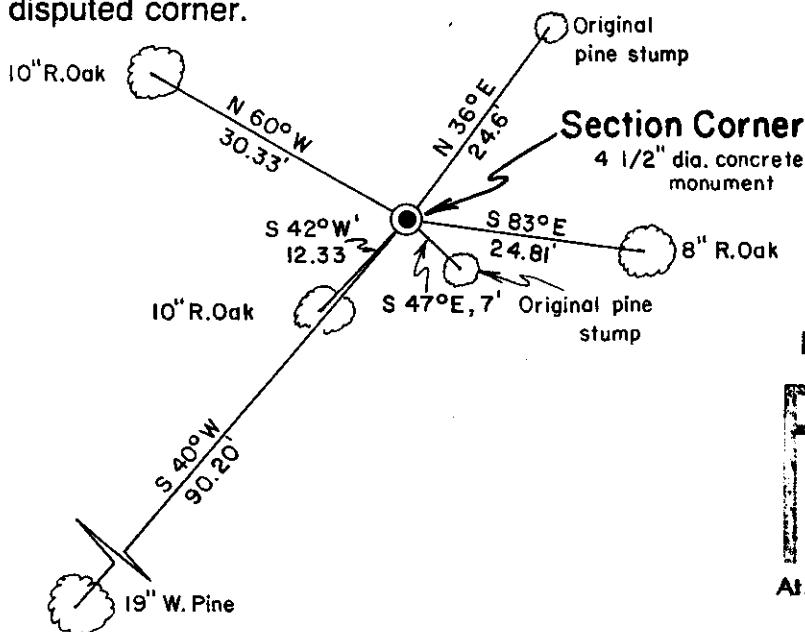
September 30, 1863 - Alexander Anderson, Deputy Surveyor - Set post common to sections 8, 9, 16 and 17. Bearing trees: Y. Pine 36", N36°E, 36 links. W. Pine 14" S47°E, 11 links.

February 1, 1916 - D.H. Vaughan - Set post from stumps of original trees. Oak 6", N67°W, 30 feet.

May, 1949 - F. R. Wincentzen - found concrete monument. Bearing trees: Pine stump 20", N39°E, 24.5 feet (old). W. Pine 12", S40°W, 90.4 feet.

July 9, 1986 - James D. Rein - found 4½" dia. concrete monument projecting 5" above ground. Existing bearing trees: 19" W. Pine, S40°W, 90.20 feet, 10" R. Oak, S42°W, 12.33 feet, 8" R. Oak S83°E, 24.81 feet, Original Pine Stump N36°E, 24.6 feet, Original Pine Stump, S47°E, 7 feet. Made new bearing tree: 10" R. Oak N60°W, 30.33 feet. Measurements to trees made to an aluminum nail set in center of root crown on side of trees.

(c) (d) (e) Plan view of corner with ties to at least 4 witness monuments. If in disagreement with previously established corner, show the distances between the two corners and also indicate the ties to the disputed corner.



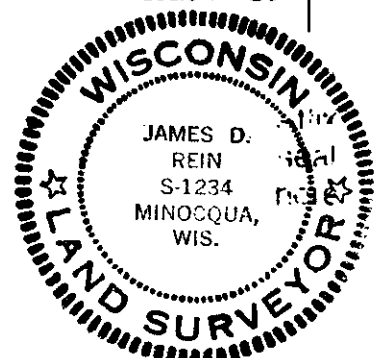
REGISTER OF DEEDS OFFICE
 ONEIDA COUNTY, WIS.
FILED
 NOV 2 1986
 At 8:00 O'Clock A.M.
 DORIS VERAGE KUEHN
 REGISTER OF DEEDS

Bearings Magnetic

Scale 1" = 20'

(i) I, James D. Rein, Registered Land Surveyor No. S-1234
 (type or print name) certify that the corner location on this record was determined by me or under my direction and control and that this U.S. Public Land Survey Monument Record is correct and complete to the best of my knowledge and belief.

James D. Rein
 Signature Date 7/25/86



Index No. 6-9

3806080000