

JAN 11 2007

This form is intended to fulfill the requirements of Chapter A-E7.08 (3)(a) thru (i) U.S. Public Land Survey Monument Location Record, Wisconsin Administrative Code. Use the reverse side of form for continuation.

At _____ O'Clock _____ M
THOMAS H. LEIGHTON
REGISTER OF DEEDS

Recorders Data

U.S. PUBLIC LAND SURVEY MONUMENT LOCATION RECORD

USPLS CORNER: EAST WITNESS MC SECTION: 17 TOWNSHIP: 38 NORTH RANGE: 06 EAST

NAME OF WATERWAY FOR M.C. CORNER: SEVENTEEN LAKE SECTION LINE: NORTH

~~(CITY)(VILLAGE)(TOWN)~~ OF: HAZELHURST COUNTY OF: ONEIDA

Description of monument found or placed and all other evidence used as the basis for monument location; including monuments and measurements required if the corner location was reestablished by lost corner proportionate methods. Also indicate name of the original surveyor, original survey date and the corner monument, bearing trees, witness or other reference monuments established, including measured bearing and distance ties, from available survey records.

In September/October 1863, Alexander Anderson/GLO set a wood post as the original MC and noted OBTs: a 14" Pr N15°W 4 links and an 18" Pw S62°E 62 links; all are now obliterated.

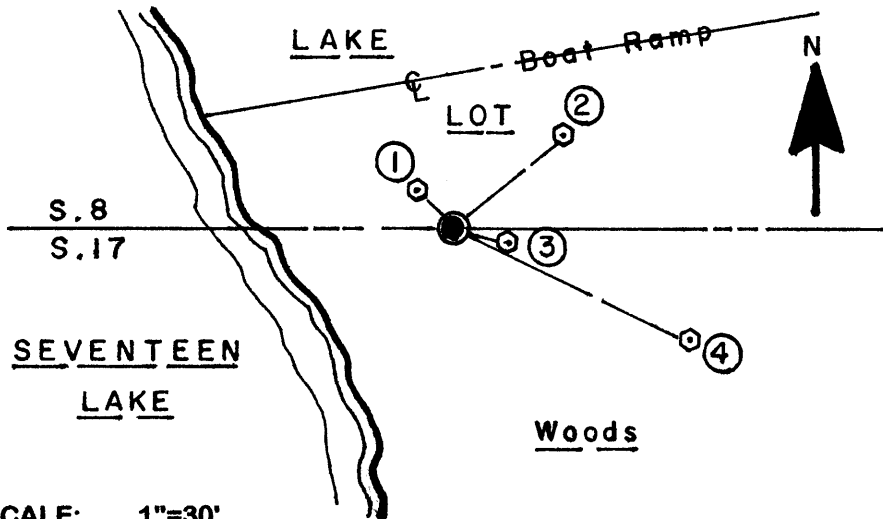
Per his notes on Page 179 of Wincentsen Book 1 in Oneida County survey records, Forrest Wincentsen/RLS 155, notes an iron pipe at this Witness MC and BT's: a 12" Pr N48°W 18.0', now a 20" Pr N44°W; an 18" Pw S57°E 50.0', now a 26" Pw N44°W; and an old Pine stump N29°W 5..6', now a flush filled in stump hole with rotted fragments at grade.

In February 1980, David F. McMullen/RLS 1340 notes an iron pipe found at this Witness MC as well as Wincentsen's older BTs per his Certified Survey Map No. 859 filed in Oneida County records.

On August 9, 2006 I found an older undisturbed 3/4" dia. galvanized iron pipe at this Witness MC with uncapped top 3" above grade, which I left in place and drove a standard 2" dia. x 30" long aluminum pipe monument over it with stamped Oneida County cap 15" above grade due to subgrade refusal and placed nearby rocks as a cairn at grade around the monument.

The corner falls about 28.5' East of existing lakeshore bearing N30°W+/- and about 13' East of estimated OHWM, at the SW corner of improved lake lot at Fire No. 10325 Cedar Falls Road, owned by Walter Muller, etux who witnessed this recovery. A paved boat ramp also bears S80°W to lake about 24' North of the corner.

Plan view map of monument location with bearing and distance ties to a minimum of four(4) described witness or reference monuments of concrete, natural stone, iron, live bearing trees or equivalent material. If applicable, also show a minimum of two(2) bearing and distance ties to any other monument found and not accepted; including the bearing and distance from the accepted monument.



WITNESS MONUMENT TIES:

- ① New 7" Pw BT N45°W 8.15'.
- ② New 7" Pw BT N51°E 23.34'.
- ③ New 6" Mr BT S75°E 8.80'.
- ④ New 16" Pr BT S65°E 41.00'.

I found and pulled an older 1/2" x 1" x 4" high marker post nearby and left flat on grade next to corner monument.

I set a standard white poly "T" marker post 6" South of the corner monument.

SCALE: 1"=30'

Unless otherwise indicated, all bearing tree ties are to a .25" dia. by 2.5" long PK nail with a 1.25" dia. steel washer driven into unblazed right face and a .25" dia. by 2.5" long PK nail with a 2" dia. steel washer stamped BT is also shown in unblazed face of bearing tree at DBH; the basis for measured bearings is by compass to nearest degree and all tie distances are measured horizontal by steel tape corrected to nearest 1/100th feet at standard temperature of 68° F.

RLS SEAL:



LAND SURVEYOR CERTIFICATE:

I, William C. Rohde, hereby certify that I am duly licensed as a Professional Land Surveyor in the State of Wisconsin; that this USPLS monument location was determined by me and/or under my direct supervision and control; and that this U.S. Public Land Survey Monument Location Record is true and correct to the best of my knowledge and belief.

Signed: *William C. Rohde*
William C. Rohde RLS 841

	T 38N		
	17		
	R 6E		

SECTION LOCATION MAP

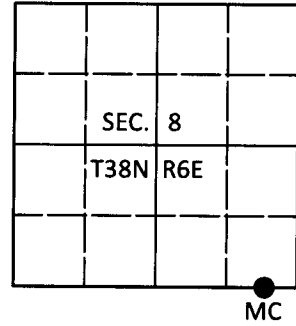
INDEX NO. J 8-9
3806080004

U.S. PUBLIC LAND SURVEY MONUMENT RECORD

Note: This form is intended and designed to fulfill all requirements of Wisconsin Administrative Code, Chapter A-E 7.08 U.S. Public Land Survey Monument Record (3)(a-i).

(a) CORNER LOCATION
 Wit. Meander Cor. of Secs. 8 & 17
 Township 38 North
 Range 6 East of the 4th P.M.
 Town of Hazelhurst
 County of Oneida

WISCORS - Oneida County
 N: 220,061.58 USft
 E: 175,427.89 USft
 Datum: NAD 83(2011)
 GNSS Method: RTN - Offset
 GNSS Control: WISCORS VRS



(b) HISTORY OF ORIGINAL CORNER ESTABLISHMENT

Original Surveyor: _____ Original Accessories: _____
 Date of Survey Commenced: _____ See previous USPLS Monument Record
 Completed: _____

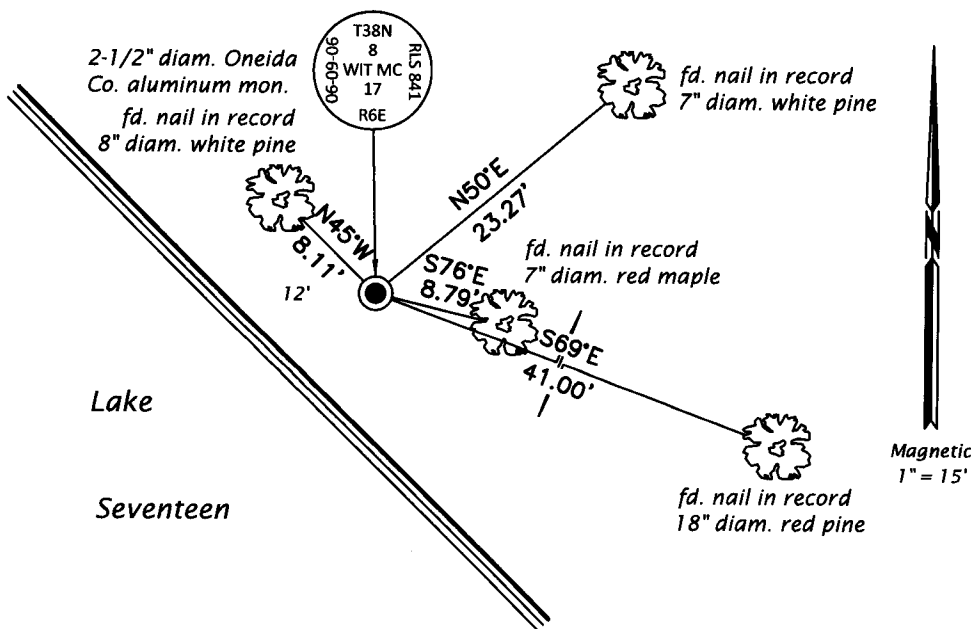
(b)(f)(g)(h) Description of monument found at this corner and if it was accepted, state all evidence (material, testimonial, occupational, plats, records, other monuments) used as a basis for accepting. If not accepted or if nothing was found, state evidence used as basis for establishing location. If re-established through lost corner proportionate methods, indicate all monuments, distances and directions used to establish. Indicate type of monument and sign post found or set.

This is a perpetuation of a previous USPLS Monument Record by William C. Rohde, RLS dated December 20, 2006 and filed in the office of the Oneida County Register of Deeds. A complete history of the corner can be found on the previous monument record. I accept the previous location as a true and faithful perpetuation or reestablishment of the original corner location and further perpetuate it as follows.

April 9, 2018: I found and accepted the record monument, a 2-1/2" diam. aluminum pipe with a 3-1/4" diam. Oneida Co. aluminum cap projecting 12" above the ground surface. I found or established accessories as shown below. I found a white vinyl sign post bearing South, 0.6 ft.

The coordinate value shown has been verified by at least one of the following methods: 1) comparison to a previously GPS determined published value; 2) the value is the average of two or more GPS observations at a markedly different time; 3) one or more distances were measured back to the GPS observed corner from temporary GPS observed offset locations.

(c)(d)(e) Plan view of corner with ties to at least 4 witness monuments. If in disagreement with previously established corner, show the distances between the two corners and also indicate the ties to the disputed.

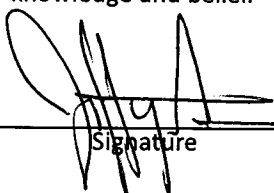


REGISTER OF DEEDS OFFICE
 ONEIDA COUNTY
 FILED

MAY 01 2018

KYLE J. FRANSON
 REGISTER OF DEEDS

(i) I, Jeffrey W. Austin, Professional Land Surveyor No. S-1885, hereby certify that the corner location on this record was determined by me or under my direction and control and that this U.S. Public Land Survey Monument Record is correct and complete to the best of my knowledge and belief.


 Signature

APR. 23, 2018
 Date