

At _____ O'Clock _____ M
THOMAS H. LEIGHTON
REGISTER OF DEEDS
Recorders Data

This form is intended to fulfill the requirements of Chapter A-E7.08 (3)(a) thru (i) U.S. Public Land Survey Monument Location Record, Wisconsin Administrative Code. Use the reverse side of form for continuation.

U.S. PUBLIC LAND SURVEY MONUMENT LOCATION RECORD

USPLS CORNER: WEST WITNESS MC SECTION: 17 TOWNSHIP: 38 NORTH RANGE: 6 EAST
 NAME OF WATERWAY FOR M.C. CORNER: SEVENTEEN LAKE SECTION LINE: NORTH
 (CITY)(VILLAGE)(TOWN) OF: HAZELHURST COUNTY OF: ONEIDA

Description of monument found or placed and all other evidence used as the basis for monument location; including monuments and measurements required if the corner location was reestablished by lost corner proportionate methods. Also indicate name of the original surveyor, original survey date and the corner monument, bearing trees, witness or other reference monuments established, including measured bearing and distance ties, from available survey records.

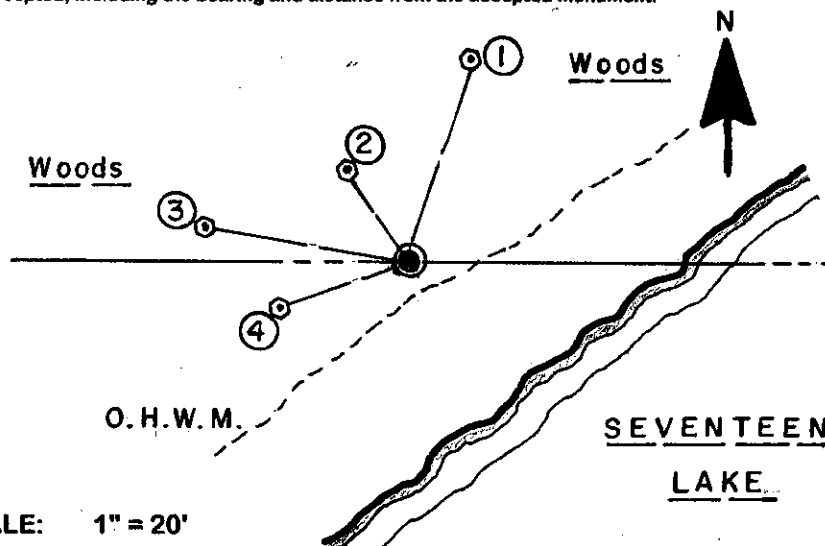
In October 1863, Alexander Anderson/GLO set a wood post as the original meander corner and noted OBT's: a 5" Bw S77.5°W 17 links and a 5" Bw N36°W 35 links; all are now obliterated.

In October 1975, Stuart L. Foltz/RLS 1170 found and accepted a 3.5" x 5" concrete monument at this Witness MC and noted BTs: 14" Pw N70°E 12.2' and a 14" Pr N20°E 29.0'; both found OK.

In August 2006, I found the old 3.5" x 5" concrete monument of record plumb and 20" high with 1" dia. iron pipe center insert; however, about 8" of the concrete monument was broken away from the iron pipe insert above grade, so I broke away the deteriorating upper 12" or so of the monument from the iron pipe insert and drove a standard 2" dia. x 22" aluminum monument with stamped Oneida County cap over the monument to refusal about 20" above grade and placed several pieces of the broken-up concrete monument around the bottom of the new monument as a cairn to secure it for new witness ties. Corner monument falls at the bottom of a steep slope up to the North and is 23.5' North of existing lake shoreline bearing S50°W and about 3' North of OHWM evidenced by lateral rooting from a nearby large Pw.

This recovery was completed on August 9, 2006 and was witnessed by John Fahrenbach, adjacent property owner at Fire No. 10403 Cedar Falls Road.

Plan view map of monument location with bearing and distance ties to a minimum of four(4) described witness or reference monuments of concrete, natural stone, iron, live bearing trees or equivalent material. If applicable, also show a minimum of two(2) bearing and distance ties to any other monument found and not accepted; including the bearing and distance from the accepted monument.



WITNESS MONUMENT TIES:

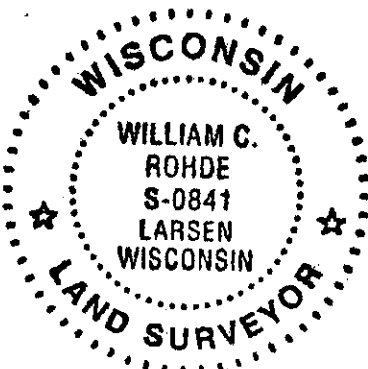
- ① New 4" Pw BT N18°E 22.05'
- ② New 5.5" Or BT N34°W 11.46'
- ③ New 14" Oak BT N80°W 21.74'
- ④ New 6" Pw BT S70°W 13.98'

Standard white poly 'T' marker post set 13' South of new corner monument.

SCALE: 1" = 20'

Unless otherwise indicated, all bearing tree ties are to a .25" dia. by 2.5" long PK nail with a 1.25" dia. steel washer driven into unblazed right face and a .25" dia. by 2.5" long PK nail with a 2" dia. steel washer stamped BT is also driven into unblazed face of bearing tree at DBH; the basis for measured bearings is by compass to nearest degree and all tie distances are measured horizontal by steel tape corrected to nearest 1/100th feet at standard temperature of 68° F.

RLS SEAL:



LAND SURVEYOR CERTIFICATE:

I, William C. Rohde, hereby certify that I am duly licensed as a Professional Land Surveyor in the State of Wisconsin; that this USPLS monument location was determined by me and/or under my direct supervision and control; and that this U.S. Public Land Survey Monument Location Record is true and correct to the best of my knowledge and belief.

Signed: *William C. Rohde*
William C. Rohde RLS 841

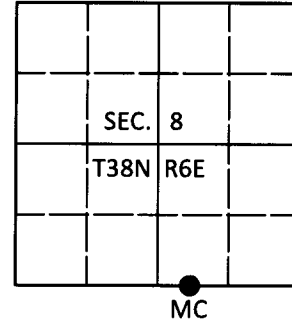
		T 38N	
		17	
		R 6E	

U.S. PUBLIC LAND SURVEY MONUMENT RECORD

Note: This form is intended and designed to fulfill all requirements of Wisconsin Administrative Code, Chapter A-E 7.08 U.S. Public Land Survey Monument Record (3)(a-i).

(a) CORNER LOCATION
 Wit. Meander Cor. of Secs. 8 & 17
 Township 38 North
 Range 6 East of the 4th P.M.
 Town of Hazelhurst
 County of Oneida

WISCORS - Oneida County
 N: 220,190.36 USft
 E: 173,968.70 USft
 Datum: NAD 83(2011)
 GNSS Method: RTN - Offset
 GNSS Control: WISCORS VRS



(b) HISTORY OF ORIGINAL CORNER ESTABLISHMENT

Original Surveyor:

Original Accessories:

Date of Survey

Commenced:
 Completed:

See previous USPLS Monument Record

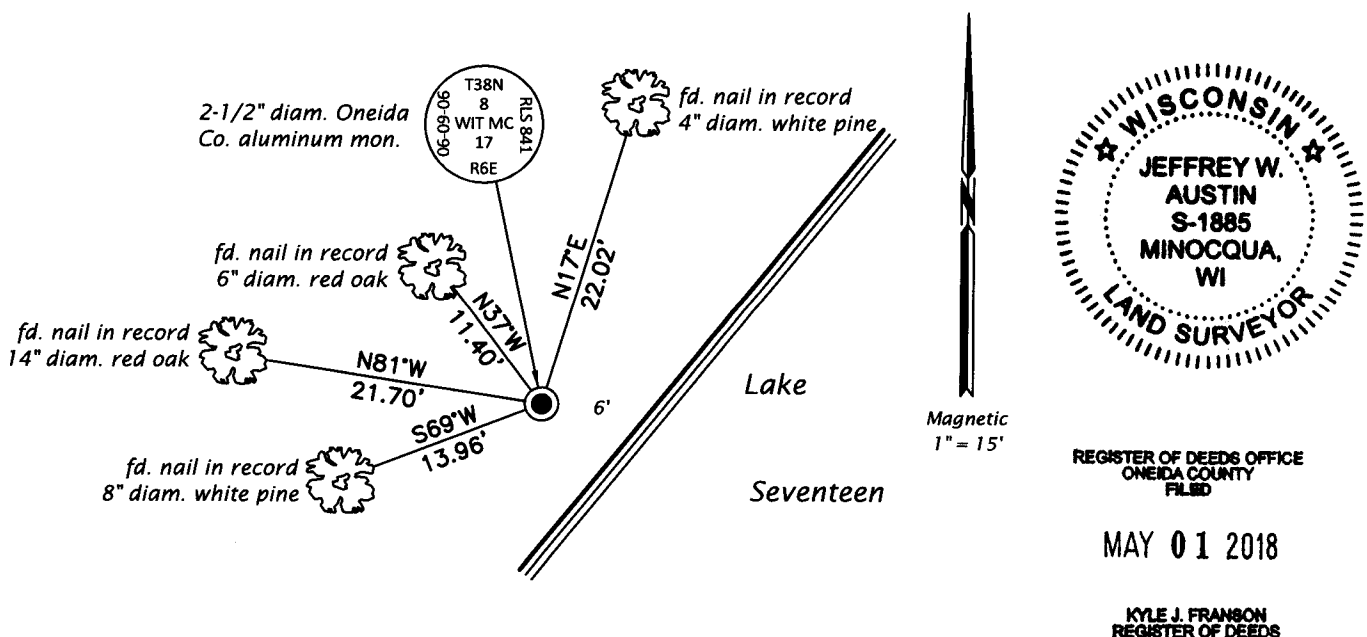
(b)(f)(g)(h) Description of monument found at this corner and if it was accepted, state all evidence (material, testimonial, occupational, plats, records, other monuments) used as a basis for accepting. If not accepted or if nothing was found, state evidence used as basis for establishing location. If re-established through lost corner proportionate methods, indicate all monuments, distances and directions used to establish. Indicate type of monument and sign post found or set.

This is a perpetuation of a previous USPLS Monument Record by William C. Rohde, RLS dated January 20, 2007 and filed in the office of the Oneida County Register of Deeds. A complete history of the corner can be found on the previous monument record. I accept the previous location as a true and faithful perpetuation or reestablishment of the original corner location and further perpetuate it as follows.

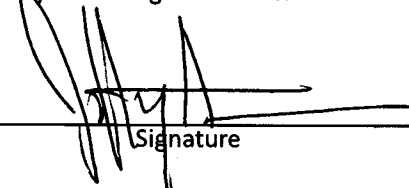
April 9, 2018: I found and accepted the record monument, a 2-1/2" diam. aluminum pipe with a 3-1/4" diam. Oneida Co. aluminum cap projecting 18" above the ground surface. I found or established accessories as shown below. I found a white vinyl sign post bearing South, 1.2 ft.

The coordinate value shown has been verified by at least one of the following methods: 1) comparison to a previously GPS determined published value; 2) the value is the average of two or more GPS observations at a markedly different time; 3) one or more distances were measured back to the GPS observed corner from temporary GPS observed offset locations.

(c)(d)(e) Plan view of corner with ties to at least 4 witness monuments. If in disagreement with previously established corner, show the distances between the two corners and also indicate the ties to the disputed.



(i) I, Jeffrey W. Austin, Professional Land Surveyor No. S-1885, hereby certify that the corner location on this record was determined by me or under my direction and control and that this U.S. Public Land Survey Monument Record is correct and complete to the best of my knowledge and belief.

 Signature
 APR. 23, 2018 Date