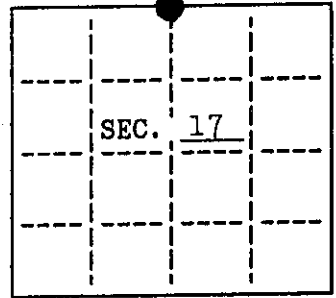


U. S. PUBLIC LAND SURVEY MONUMENT RECORD

Note: This form is intended and designed to fulfill all requirements of Wisconsin Administrative Code, Chapter X-8 7.08 U.S. Public Land Survey Monument Record (3)(a)(b)(c)(d)(e)(f)(g)(h)(i). An additional sheet may be added if necessary to conform with said requirements.

(a) CORNER LOCATION: State Plane Coordinates
N 1/4 corner of Sec. 17 X _____
 Township 38 North Y _____
 Range 6 East Datum Base _____
 Town/City Hazelhurst County of Oneida

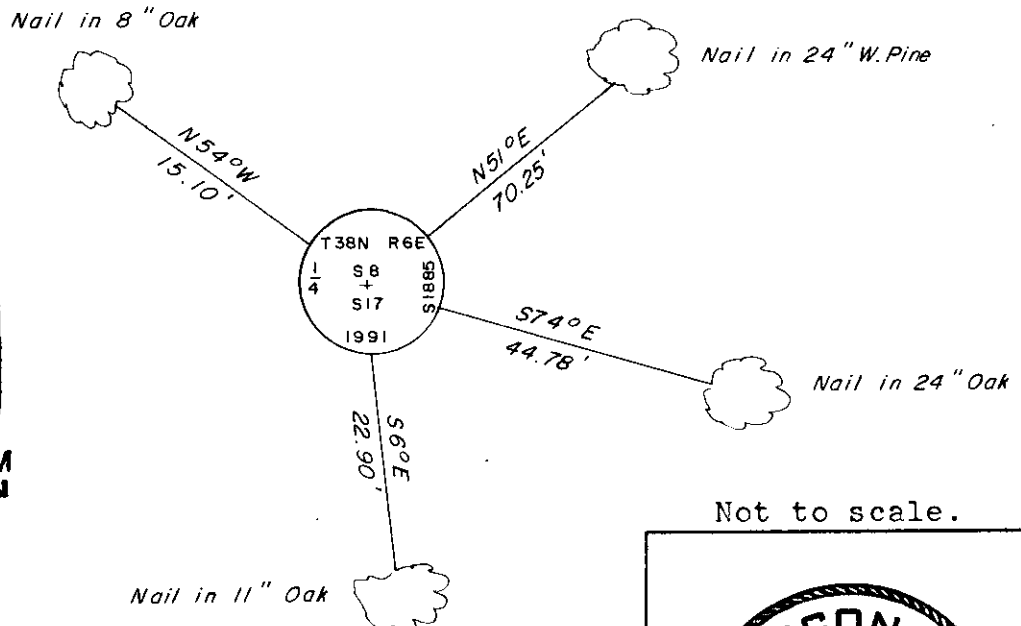


(b) HISTORY OF ORIGINAL CORNER ESTABLISHMENT
 Original Surveyor: Alexander Anderson Original B.T.'S
 Date of Survey: Commenced Sept. 1863 Aspen 10 S65°W, 18
 Completed Oct. 1863 Birch 12 N53°W, 29

(b)(f)(g)(h) Description of monument found at this corner and if it was accepted, state all evidence (material, testimonial, occupational, plats, records, other monuments) used as a basis for accepting. If not accepted or if nothing was found, state evidence used as basis for establishing location. If reestablished through lost corner proportionate methods, indicate all monuments, distances and directions used to establish. Indicate type of monument and sign post found or set.

See reverse...

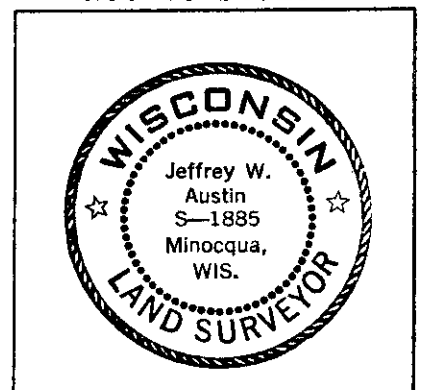
(c)(d)(e) Plan view of corner with ties to at least 4 witness monuments. If in disagreement with previously established corner, show the distances between the two corners and also indicate the ties to the disputed.



REGISTER OF DEEDS OFFICE
 ONEIDA COUNTY, WIS.
FILED
 SEP 16 1991
 At _____ O'Clock _____ M
THOMAS H. LEIGHTON
 REGISTER OF DEEDS

(i) I, Jeffrey W. Austin, Registered Land Surveyor hereby certify that the corner location on this record was determined by me or under my direction and control and that this U.S. Public Land Survey Monument Record is correct and complete to the best of my knowledge and belief.

Signature *Jeffrey W. Austin* Date 9-12-1991



INDEX NO. 3-7

3806080020

May, 1949: Notes by Wincentzen, iron pipe, W.Pine 20 N6°30'E, 69.7'; N.Pine 18" S82°W, 65.9'; Aspen 16" S76°W, 76 lks. (DHV).

July, 1968: Section subdivision by John Fisher, iron pipe, 18" Oak S75°E, 43.8'; 18" W.Pine N48°E, 69.5'.

September 7, 1991: I found and accepted a 1-1/4" dia. 27" long iron pipe. I replaced this pipe with a 2-1/2" dia. 30" long aluminum pipe with a 3-1/4" dia. Oneida Co. aluminum cap set 6" above the ground and marked as shown on the reverse side of this record. I found the following witnesses: (Wincentzen) Pine stump N13°W, 68.8'; (Fisher) set nail in W.Pine 24" N51°E, 70.25 feet; (Fisher) set nail in Oak 24" S74°E, 44.78 feet; set nail in Oak 11" S6°E, 22.90 feet; (Wincentzen) R.Pine snag 12" S87°W, 66.0 feet. I established the following witnesses: set nail in Oak 8" N54°W, 15.10 feet; set plastic sign post Northeast, 1-1/2 feet. I also set a DEEP-1 magnet below the new monument. The new bearing tree was not blazed.