

# U.S. PUBLIC LAND SURVEY MONUMENT RECORD

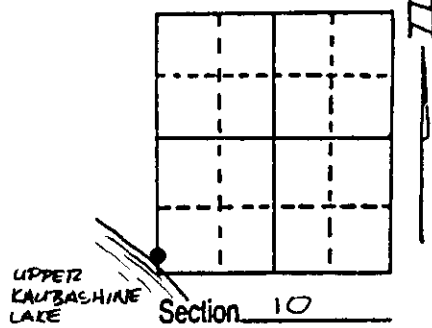
Note: This form is intended and designed to fulfill all requirements of Wisconsin Administrative Code, Chapter A-E 7.08 U.S. Public Land Survey Monument Record (3) (a) (b) (c) (d) (e) (f) (g) (h) (i). An additional sheet may be added if necessary to conform with said requirements.

(a) Corner location: Township 38 North

Range 6 East/West

Town/Village HAZELHURST

County ONEIDA



(b) (f) (g) (h) Description of monument found at this corner and if it was accepted, state all evidence (material, testimonial, occupational, plats, records, other monuments) used as a basis for accepting. If not accepted or if nothing was found, state evidence used as basis for establishing location. If reestablished through lost corner proportionate methods, indicate all monuments, distances and directions used to establish. Indicate type of monument found or set and sign post.

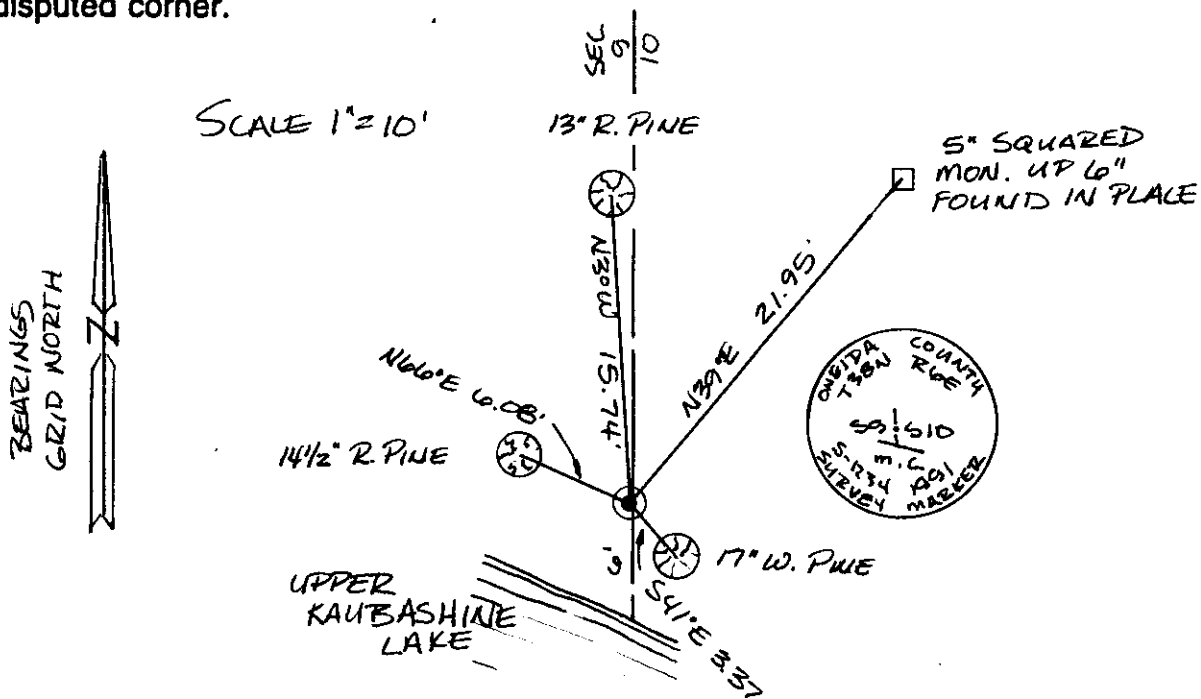
Sept. 28th, 1863 - Alexander Anderson, Deputy Surveyor, set Meander Corner witnessed by two bearing trees: a Y. Pine bearing N66°E, 28 links; and a Y. Pine bearing N5°W, 19 links.

May 19th, 1902 - D. H. Vaughn, Surveyor, found the original post and bearing tree, a 16" Y. Pine stump bearing N5°W, 19 links. Parties agreed to replace post with iron pipe.

Dec. 7th, 1944 - E. F. Kowalke, Reg. Land Surveyor, set transit on line between original 1/4 corner and Vaughn's 1/8 corner extended line south of 1/8 corner. var. 3°E to lake and set iron rod for meander corner (distance from 1/8 corner to Meander Corner = 17.86) marked a 12" W. Pine bearing S30½°E, 2.0'.

Oct. 8th, 1991 - James D. Rein, Reg. Land Surveyor, recovered a 1" dia. axle referenced by a 17" W. Pine bearing S41°E, 3.37'. Replaced axle with a capped 2" dia. X 30" long flange bottom aluminum monument, made new reference ties as shown in plan view and set plastic sign post 1 foot southwest of corner.

(c) (d) (e) Plan view of corner with ties to at least 4 witness monuments. If in disagreement with previously established corner, show the distances between the two corners and also indicate the ties to the disputed corner.



(i) I, James D. Rein, Registered Land Surveyor No. 1234  
 (type or print name) certify that the corner location on this record was determined by me or under my direction and control and that this U.S. Public Land Survey Monument Record is correct and complete to the best of my knowledge and belief.

James D. Rein  
 Signature

Date



3806090300  
 Stamp

Index No. H5 13