

# U.S. PUBLIC LAND SURVEY MONUMENT RECORD

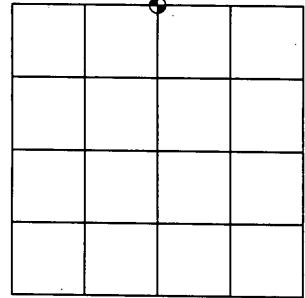
Note: This form is intended and designed to fulfill all requirements of the Wisconsin Administrative Code, Chapter A-E 7.08 U.S. Public Land Monument Record (3)(a)(b)(c)(d)(e)(f)(g)(h)(i). An additional sheet may be added if necessary to conform with said requirements.

**(a) CORNER LOCATION:**

North quarter corner of Section 15  
 Township 38 North  
 Range 6 East  
 Town of Hazelhurst  
 County of Oneida

**COORDINATES**

North: 220320.3393  
 East: 183919.2971  
 Control Station: O.C. #208  
 Latitude: 45°48'16.32024"N  
 Longitude: 89°43'24.71396"W  
 Datum: NAD 83 (1991) Method: RTK



SECTION 15

**(b) HISTORY OF ORIGINAL CORNER ESTABLISHMENT**

Original Surveyor: Alexander Anderson  
 Date of Survey: Commenced - September, 1863  
 Completed - October, 1863

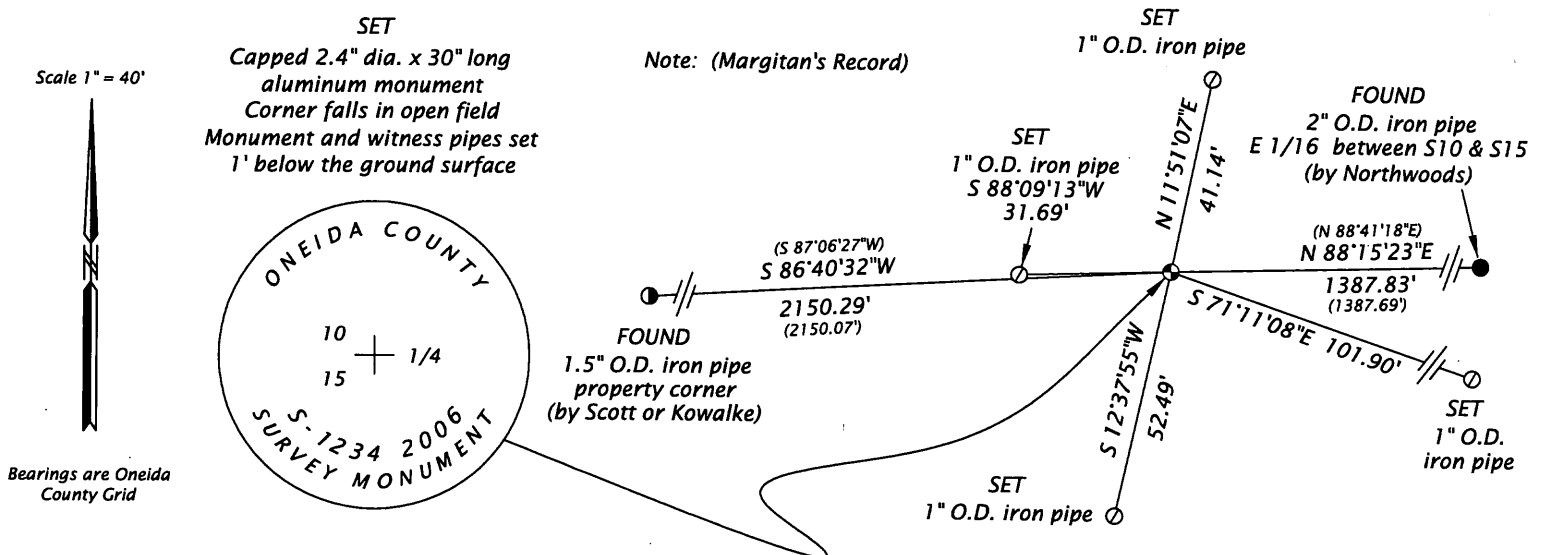
Original B.T.'S: Black Oak 15" N36°W 18 links  
 Black Oak 6" S63°W 13 links

**(f)(g)(h) DESCRIPTION OF MONUMENT FOUND AT THIS CORNER AND IF IT WAS ACCEPTED, STATE ALL EVIDENCE (MATERIAL, TESTIMONIAL, OCCUPATIONAL, PLATS, RECORDS, OTHER MONUMENTS) USED AS A BASIS FOR ESTABLISHING LOCATION. IF NOT ACCEPTED OF IF NOTHING WAS FOUND, STATE EVIDENCE USED AS BASIS FOR ESTABLISHING LOCATION. IF REESTABLISHED THROUGH LOST CORNER PROPORTIONATE METHODS, INDICATE ALL MONUMENTS, DISTANCES AND DIRECTIONS USED TO ESTABLISH. INDICATE TYPE OF MONUMENT AND SIGN POST FOUND OR SET.**

November 8th, 1974- John B. Margitan, RLS No. 1017, on map of survey No. C299 recorded and filed at the Oneida County Land Records office indicates a found 2" IRON PIPE & WOOD POST set by L.W. SCOTT OR E.F. KOWALKE.

May 3rd, 2006- James D. Rein, RLS No. 1234, search for evidence of corner and find none as area is now an active farm field. I reestablish the corner using Margitan's record interior angle and prorated distances between the E 1/16th corner between Sections 10 & 15, and a property corner to the west. Set Oneida County Aluminum monument and accessories as shown in plan.

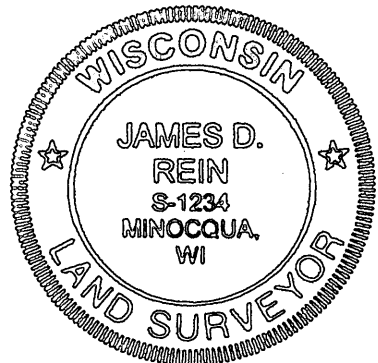
**(c)(d)(e) PLAN VIEW OF CORNER WITH TIES TO AT LEAST 4 WITNESS MONUMENTS. IF IN DISAGREEMENT WITH PREVIOUSLY ESTABLISHED CORNER, SHOW THE DISTANCE BETWEEN THE TWO CORNERS AND ALSO INDICATE THE TIES TO THE DISPUTED CORNER.**



(i) I, JAMES D. REIN, REGISTERED LAND SURVEYOR NO. S-1234 HEREBY CERTIFY THAT THE CORNER LOCATION ON THIS RECORD WAS DETERMINED BY ME OR UNDER MY DIRECTION AND CONTROL AND THAT THIS U.S. PUBLIC LAND SURVEY MONUMENT RECORD IS CORRECT AND COMPLETE TO THE BEST OF MY KNOWLEDGE AND BELIEF

*[Handwritten Signature]*  
 SIGNATURE

5/03/06  
 DATE  
 38067002a  
 38061002c



INDEX NO. J-15

REGISTER OF DEEDS OFFICE  
ONEIDA COUNTY, WIS.

**FILED**  
JUN 4 2008

At \_\_\_\_\_ O'Clock \_\_\_\_\_ M  
**THOMAS H. LEIGHTON**  
REGISTER OF DEEDS

