

U.S. PUBLIC LAND SURVEY MONUMENT RECORD

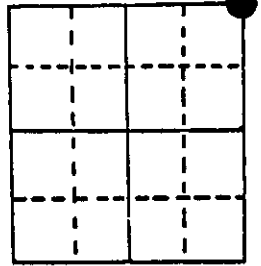
Note: This form is intended and designed to fulfill all requirements of Wisconsin Administrative Code, Chapter A-E 5.02, U.S. Public Land Survey Monument Record (3) (a) (b) (c) (d) (e) (f) (g) (h) (i). An additional sheet may be added if necessary to conform with said requirements.

(a) Corner location: Township 38 North

Range 6 East

Town Hazelhurst

County Oneida



Section 14

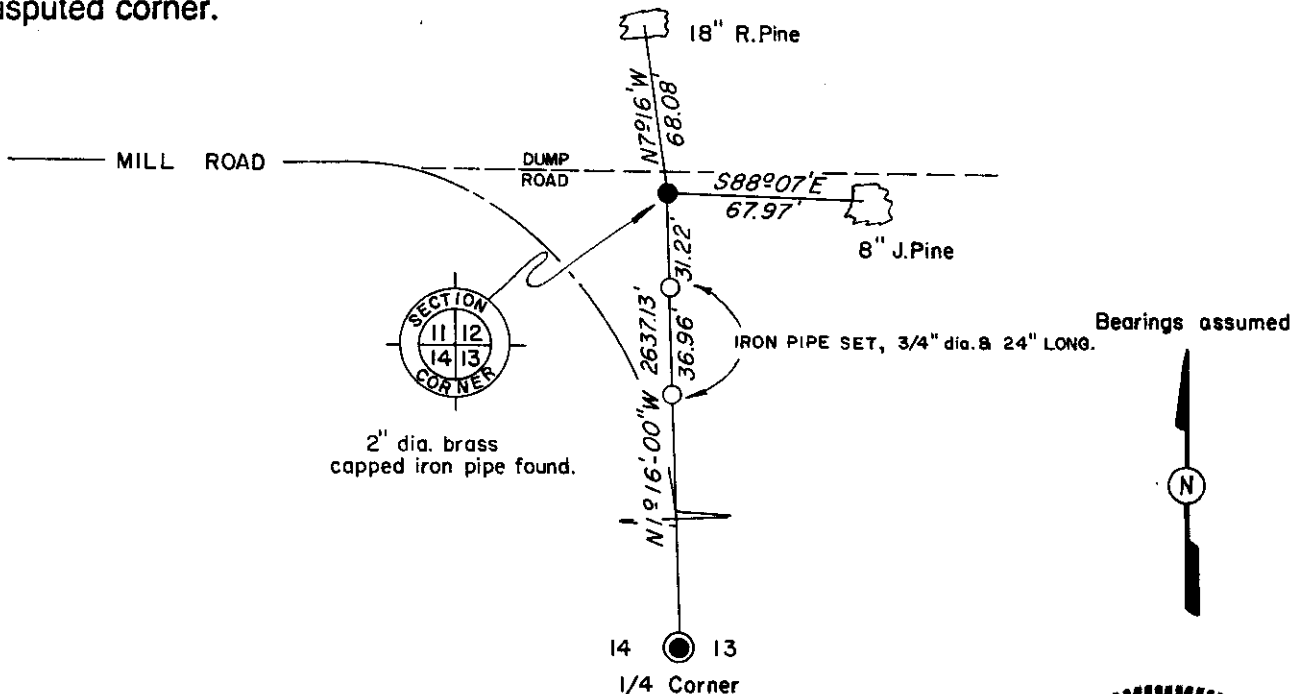
(b) (f) (g) (h) Description of monument found at this corner and if it was accepted, state all evidence (material, testimonial, occupational, plats, records, other monuments) used as a basis for accepting. If not accepted or if nothing was found, state evidence used as basis for establishing location. If reestablished through lost corner proportionate methods, indicate all monuments, distances and directions used to establish.

Sept. 1863 - Alexander Anderson, Deputy Surveyor, set original post corner to sections 11, 12, 13 and 14. Original bearing trees: Aspen 12" N45.5°E, 10 lks.; W. Pine 20, S19°W, 38 lks.

April, 1979 - Herbert Moore subdivides and maps section 14. His C.S.M. indicates a brass capped 2 1/2" iron pipe for section corner.

May 18, 1984 - Jerome N. Kraemer, Reg. Land Surveyor, finds 2" dia. and 5' long galv. iron pipe with brass cap stamped T38N, R6E, 11, 12, 14, 13, 11-1-78, S407. Corner protrudes up 3" above ground level and is bent over towards the east. Corner is on east edge of dump road. Dug corner up, straightened pipe and reset in same position 2" below ground level. Found 2" dia. iron pipe S65°-26'E, 4.19 feet and a 1 1/4" dia. iron pipe S22°-00'E, 5.14 feet. Blazed, scribed and set nail in bearing trees as shown in plan view below. Set 2 reference iron pipes.

(c) (d) (e) Plan view of corner with ties to at least 4 witness monuments. If in disagreement with previously established corner, show the distances between the two corners and also indicate the ties to the disputed corner.



(i) I, Jerome N. Kraemer, Registered Land Surveyor No. S-1448
 (type or print name) certify that the corner location on this record was determined by me or under my direction and control and that this U.S. Public Land Survey Monument Record is correct and complete to the best of my knowledge and belief.

Jerome N. Kraemer
 Signature

June 12, 1984
 Date



Index No. J-21

3806110000