

U.S. PUBLIC LAND SURVEY MONUMENT RECORD

REGISTER OF DEEDS OFFICE
ONEIDA COUNTY
FILED

Note: This form is intended and designed to fulfill all requirements of the Wisconsin Administrative Code, Chapter A-E 7.08 U.S. Public Land Monument Record (3)(a)(b)(c)(d)(e)(f)(g)(h)(i). An additional sheet may be added if necessary to conform with said requirements.

JUN 01 2017

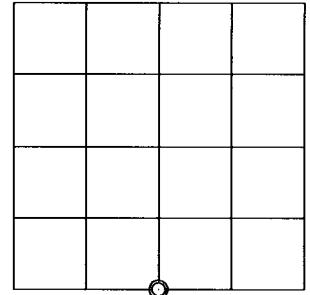
(a) CORNER LOCATION:
South Quarter Corner of Section 12
Township 38 North
Range 6 East
Town of Hazelhurst
County of Oneida

WISCRS - Oneida County
North: 220382.845 USft
East: 194458.702 USft
Latitude: 45° 47'25.32750" N
Longitude: 89° 41' 01.52366" W
Datum: NAD 83(2011)
GNSS Method: RTK - Direct
GNSS Control: WISCORS VRS
Record North: 220382.932 USft
Record East: 194458.631 USft
Record Datum: NAD 83(1991)

AT _____ O'CLOCK _____ M
KYLE J. FRANSON
REGISTER OF DEEDS

(RECORDING AREA)

SECTION 12



(b) HISTORY OF ORIGINAL CORNER ESTABLISHMENT

Original Surveyor: Alexander Anderson
Date of Survey: Commenced September 28th, 1863
Completed October 5th, 1863
Original B.T.'S: Birch 9" S 27-1/2°E, 8 lks.
Birch 10" N 38-1/2°W 25 lks.

(f)(g)(h) DESCRIPTION OF MONUMENT FOUND AT THIS CORNER AND IF IT WAS ACCEPTED, STATE ALL EVIDENCE (MATERIAL, TESTIMONIAL, OCCUPATIONAL, PLATS, RECORD, OTHER MONUMENTS) USED AS A BASIS FOR ESTABLISHING LOCATION. IF NOT ACCEPTED OR IF NOTHING WAS FOUND, STATE EVIDENCE USED AS BASIS FOR ESTABLISHING LOCATION. IF REESTABLISHED THROUGH LOST CORNER PROPORTIONATE METHODS, INDICATE ALL MONUMENTS, DISTANCES AND DIRECTIONS USED TO ESTABLISH. INDICATE TYPE OF MONUMENT AND SIGN POST FOUND OR SET.

May 12, 1925 - ? Vaughn, Surveyor (Old Field Book 38, page 32) survey in Section 12, T38N, R6E, "Found post and stp. of NW orig. New W. Pine stp. 16" South, 38 1/4 links" or 25.25 feet.

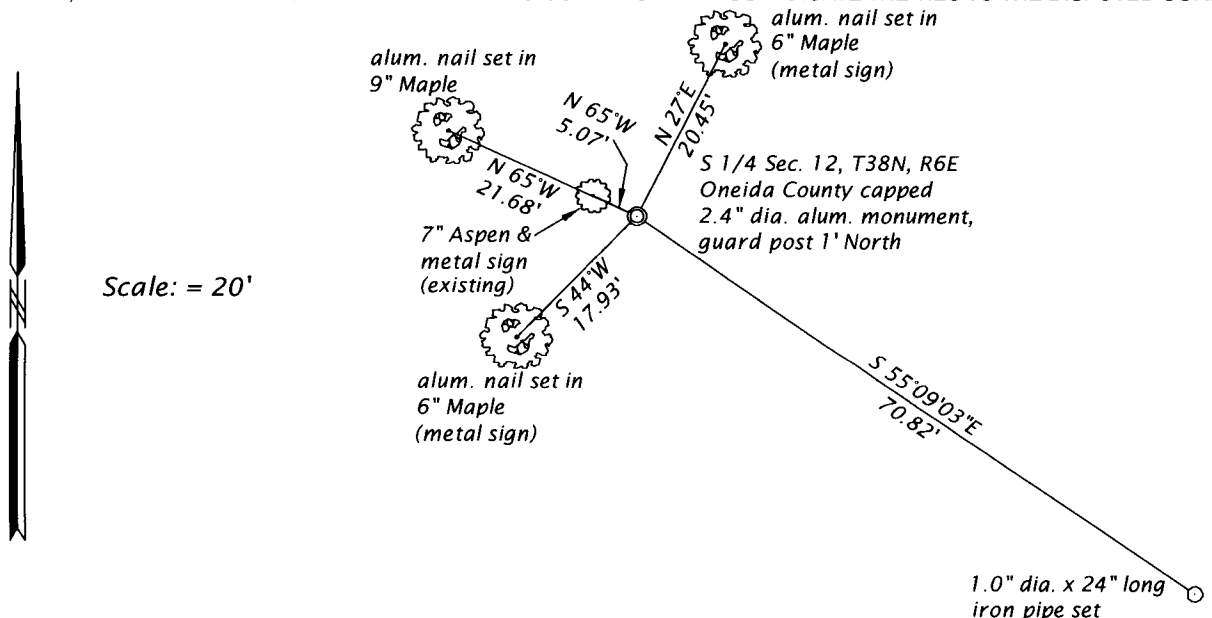
February 12-21, 1947 - Walter Hennig, Surveyor, (Hennig Field Book 4, pages 18 thru 22) subdivision of Section 13, T38N, R6E, found ? for corner, referenced by "old Pine stp. B.T. South, 25.4' feet". He notes "S 1/4 Sec. 12 apparently is not an original point. Found old BT stp at this location. (not orig.) (origin unknown)". However, he decided to accept the corner, set a new oak post and made BT's: Oak 7" S19°W, 17.6 feet and a oak 7" N72°E, 18.8 feet.

April 4, 2000 - David F. McMullen, RLS No. 1340, map of survey for subdivision of Section 12, T38N, R6E, filed as C1688 in county surveyor's office describes the corner monumented by a 1" iron pipe found in place.

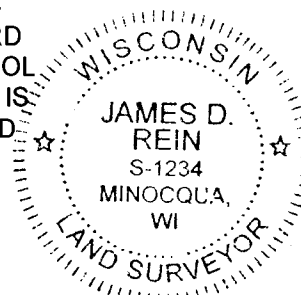
January 4, 2017 - James D. Rein, PLS No. 1234, we recovered a 1 3/8" o.d. iron pipe. I accept the iron pipe as a perpetuation of the original corner position, based upon my analysis of a combination of county published section corner coordinates, our prior work in Section 13, the McMullen survey and the Hennig record. We replaced the iron pipe with an Oneida County capped 2.4" dia. x 30" long aluminum monument and made reference ties as shown in the plan.

The coordinate value shown has been verified by at least one of the following methods: 1) comparison to a previously GPS determined published value; 2) the value is the average of two or more GPS observations at a markedly different time; 3) one or more distances were measured back to the GPS observed corner from temporary GPS observed offset locations.

(c)(d)(e) PLAN VIEW OF CORNER WITH TIES TO AT LEAST 4 WITNESS MONUMENTS. IF IN DISAGREEMENT WITH PREVIOUSLY ESTABLISHED CORNER, SHOW THE DISTANCE BETWEEN THE TWO CORNERS AND ALSO INDICATE THE TIES TO THE DISPUTED CORNER.



(i) I, JAMES D. REIN, PROFESSIONAL LAND SURVEYOR NO. S-1234 HEREBY CERTIFY THAT THE CORNER LOCATION ON THIS RECORD WAS DETERMINED BY ME OR UNDER MY DIRECTION AND CONTROL AND THAT THIS U.S. PUBLIC LAND SURVEY MONUMENT RECORD IS CORRECT AND COMPLETE TO THE BEST OF MY KNOWLEDGE AND BELIEF.



[Handwritten Signature]
SIGNATURE

5-24-17
DATE

INDEX NO. J-23
3806120020