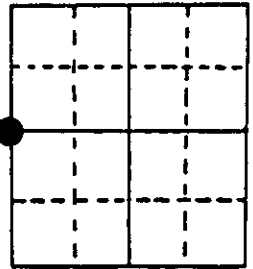
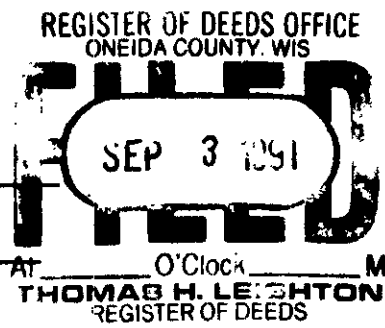


U.S. PUBLIC LAND SURVEY MONUMENT RECORD

Note: This form is intended and designed to fulfill all requirements of Wisconsin Administrative Code, Chapter A-E 7.08 U.S. Public Land Survey Monument Record (3) (a) (b) (c) (d) (e) (f) (g) (h) (i). An additional sheet may be added if necessary to conform with said requirements.

(a) Corner location: Township 38 North
 Range 7 East/West
 Town/City/Village Lake Tomahawk
 County Oneida

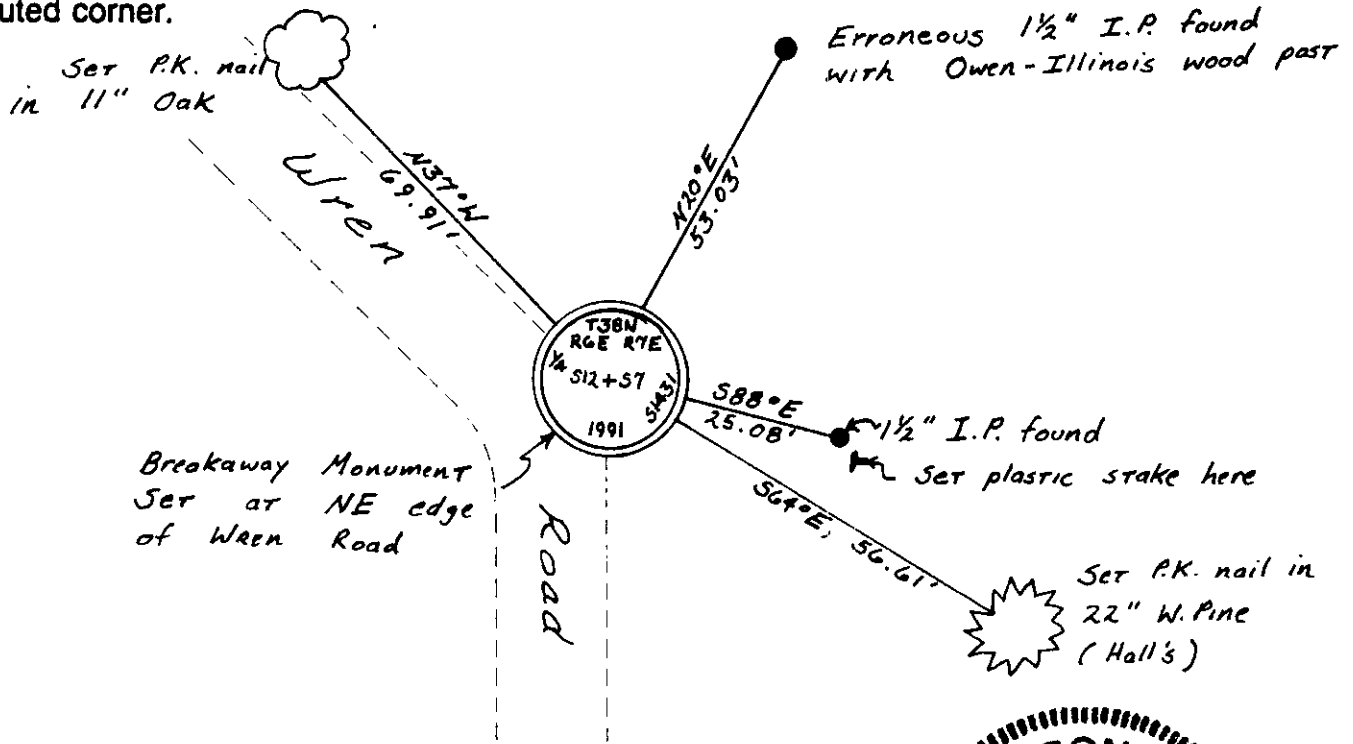


Section 7

(b) (f) (g) (h) Description of monument found at this corner and if it was accepted, state all evidence (material, testimonial, occupational, plats, records, other monuments) used as a basis for accepting. If not accepted or if nothing was found, state evidence used as basis for establishing location. If reestablished through lost corner proportionate methods, indicate all monuments, distances and directions used to establish. Indicate type of monument found or set and sign post.

- September 1860: Alfred Millard set original corner post. He tied to the following trees:
 12" W. Birch N84°E, 26 lks.
 8" B. Oak N34°W, 8 lks.
- 1936: H.C. Hall set an iron rod at the corner by single proportion. He tied to the following bearing trees:
 4" Oak N34°30'W 18.2'
 12" W. Pine S64°30'E 55.1'
- 1966: Northwoods Surveyors found and accepted Hall's iron rod and W. Pine bearing tree.
- 1991: I replaced Hall's iron rod with a 4" diam., 31" long Bernsten Breakaway monument. (4" below grade) and plastic stake.

(c) (d) (e) Plan view of corner with ties to at least 4 witness monuments. If in disagreement with previously established corner, show the distances between the two corners and also indicate the ties to the disputed corner.



(i) I, Charles E. Winkler
 (type or print name) certify that the corner location on this record was determined by me or under my direction and control and that this U.S. Public Land Survey Monument Record is correct and complete to the best of my knowledge and belief.

Charles E. Winkler 8-19-91
 Signature Date



Stamp 3806122000

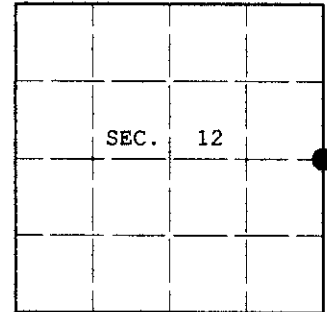
Index No. C-1

U.S. PUBLIC LAND SURVEY MONUMENT RECORD

Note: This form is intended and designed to fulfill all requirements of Wisconsin Administrative Code, Chapter A-E 7.08 U.S. Public Land Survey Monument Record (3) (a) (b) (c) (d) (e) (f) (g) (h) (i). An additional sheet may be added if necessary to conform with said requirements.

(a) CORNER LOCATION:
 1/4 Corner common to Secs. 7 and 12
 Township 38 North
 Range 6 & 7 East, 4th Principal Meridian
 Town of Hazelhurst

Plane Coordinates
 X:
 Y:
 Datum:
 County of Oneida



(b) HISTORY OF ORIGINAL CORNER ESTABLISHMENT

Original Surveyor: Alfred Millard
 Date of Survey: Commenced: Sept. 1860
 Completed: Sept. 1860

Original Accessories:

W. Birch 12 N.84°E. 26 lks.
 B. Oak 8 N.34°W. 8 lks.

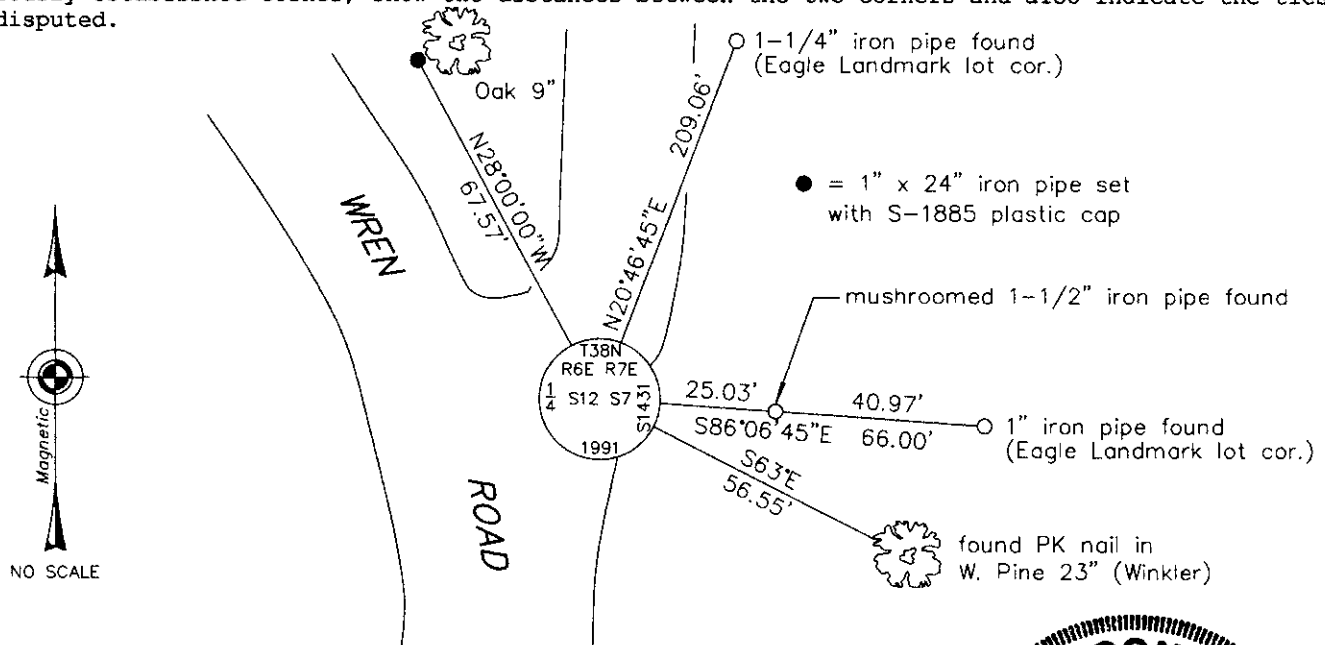
(b) (f) (g) (h) Description of monument found at this corner and if it was accepted, state all evidence (material, testimonial, occupational, plats, records, other monuments) used as a basis for accepting. If not accepted or if nothing was found, state evidence used as basis for establishing location. If reestablished through lost corner proportionate methods, indicate all monuments, distances and directions used to establish. Indicate type of monument and sign post found or set.

This is a perpetuation of a previous USPLS Monument Record by Charles E. Winkler dated August 19, 1991. See the previous monument record for the complete history pertaining to this corner. This work is being done to preserve the corner location prior to town road reconstruction.

May 14, 2003: I found and accepted Winkler's aluminum breakaway monument, 4 ins. diam., 8 ins. below the existing pavement. Winkler's NW tree and NE iron pipe are now gone. I established accessories as shown below and found a plastic sign post adjacent to the 1-1/2 ins. diam. iron pipe.

I set a Berntsen "Survey Mark" nail at the corner location after the paving work was complete. It appears the aluminum monument is undisturbed under the new pavement.

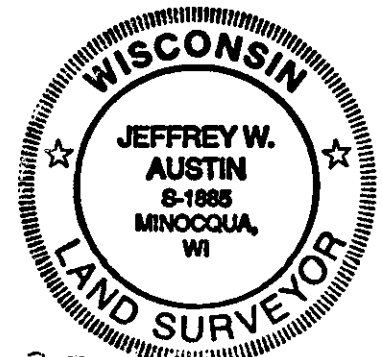
(c) (d) (e) Plan view of corner with ties to at least 4 witness monuments. If in disagreement with previously established corner, show the distances between the two corners and also indicate the ties to the disputed.



(i) I, Jeffrey W. Austin, Registered Land Surveyor No. S-1885, hereby certify upon honor that the corner location on this record was determined by me or under my direction and control and that this U.S. Public Land Survey Monument Record is correct and complete to the best of my knowledge and belief.

Jeffrey W. Austin #S-1885

SEPT. 15, 2003
 Date



3806122000