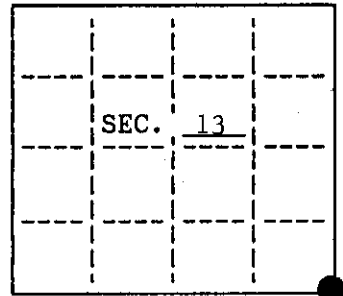


**U. S. PUBLIC LAND SURVEY MONUMENT RECORD**

Note: This form is intended and designed to fulfill all requirements of Wisconsin Administrative Code, Chapter A-8 7.08 U.S. Public Land Survey Monument Record (3)(a)(b)(c)(d)(e)(f)(g)(h)(i). An additional sheet may be added if necessary to conform with said requirements.

(a) CORNER LOCATION: State Plane Coordinates  
 SE Sec. corner of Sec. 13 X \_\_\_\_\_  
 Township 38 North Y \_\_\_\_\_  
 Range 6 East Datum Base \_\_\_\_\_  
 Town/~~XXX~~ Hazelhurst County of Oneida



(b) HISTORY OF ORIGINAL CORNER ESTABLISHMENT

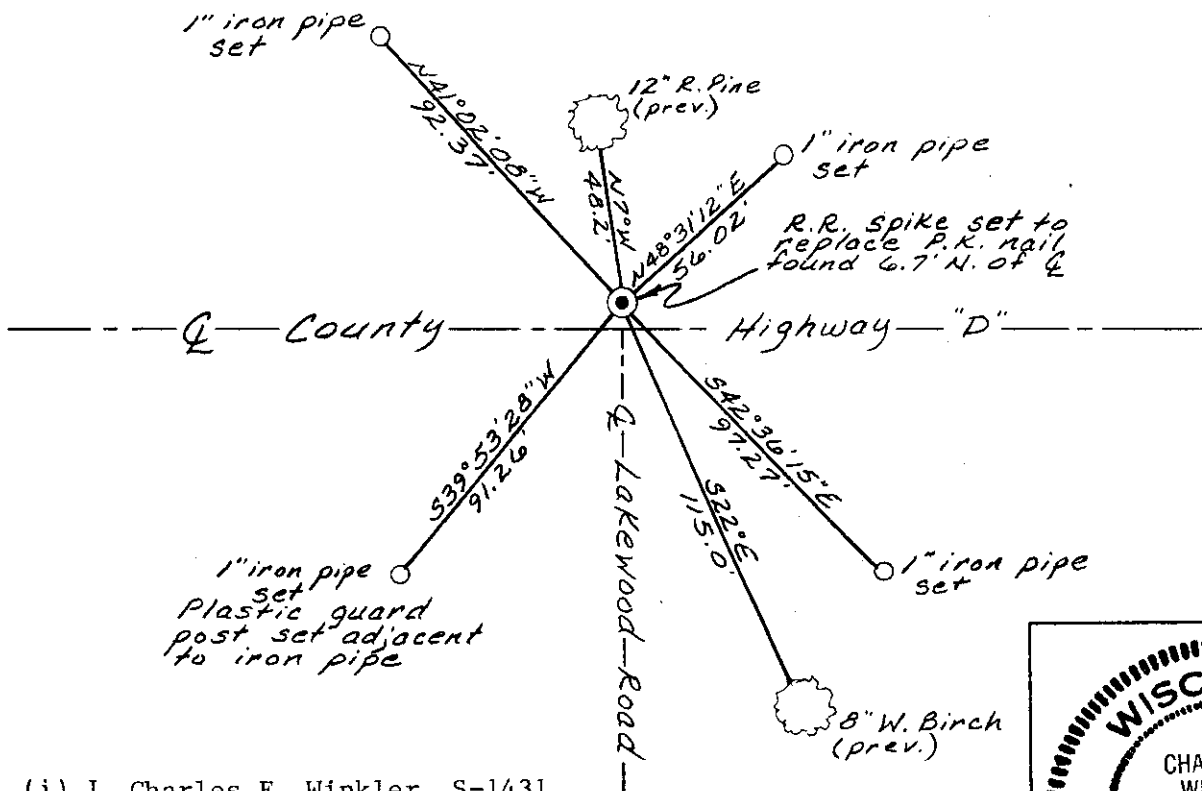
Original Surveyor: Alfred Millard  
 Date of Survey: Commenced September 1860  
 Completed September 1860

Original B.T.'S  
 12" W. Pine S47°E 8 lks  
 12" W. Pine S39°W 5 lks  
 16" W. Pine N24°W 27 lks  
 8" W. Pine N14°E 38 lks

(b)(f)(g)(h) Description of monument found at this corner and if it was accepted, state all evidence (material, testimonial, occupational, plats, records, other monuments) used as a basis for accepting. If not accepted or if nothing was found, state evidence used as basis for establishing location. If reestablished through lost corner proportionate methods, indicate all monuments, distances and directions used to establish. Indicate type of monument and sign post found or set.

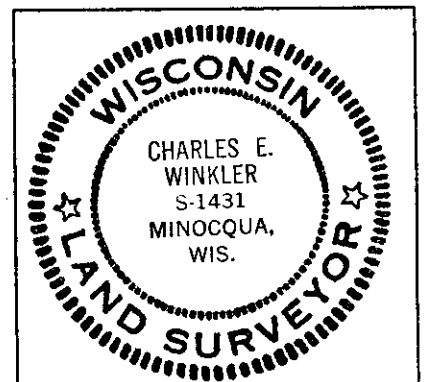
- 1947 - Henning's notes indicate he was told by Mr. Wurst (local resident) "that iron pipe was once set on North R.O.W. line of road running E-W and in line with  $\mathcal{C}$  of road running South. Could not find iron pipe." Henning ran line south from NE Section corner through stumps south of Temp. E $\frac{1}{4}$ , Section 13 to road and set temp. Section Corner. He states he recovered a "Brass-cap U.S. Land Office Survey Monument 1 ft. below blacktop in center of roads."
- 1928 - DNR records finding a G.L.O. Brass-cap; they made 4 BT's; Later the DNR records all BT's and Mon. gone due to Hwy construction.
- 1996 - I found and accepted a P.K. nail 6.7' north of Hwy. "D"  $\mathcal{C}$  and in the  $\mathcal{C}$  of Lakewood Road to the south. Two previous BT's were also present. In preparation of Hwy. reconstruction, I witnessed said PK nail with 4 iron pipes, and after the reconstruction was completed, I returned and set a RR spike to mark the corner position using the previous set iron pipes.

(c)(d)(e) Plan view of corner with ties to at least 4 witness monuments. If in disagreement with previously established corner, show the distances between the two corners and also indicate the ties to the disputed.



(i) I, Charles E. Winkler S-1431 hereby certify that the corner location on this record was determined by me or under my direction and control and that this U.S. Public Land Survey Monument Record is correct and complete to the best of my knowledge and belief.

Charles E. Winkler 11-29-96  
 Signature Foltz and Associates, Inc. Date



INDEX NO. N-25

3806130000

OCT 30 2017

AT \_\_\_\_\_ O'CLOCK \_\_\_\_\_ M  
KYLE J. FRANSON  
REGISTER OF DEEDS

# U.S. PUBLIC LAND SURVEY MONUMENT RECORD

Note: This form is intended and designed to fulfill all requirements of the Wisconsin Administrative Code, Chapter A-E 7.08 U.S. Public Land Monument Record (3)(a)(b)(c)(d)(e)(f)(g)(h)(i). An additional sheet may be added if necessary to conform with said requirements.

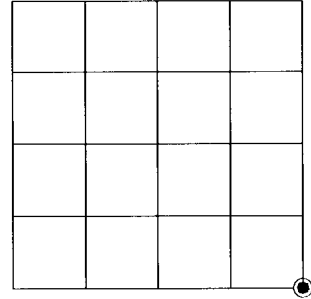
(a) CORNER LOCATION:

Southeast Corner of Section 13  
Township 38 North  
Range 6 East  
Town of Hazelhurst  
County of Oneida

North:  
East:  
Datum:  
GNSS Method:  
GNSS Control:

(RECORDING AREA)

SECTION 13



(b) HISTORY OF ORIGINAL CORNER ESTABLISHMENT

Original Surveyor:  
Date of Survey: Commenced \_\_\_\_\_  
Completed \_\_\_\_\_  
Original B.T.'S \_\_\_\_\_

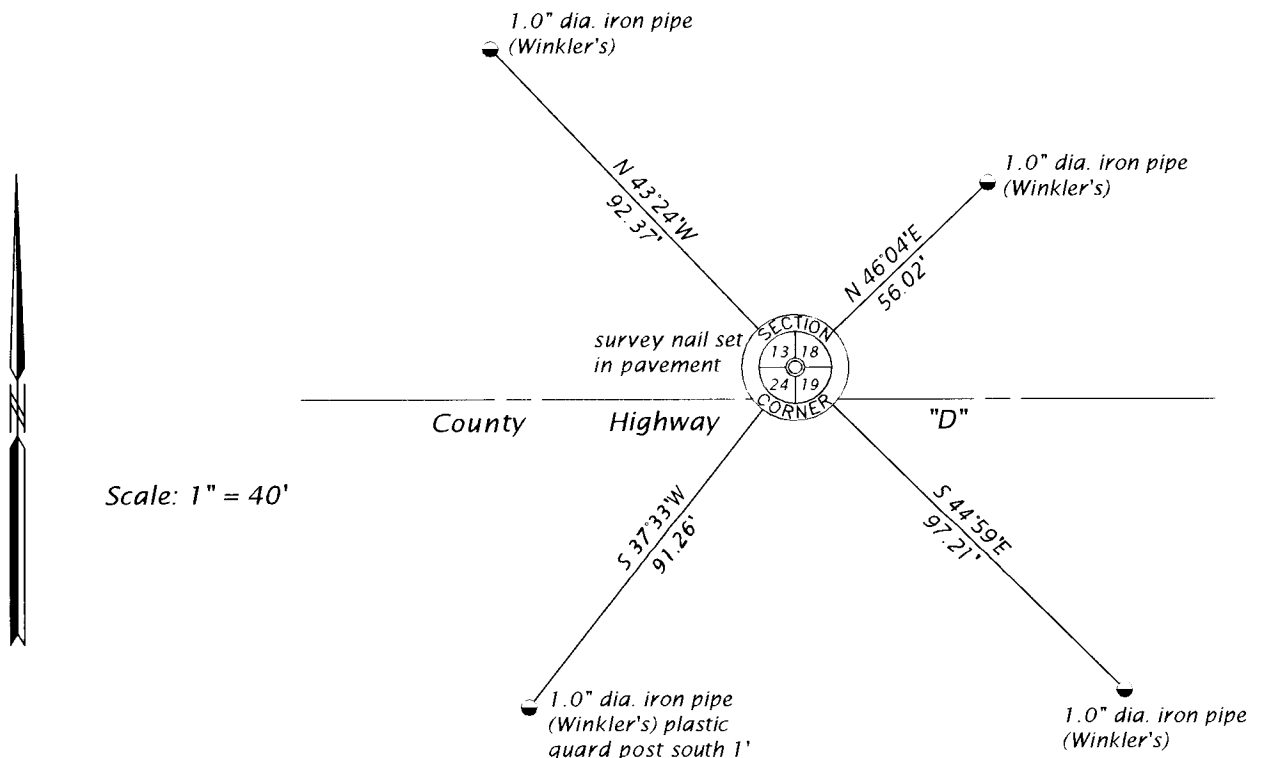
*SEE PREVIOUS U.S.P.L.S. MONUMENT  
RECORD DATED NOVEMBER 29, 1996.*

(f)(g)(h) DESCRIPTION OF MONUMENT FOUND AT THIS CORNER AND IF IT WAS ACCEPTED, STATE ALL EVIDENCE (MATERIAL, TESTIMONIAL, OCCUPATIONAL, PLATS, RECORD, OTHER MONUMENTS) USED AS A BASIS FOR ESTABLISHING LOCATION. IF NOT ACCEPTED OR IF NOTHING WAS FOUND, STATE EVIDENCE USED AS BASIS FOR ESTABLISHING LOCATION. IF REESTABLISHED THROUGH LOST CORNER PROPORTIONATE METHODS, INDICATE ALL MONUMENTS, DISTANCES AND DIRECTIONS USED TO ESTABLISH. INDICATE TYPE OF MONUMENT AND SIGN POST FOUND OR SET.

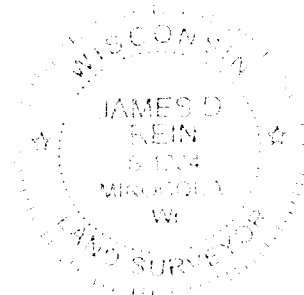
This is a perpetuation of a previous USPLS Monument Record by Charles E. Winkler, RLS, dated November 29, 1996, and filed in the office of the Oneida County Register of Deeds. A complete history of the corner can be found on the previous monument record. I accept the previous location as a true and faithful perpetuation or reestablishment of the original corner location and further perpetuate it as follows.

September 19, 2017, due to highway work, Winkler's railroad spike was removed. James D. Rein, PLS No. S-1234, we set a survey nail in the pavement using Winkler's previous witnesses - see below for updated witnesses.

(c)(d)(e) PLAN VIEW OF CORNER WITH TIES TO AT LEAST 4 WITNESS MONUMENTS. IF IN DISAGREEMENT WITH PREVIOUSLY ESTABLISHED CORNER, SHOW THE DISTANCE BETWEEN THE TWO CORNERS AND ALSO INDICATE THE TIES TO THE DISPUTED CORNER.



(i) I, JAMES D. REIN, PROFESSIONAL LAND SURVEYOR NO. S-1234 HEREBY CERTIFY THAT THE CORNER LOCATION ON THIS RECORD WAS DETERMINED BY ME OR UNDER MY DIRECTION AND CONTROL AND THAT THIS U.S. PUBLIC LAND SURVEY MONUMENT RECORD IS CORRECT AND COMPLETE TO THE BEST OF MY KNOWLEDGE AND BELIEF.



*[Handwritten Signature]*  
SIGNATURE

10-04-17  
DATE

INDEX NO. N - 25  
3806130000