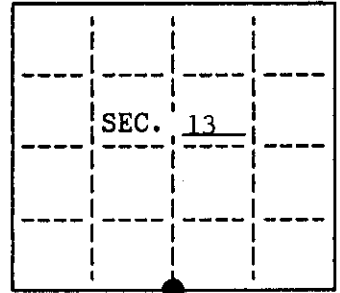


U. S. PUBLIC LAND SURVEY MONUMENT RECORD

Note: This form is intended and designed to fulfill all requirements of Wisconsin Administrative Code, Chapter A-8 7.08 U.S. Public Land Survey Monument Record (3)(a)(b)(c)(d)(e)(f)(g)(h)(i). An additional sheet may be added if necessary to conform with said requirements.

(a) CORNER LOCATION: State Plane Coordinates
S $\frac{1}{4}$ corner of Sec. 13 X _____
 Township 38 North Y _____
 Range 6 East Datum Base _____
 Town/City Hazelhurst County of Oneida

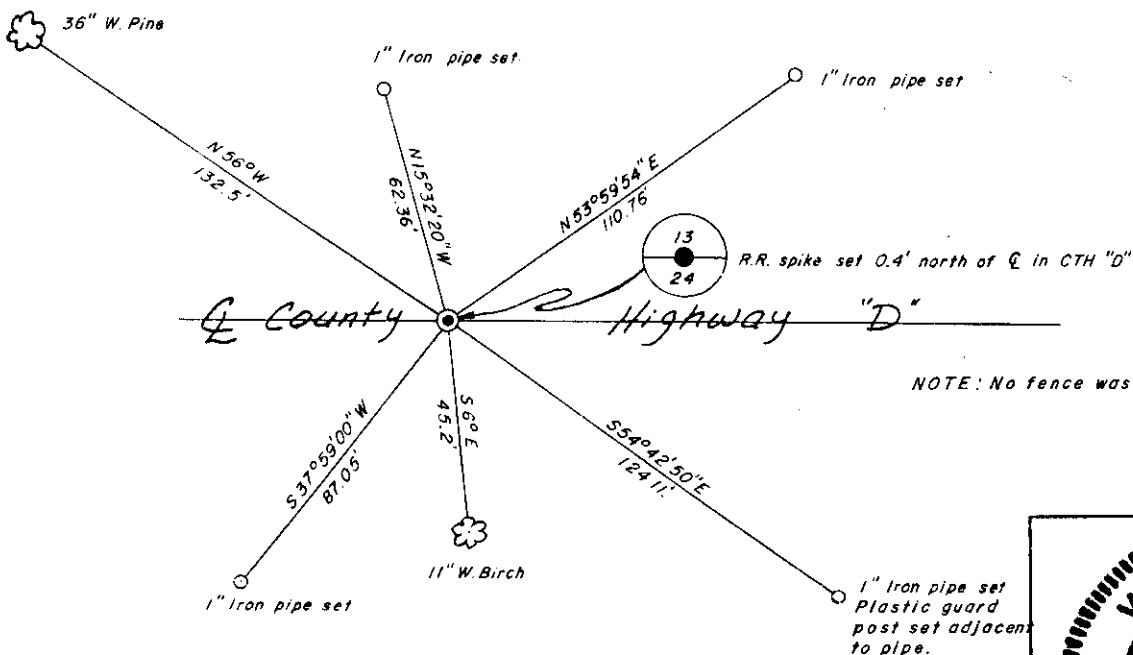


(b) HISTORY OF ORIGINAL CORNER ESTABLISHMENT
 Original Surveyor: Alex Anderson Original B.T.'s
 Date of Survey: Commenced September 1863 12" W. Pine N13 $\frac{1}{2}$ °W, 13 lks
 Completed September 1863 10" W. Pine S63 $\frac{1}{2}$ °E, 10 lks

(b)(f)(g)(h) Description of monument found at this corner and if it was accepted, state all evidence (material, testimonial, occupational, plats, records, other monuments) used as a basis for accepting. If not accepted or if nothing was found, state evidence used as basis for establishing location. If reestablished through lost corner proportionate methods, indicate all monuments, distances and directions used to establish. Indicate type of monument and sign post found or set.

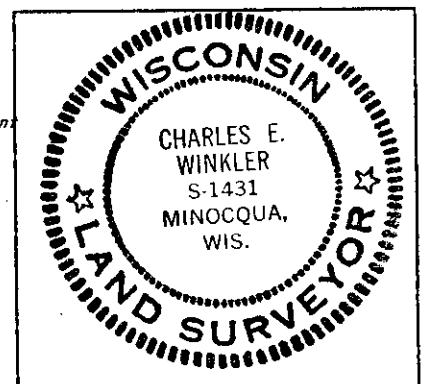
- 1947 - Henning could not find corner and testimony from local residents (Smith Bros.) stated original bearing trees were removed when road was constructed. Mr. Schultz built fence starting at corner and extended south - before road was built. Henning accepted intersection of fence and road centerline for the South $\frac{1}{4}$. Notes do not indicate that he set any monument at corner.
- 1966 - Cameron could not find anything at corner location, but had the W-1/16 corner on the south line. He doubled the distance through the W-1/16 from the SW section corner to position the S $\frac{1}{4}$ of Section 13 and set a P.K. nail in the centerline of the road. He made the following B.T.'s - 8" W. Birch, S9°E, 45.1' and 16" W. Pine, N63°W, 132.5'.
- 1996 - I found a masonry nail 0.40' north of centerline and Cameron's two bearing trees. I accepted this for Cameron's S $\frac{1}{4}$ and set four pipes to witness corner. After Hwy "D" was reconstructed, I returned and set a railroad spike at corner location from previous iron pipes.

(c)(d)(e) Plan view of corner with ties to at least 4 witness monuments. If in disagreement with previously established corner, show the distances between the two corners and also indicate the ties to the disputed.



(i) I, Charles E. Winkler S-1431 hereby certify that the corner location on this record was determined by me or under my direction and control and that this U.S. Public Land Survey Monument Record is correct and complete to the best of my knowledge and belief.

Charles E. Winkler 11-29-96
 Signature Foltz and Associates, Inc. Date



INDEX NO. N-23

3806130020

OCT 30 2017

AT _____ O'CLOCK _____ M
KYLE J. FRANSON
REGISTER OF DEEDS

U.S. PUBLIC LAND SURVEY MONUMENT RECORD

Note: This form is intended and designed to fulfill all requirements of the Wisconsin Administrative Code, Chapter A-E 7.08 U.S. Public Land Monument Record (3)(a)(b)(c)(d)(e)(f)(g)(h)(i). An additional sheet may be added if necessary to conform with said requirements.

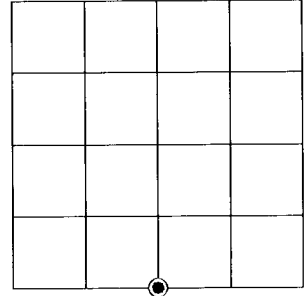
(a) CORNER LOCATION:

South Quarter Corner of Section 13
Township 38 North
Range 6 East
Town of Hazelhurst
County of Oneida

North:
East:
Datum:
GNSS Method:
GNSS Control:

(RECORDING AREA)

SECTION 13



(b) HISTORY OF ORIGINAL CORNER ESTABLISHMENT

Original Surveyor:
Date of Survey: Commenced _____
Completed _____
Original B.T.'S _____

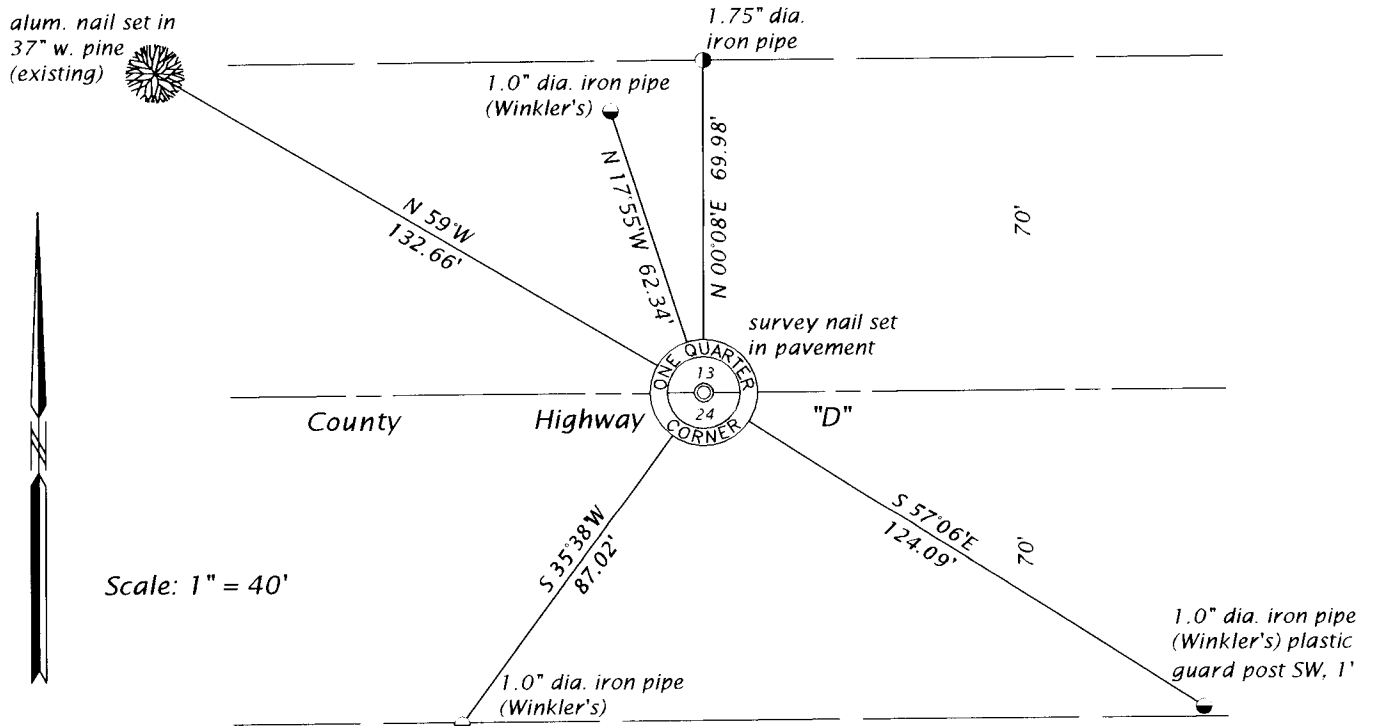
**SEE PREVIOUS U.S.P.L.S. MONUMENT
RECORD DATED NOVEMBER 29, 1996.**

(f)(g)(h) DESCRIPTION OF MONUMENT FOUND AT THIS CORNER AND IF IT WAS ACCEPTED, STATE ALL EVIDENCE (MATERIAL, TESTIMONIAL, OCCUPATIONAL, PLATS, RECORD, OTHER MONUMENTS) USED AS A BASIS FOR ESTABLISHING LOCATION. IF NOT ACCEPTED OR IF NOTHING WAS FOUND, STATE EVIDENCE USED AS BASIS FOR ESTABLISHING LOCATION. IF REESTABLISHED THROUGH LOST CORNER PROPORTIONATE METHODS, INDICATE ALL MONUMENTS, DISTANCES AND DIRECTIONS USED TO ESTABLISH. INDICATE TYPE OF MONUMENT AND SIGN POST FOUND OR SET.

This is a perpetuation of a previous USPLS Monument Record by Charles E. Winkler, RLS, dated November 29, 1996, and filed in the office of the Oneida County Register of Deeds. A complete history of the corner can be found on the previous monument record. I accept the previous location as a true and faithful perpetuation or reestablishment of the original corner location and further perpetuate it as follows.

September 14, 2017, due to highway work, Winkler's railroad spike was removed. James D. Rein, PLS No. S-1234, we set a survey nail in the pavement using Winkler's previous witnesses. The northeast witness iron pipe and the birch tree to the south are now gone - see below for updated witnesses.

(c)(d)(e) PLAN VIEW OF CORNER WITH TIES TO AT LEAST 4 WITNESS MONUMENTS. IF IN DISAGREEMENT WITH PREVIOUSLY ESTABLISHED CORNER, SHOW THE DISTANCE BETWEEN THE TWO CORNERS AND ALSO INDICATE THE TIES TO THE DISPUTED CORNER.



(i) I, JAMES D. REIN, PROFESSIONAL LAND SURVEYOR NO. S-1234 HEREBY CERTIFY THAT THE CORNER LOCATION ON THIS RECORD WAS DETERMINED BY ME OR UNDER MY DIRECTION AND CONTROL AND THAT THIS U.S. PUBLIC LAND SURVEY MONUMENT RECORD IS CORRECT AND COMPLETE TO THE BEST OF MY KNOWLEDGE AND BELIEF.

James D. Rein

SIGNATURE

10-04-17

DATE



INDEX NO. N - 23
3806130020