

This form is intended to fulfill the requirements of Chapter A-E7.08 (3)(a) thru (i) U.S. Public Land Survey Monument Location Record, Wisconsin Administrative Code. Use the reverse side of form for continuation.

U.S. PUBLIC LAND SURVEY MONUMENT LOCATION RECORD

USPLS CORNER: WEST 1/4 CORNER SECTION: 18 TOWNSHIP: 38 NORTH RANGE: 7 EAST
 NAME OF WATERWAY FOR M.C. CORNER: N/A SECTION LINE: N/A
 (CITY)(VILLAGE)(TOWN) OF: LAKE TOMAHAWK COUNTY OF: ONEIDA

Description of monument found or placed and all other evidence used as the basis for monument location; including monuments and measurements required if the corner location was reestablished by lost corner proportionate methods. Also indicate name of the original surveyor, original survey date and the corner monument, bearing trees, witness or other reference monuments established, including measured bearing and distance ties, from available survey records.

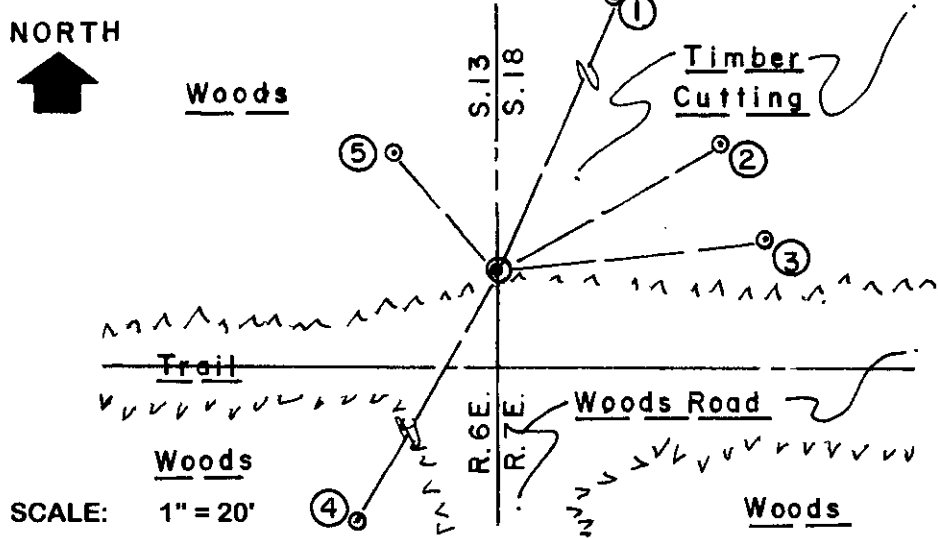
Found and accepted an older 2" dia. galvanized iron pipe monument with stamped WCD brass cap 15" up in crest of rocky roadway fill down to wooded swale North of the corner; also an old rotting 5" square wood marker post tipped 45° and 6" North and a standard white poly 'T' marker post 13" East of the corner monument, which is tipped slightly to the North but very stable, so I left in place for new ties to cap center. Trees painted blue on line North & East of the corner, undoubtedly for timber harvesting underway in NE quadrant. A woods road leads East & South and a woods trail leads West.

In September 1860, Alfred Millard/GLO set a wood post as the original corner and noted OBTs: 20" Pw N46°E 8 links, now probable rotted 24" high 22"+- dia. pine stump remains N60°E 5 feet+/- with no markings as face toward corner badly decayed; and a 9" Sugar N19°W 19 links now gone as well as the wood corner post.

In November 1986, Marvin Seymour/RLS 1412 found a WCD brass capped iron pipe at this corner and an old 16" Oak BT N21°E 39.65', found OK and used for new ties below, and noted new BTs: an 8" Mh N54°W 15.93', found OK and used for new ties below; an 8" Or N57°E 22.73', found OK and used for new ties below; and a 14" Bw East 28.86', now a 15'+- tall dead pike with lower face blaze open. Reference: Wisconsin DNR corner recovery notes in Oneida County survey records.

This recovery completed May 27, 2003; there were no direct witnesses.

Plan view map of monument location with bearing and distance ties to a minimum of four(4) described witness or reference monuments of concrete, natural stone, iron, live bearing trees or equivalent material. If applicable, also show a minimum of two(2) bearing and distance ties to any other monument found and not accepted; including the bearing and distance from the accepted monument.



- WITNESS MONUMENT TIES:**
- ① Old 15" Or BT with 3 face blazes open N23°E 39.49'.
 - ② Old 15" Or BT with lower blaze shut and an old 40d spike in lower right face, N59°E 26.52'.
 - ③ New 17" Or BT N82°E 28.05'.
 - ④ New 7" Mr BT S29°W 39.30'.
 - ⑤ Old 9" Mr BT with upper & lower blazes shut and a 40d aluminum nail in lower left face, N49°W 16.19'.
- All ties to my usual PK/W in right face.

Unless otherwise indicated, all bearing tree ties are to a .25" dia. by 2.5" long PK nail with a 1.25" dia. steel washer driven into unblazed right face and a .25" dia. by 2.5" long PK nail with a 2" dia. steel washer stamped BT is also driven into unblazed face of bearing tree at DBH; the basis for measured bearings is by compass to nearest degree and all tie distances are measured horizontal by steel tape corrected to nearest 1/100th feet at standard temperature of 68° F.

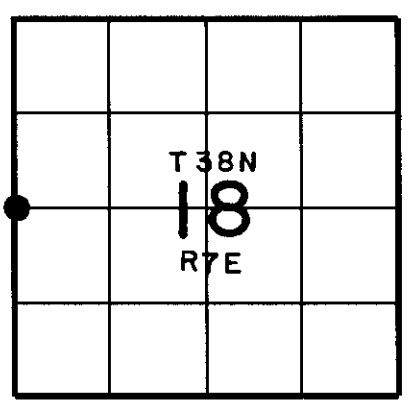
RLS SEAL:



LAND SURVEYOR CERTIFICATE:

I, William C. Rohde, hereby certify that I am duly licensed as a Professional Land Surveyor in the State of Wisconsin; that this USPLS monument location was determined by me and/or under my direct supervision and control; and that this U.S. Public Land Survey Monument Location Record is true and correct to the best of my knowledge and belief.

Signed: *William C. Rohde*
 William C. Rohde RLS 841



SECTION LOCATION MAP
 INDEX NO. L-25

3806132000