

U.S. PUBLIC LAND SURVEY MONUMENT RECORD

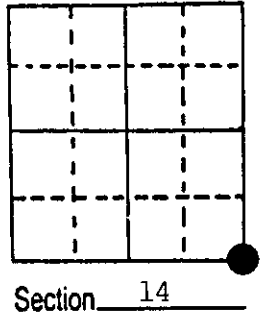
Note: This form is intended and designed to fulfill all requirements of Wisconsin Administrative Code, Chapter A-E 5.02, U.S. Public Land Survey Monument Record (3) (a) (b) (c) (d) (e) (f) (g) (h) (i). An additional sheet may be added if necessary to conform with said requirements.

(a) Corner location: Township 38 North

Range 6 East

Town Hazelhurst

County Oneida

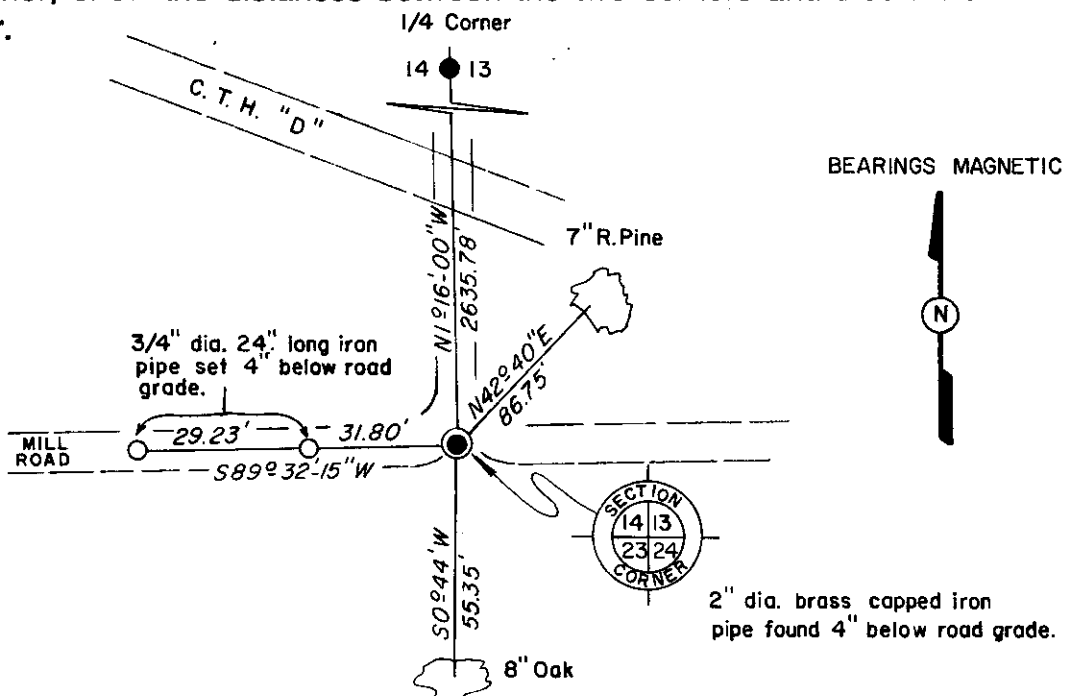


(b) (f) (g) (h) Description of monument found at this corner and if it was accepted, state all evidence (material, testimonial, occupational, plats, records, other monuments) used as a basis for accepting. If not accepted or if nothing was found, state evidence used as basis for establishing location. If reestablished through lost corner proportionate methods, indicate all monuments, distances and directions used to establish.

Sept. 1863 - Alexander Anderson, Deputy Surveyor, set post corner to sections 13, 14, 23 and 24. Original bearing trees: Fir 12" N66.5°E, 11 lks.; W. Pine 10" S39°W, 19 lks.

May 18, 1984 - Jerome N. Kraemer, Registered Land Surveyor, found 2 1/2" diameter brass cap 4" below ground level in centerline of old east-west road bed. Corner is on south edge of present traveled way. Brass cap is stamped T38N, R6E, 14, 13, 23, 24 11-1-78 S407. Found 4" cedar post bearing N44°W, 26'. Cedar post has metal location tag marked WC sec cor 26' SE. Set 2 reference iron pipes and blazed and scribed, set nail in 2 new bearing trees as shown in plan view below.

(c) (d) (e) Plan view of corner with ties to at least 4 witness monuments. If in disagreement with previously established corner, show the distances between the two corners and also indicate the ties to the disputed corner.



(i) I, Jerome N. Kraemer, Registered Land Surveyor No. S-1448 (type or print name) certify that the corner location on this record was determined by me or under my direction and control and that this U.S. Public Land Survey Monument Record is correct and complete to the best of my knowledge and belief.

Jerome N. Kraemer
Signature

June 12, 1984
Date



3806140000

Index No. N-21

U.S. PUBLIC LAND SURVEY MONUMENT RECORD

REGISTER OF DEEDS OFFICE
ONEIDA COUNTY
FILED

NOV 23 2016

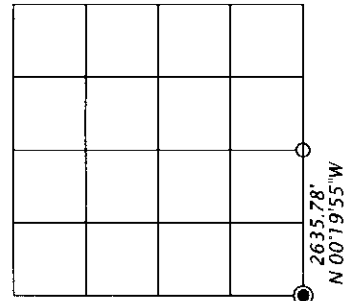
Note: This form is intended and designed to fulfill all requirements of the Wisconsin Administrative Code, Chapter A-E 7.08 U.S. Public Land Monument Record (3)(a)(b)(c)(d)(e)(f)(g)(h)(i). An additional sheet may be added if necessary to conform with said requirements.

(a) CORNER LOCATION: COORDINATES
Southeast corner of Section 14 North:
Township 38 North East:
Range 6 East Control Station:
Town of Hazelhurst Latitude:
County of Oneida Longitude:
Datum:
Method:

AT _____ O'CLOCK _____ M
KYLE J. FRANSON
REGISTER OF DEEDS

(RECORDING AREA)

SECTION 14



(b) HISTORY OF ORIGINAL CORNER ESTABLISHMENT

Original Surveyor:
Date of Survey: Commenced _____
Completed _____
Original B.T.'S _____

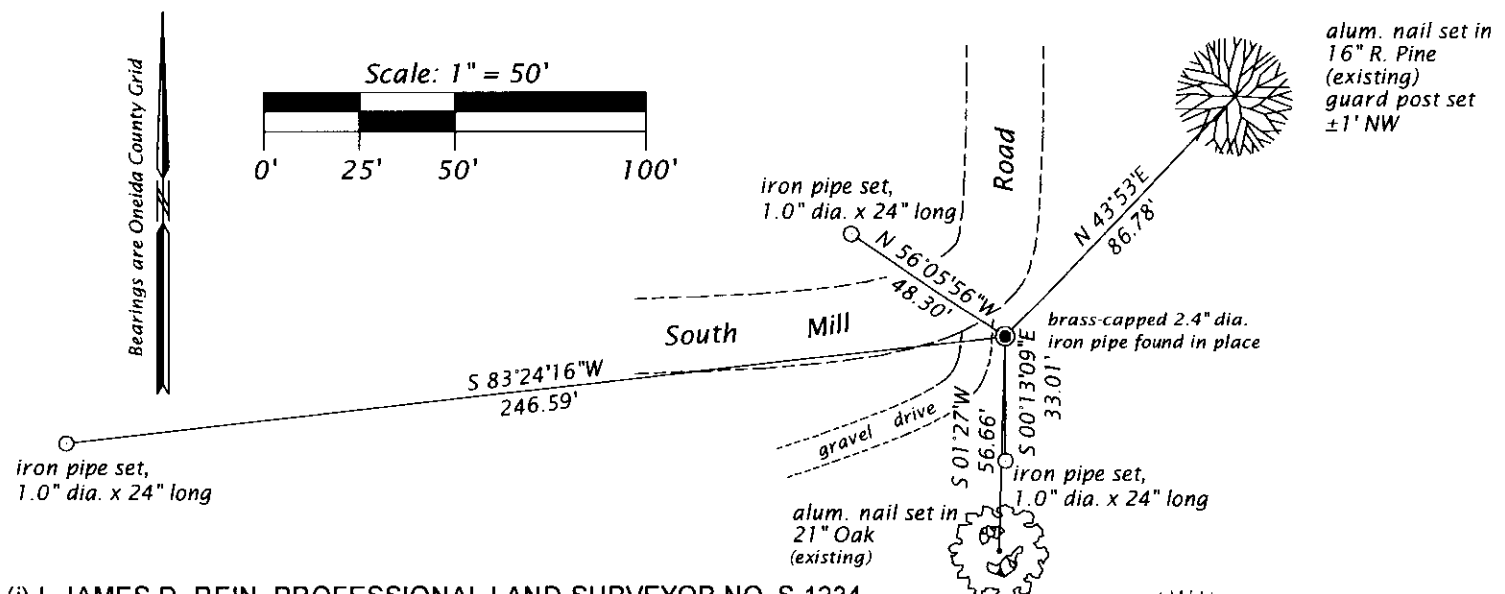
SEE PREVIOUS U.S.P.L.S. MONUMENT
RECORD DATED 6/12/1984 INDEX NO. N-21

(f)(g)(h) DESCRIPTION OF MONUMENT FOUND AT THIS CORNER AND IF IT WAS ACCEPTED, STATE ALL EVIDENCE (MATERIAL, TESTIMONIAL, OCCUPATIONAL, PLATS, RECORDS, OTHER MONUMENTS) USED AS A BASIS FOR ESTABLISHING LOCATION. IF NOT ACCEPTED OR IF NOTHING WAS FOUND, STATE EVIDENCE USED AS BASIS FOR ESTABLISHING LOCATION. IF REESTABLISHED THROUGH LOST CORNER PROPORTIONATE METHODS, INDICATE ALL MONUMENTS, DISTANCES AND DIRECTIONS USED TO ESTABLISH. INDICATE TYPE OF MONUMENT AND SIGN POST FOUND OR SET.

SEE PREVIOUS U.S.P.L.S. MONUMENT
RECORD DATED 6/12/1984 INDEX NO. N-21

June, 15, 2015 - James D. Rein, found the brass-capped 2.4" dia. iron pipe leaning south. Reset monument plumb, which now checks our previous traverse control. Made new reference ties as shown below.

(c)(d)(e) PLAN VIEW OF CORNER WITH TIES TO AT LEAST 4 WITNESS MONUMENTS. IF IN DISAGREEMENT WITH PREVIOUSLY ESTABLISHED CORNER, SHOW THE DISTANCE BETWEEN THE TWO CORNERS AND ALSO INDICATE THE TIES TO THE DISPUTED CORNER.

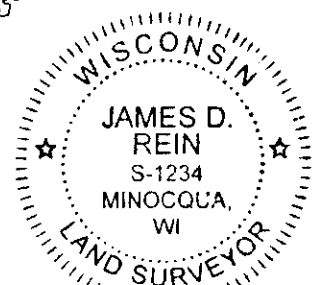


(i) I, JAMES D. REIN, PROFESSIONAL LAND SURVEYOR NO. S-1234 HEREBY CERTIFY THAT THE CORNER LOCATION ON THIS RECORD WAS DETERMINED BY ME OR UNDER MY DIRECTION AND CONTROL AND THAT THIS U.S. PUBLIC LAND SURVEY MONUMENT RECORD IS CORRECT AND COMPLETE TO THE BEST OF MY KNOWLEDGE AND BELIEF.

SIGNATURE

DATE

10-29-16



3806140000

INDEX NO. N-21