

# U.S. PUBLIC LAND SURVEY MONUMENT RECORD

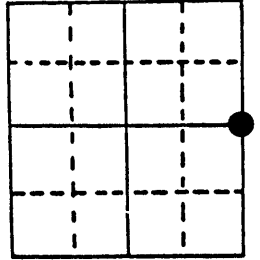
Note: This form is intended and designed to fulfill all requirements of Wisconsin Administrative Code, Chapter A-E 5.02, U.S. Public Land Survey Monument Record (3) (a) (b) (c) (d) (e) (f) (g) (h) (i). An additional sheet may be added if necessary to conform with said requirements.

(a) Corner location: Township 38 North

Range 6 East

Town Hazelhurst

County Oneida



Section 14

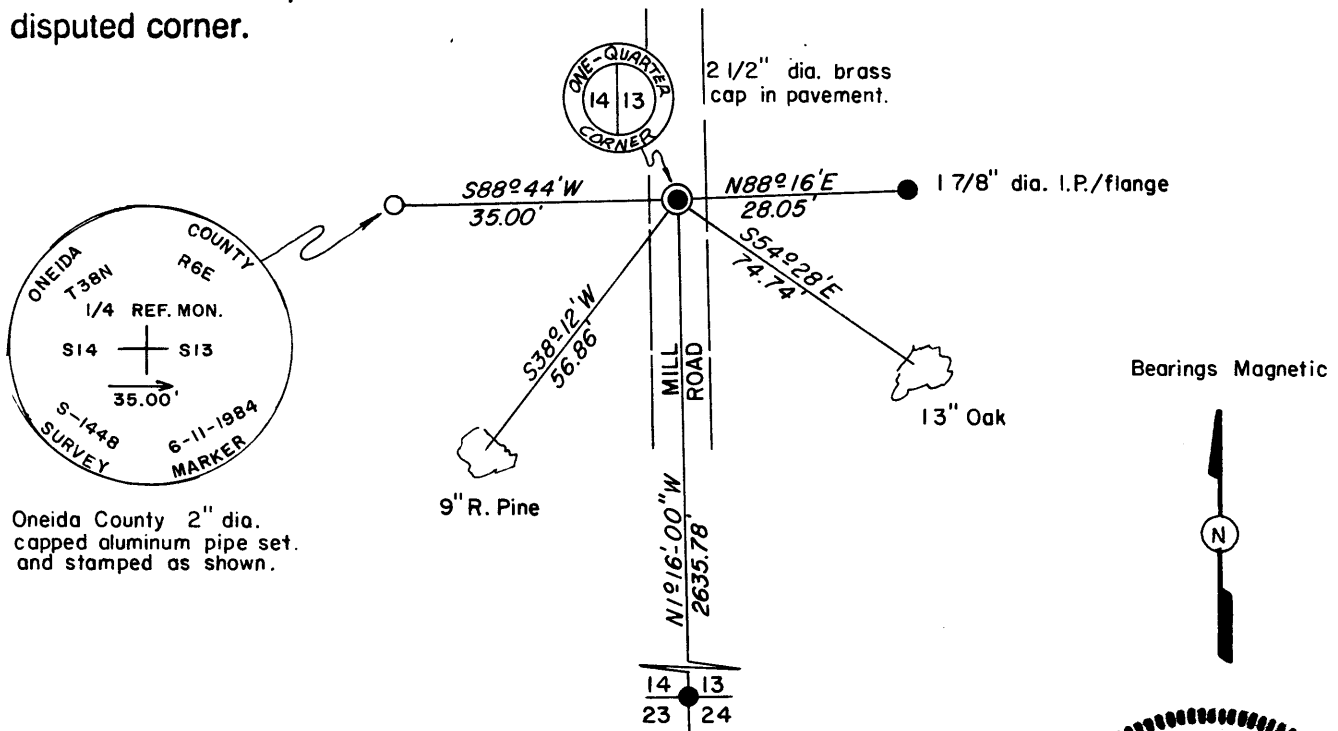
(b) (f) (g) (h) Description of monument found at this corner and if it was accepted, state all evidence (material, testimonial, occupational, plats, records, other monuments) used as a basis for accepting. If not accepted or if nothing was found, state evidence used as basis for establishing location. If reestablished through lost corner proportionate methods, indicate all monuments, distances and directions used to establish.

Sept. 1863 - Alexander Anderson, Deputy Surveyor, set quarter section post. Original bearing trees: W. Pine 7" N20°E, 14 lks.; W. Pine 16" S62.5°W, 38 lks.

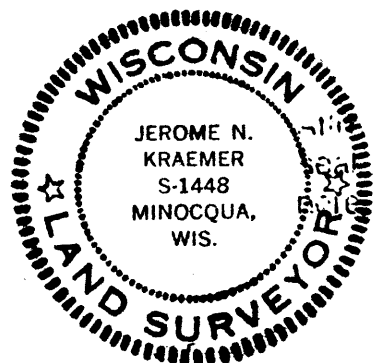
May 18, 1984 - Jerome N. Kraemer, Reg. Land Surveyor, found 2 1/2" dia. brass cap, unstamped, 1 1/2' west of centerline of Mill Road. A 2 1/2' by 4' patch in blacktop indicates someone may have excavated road in search of corner. Brass cap found falls within this area of road work. Found a 1 7/8" dia. iron pipe protruding up 12" above ground level with a 4" dia. flange on top bearing N88°-16'E, 28.05 feet. I stamped existing brass cap as follows: T38N, R6E, 1/4, S14, S13.

June 11, 1984 - Jerome N. Kraemer, Reg. Land Surveyor, set an Oneida County 2" dia. and 30" long aluminum pipe, protruding up 2" above ground level, with stamped cap to identify as a Reference Monument. Blazed, scribed and set nail in new bearing trees. See plan view below.

(c) (d) (e) Plan view of corner with ties to at least 4 witness monuments. If in disagreement with previously established corner, show the distances between the two corners and also indicate the ties to the disputed corner.



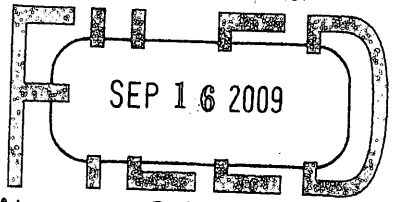
(i) I, Jerome N. Kraemer, Registered Land Surveyor No. S-1448  
 (type or print name) certify that the corner location on this record was determined by me or under my direction and control and that this U.S. Public Land Survey Monument Record is correct and complete to the best of my knowledge and belief.



Jerome N. Kraemer  
 Signature

Date

Index No. L-21



At \_\_\_\_\_ O'Clock \_\_\_\_\_ M  
**THOMAS H. LEIGHTON**  
REGISTER OF DEEDS

**U.S. PUBLIC LAND SURVEY MONUMENT RECORD**

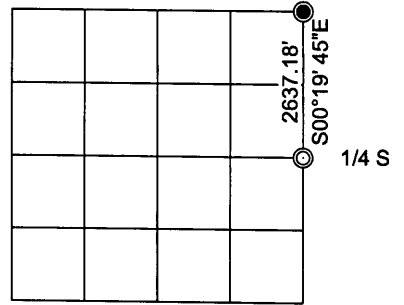
Note: This form is intended and designed to fulfill all requirements of the Wisconsin Administrative Code, Chapter A-E 7.08 U.S. Public Land Monument Record (3)(a)(b)(c)(d)(e)(f)(g)(h)(i). An additional sheet may be added if necessary to conform with said requirements.

(a) CORNER LOCATION:  
E 1/4 Corner of Section 14  
Township 38 North  
Range 6 East  
Town of Hazelhurst  
Oneida County

COORDINATES  
North: 217753.4440  
East: 191847.6110  
Control Station: N/A  
Latitude: N/A  
Longitude: N/A  
Datum: N/A  
Method: Previous County GPS

(RECORDING AREA)

**SECTION 14**



(b) HISTORY OF ORIGINAL CORNER ESTABLISHMENT

Original Surveyor: Alexander Anderson, Deputy Surveyor  
Date of Survey: Commenced: September 28th, 1863  
Completed: October 5th, 1863  
Original B.T.'S: White Pine 7" N 20°E, 14 links  
White Pine 16" S 62 1/2°W, 38 links

(f)(g)(h) DESCRIPTION OF MONUMENT FOUND AT THIS CORNER AND IF IT WAS ACCEPTED, STATE ALL EVIDENCE (MATERIAL, TESTIMONIAL, OCCUPATIONAL, PLATS, RECORDS, OTHER MONUMENTS) USED AS A BASIS FOR ESTABLISHING LOCATION. IF NOT ACCEPTED OF IF NOTHING WAS FOUND, STATE EVIDENCE USED AS BASIS FOR ESTABLISHING LOCATION. IF REESTABLISHED THROUGH LOST CORNER PROPORTIONATE METHODS, INDICATE ALL MONUMENTS, DISTANCES AND DIRECTIONS USED TO ESTABLISH. INDICATE TYPE OF MONUMENT AND SIGN POST FOUND OR SET.

May 18, 1984 - Jerome N. Kraemer, S-1448, found a 2.5" dia. brass cap, unstamped, 1.5' west of centerline of Mill Road. A 2.5' x 4' patch in blacktop indicating someone may have excavated road in search of corner. Brass cap found falls within this area of road work. He also finds a 1 7/8" dia. iron pipe protruding 12" above ground level with a 4" dia. flange on top bearing N 88°16'E, 28.05'. He stamps existing brass cap as follows: T38N, R6E, 1/4, S14, S13.

June 11, 1984 - Jerome N. Kraemer, S-1448, as shown on U.S.P.L.S. Monument Record on file with the Oneida County Land Information Office, sets an Oneida County 2" dia. and 30" long aluminum pipe, protruding up 2" above ground level, with stamped cap to identify as a Reference Monument which bears S 88°44'W, 35.00'. Blazed, scribed and set nail in the following bearing trees: Oak 13" S 54°28', 74.74'; Red Pine 9" S 38°12'W, 56.86'.

July 28, 2009 - I, James D. Rein, S-1234, upon a request from the Oneida County Land Information Office to perpetuate the corner location due to pending road construction, recover a 2.5" dia. iron pipe with no cap ± 2' west of the centerline and 5" below the paved surface of Mill Road and Kraemer's accessories, and set two new accessories as shown in plan.

August 4, 2009 - I, James D. Rein, S-1234, following completion of construction on this portion of Mill Road, set a Berntsen Survey nail recessed in the pavement to replace the iron pipe previously marking the corner which was removed by construction.

(c)(d)(e) PLAN VIEW OF CORNER WITH TIES TO AT LEAST 4 WITNESS MONUMENTS. IF IN DISAGREEMENT WITH PREVIOUSLY ESTABLISHED CORNER, SHOW THE DISTANCE BETWEEN THE TWO CORNERS AND ALSO INDICATE THE TIES TO THE DISPUTED CORNER.

Bearings Oneida County Grid, based on GPS survey data

Replaced a 2.0" diameter uncapped iron pipe with a Berntsen Survey nail following road construction. The nail is ± 2' west of the centerline of Mill Road, recessed in the pavement.

KRAEMER REFERENCE  
Oneida County 2" dia. capped aluminum pipe stamped as shown

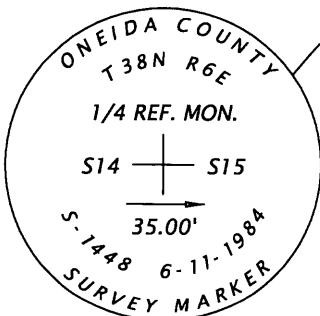
SET  
1" dia. x 24" long iron pipe with 2" dia. alum. cap

KRAEMER BT  
15" Red Pine w/ alum nail

KRAEMER BT  
20" Oak (double) w/ alum nail

SET  
1" dia. x 24" long iron pipe with 2" dia. alum. cap

FOUND  
1.9" dia. iron pipe with 4" dia. flange



Scale 1" = 30'

(i) I, JAMES D. REIN, PROFESSIONAL LAND SURVEYOR NO. S-1234 HEREBY CERTIFY THAT THE CORNER LOCATION ON THIS RECORD WAS DETERMINED BY ME OR UNDER MY DIRECTION AND CONTROL AND THAT THIS U.S. PUBLIC LAND SURVEY MONUMENT RECORD IS CORRECT AND COMPLETE TO THE BEST OF MY KNOWLEDGE AND BELIEF.

SIGNATURE

8/14/09  
DATE



3806142000

INDEX NO. L 21