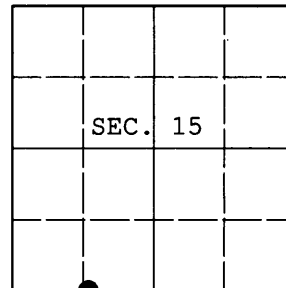


**U.S. PUBLIC LAND SURVEY MONUMENT RECORD**

Note: This form is intended and designed to fulfill all requirements of Wisconsin Administrative Code, Chapter A-E 7.08 U.S. Public Land Survey Monument Record (3) (a) (b) (c) (d) (e) (f) (g) (h) (i). An additional sheet may be added if necessary to conform with said requirements.

(a) CORNER LOCATION: WISCRS (Oneida County)  
 Meander Cor. of Secs. 15 & 22 N: 214,988.473 USft  
 Township 38 North E: 182,726.470 USft  
 Range 6 East of the 4th P.M. Datum: NAD 1983(2011)  
 Town of Hazelhurst County of Oneida



(b) HISTORY OF ORIGINAL CORNER ESTABLISHMENT

Original Surveyor: \_\_\_\_\_ Original Accessories: \_\_\_\_\_  
 Date of Survey: \_\_\_\_\_

(b) (f) (g) (h) Description of monument found at this corner and if it was accepted, state all evidence (material, testimonial, occupational, plats, records, other monuments) used as a basis for accepting. If not accepted or if nothing was found, state evidence used as basis for establishing location. If re-established through lost corner proportionate methods, indicate all monuments, distances and directions used to establish. Indicate type of monument and sign post found or set.

NOTE: This is a perpetuation of a previous USPLS Monument Record by Charles E. Winkler, RLS dated April 22, 2003 and filed in the office of the Oneida County Register of Deeds. A complete history of the corner can be found on the previous monument record. I accept the previous location as a true and faithful perpetuation or reestablishment of the original corner location and further perpetuate it as follows.

April 26, 2013: I found and accepted Winkler's monument, a 1-1/4" diam. iron rod projecting 6" above the ground surface. Winkler's accessories were found in substantial agreement with his previous record and were not remeasured as the sole purpose of this work is to report the coordinates of the corner point.

The coordinates shown were derived from offset static GPS observations referenced to a VRS control point generated by the WISCORS network.

(c) (d) (e) Plan view of corner with ties to at least 4 witness monuments. If in disagreement with previously established corner, show the distances between the two corners and also indicate the ties to the disputed.

REGISTER OF DEEDS OFFICE  
 ONEIDA COUNTY  
 FILED

MAY 14 2013

AT \_\_\_\_\_ O'CLOCK \_\_\_\_\_ M  
 KYLE J. FRANSON  
 REGISTER OF DEEDS

(i) I, Jeffrey W. Austin, Registered Land Surveyor No. S-1885, hereby certify that the corner location on this record was determined by me or under my direction and control and that this U.S. Public Land Survey Monument Record is correct and complete to the best of my knowledge and belief.



Signature \_\_\_\_\_

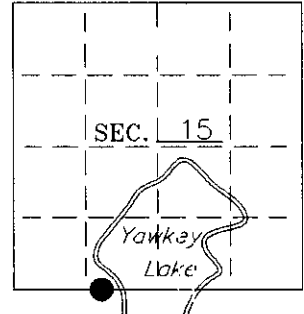
MAY 10, 2013  
 Date

3806150028 (INDEX NO. N-14,15)

**U. S. PUBLIC LAND SURVEY MONUMENT RECORD**

Note: This form is intended and designed to fulfill all requirements of Wisconsin Administrative Code-Chapter A-E 7.08 U. S. Public Land Survey Monument Record (3)(a)(b)(c)(d)(e)(f)(g)(h)(i). An additional sheet may be added if necessary to conform with said requirements.

(a) CORNER LOCATION: Oneida County Coordinates  
Meander corner of Sec. 15 N 214988.4928  
 Township 38 North E 182726.4933  
 Range 6 East Datum Base ---  
 Town Hazelhurst County of Oneida



(b) HISTORY OF ORIGINAL CORNER ESTABLISHMENT:  
 Original Surveyor: Alexander Anderson  
 Date of Survey: Commenced 1863  
 Completed 1863

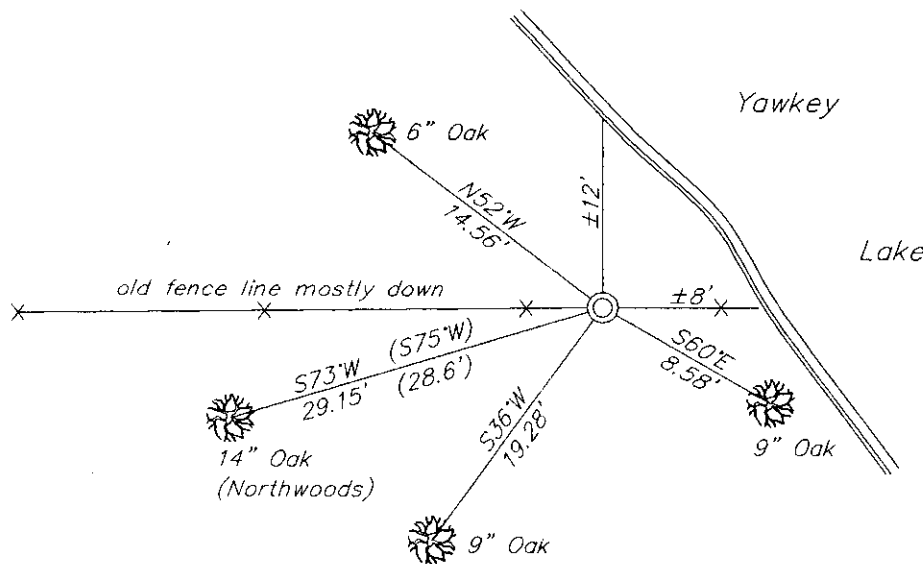
Original B.T.'S

W. Pine 20" N18°W, 20 lks  
 Y. Pine 15" S70°W, 23 lks

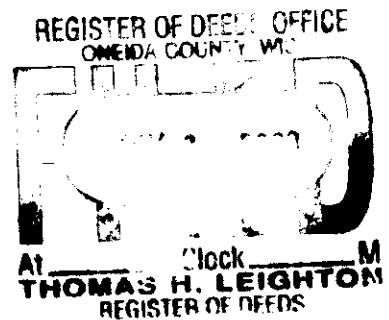
(b)(f)(g)(h) Description of monument found at this corner and if it was accepted—state all evidence (material—testimonial—occupation—plats—records—other monuments) used as a basis for accepting. If not accepted or if nothing was found state evidence used as basis for establishing location. If reestablished through lost corner proportionate methods indicate all monuments—distances and directions used to establish. Indicate type of monument and sign post found or set.

1973— Oneida County Map File No. L35 by W.H. Stuth shows an "iron pipe or cap by others" at this Meander Corner.  
 1974— The field notes from a survey by Northwoods Surveyors of Government Lot 3 and other lands in Section 22 show that they could not find the iron pipe or cap shown on Stuth's 1973 map. Northwoods recovered an old fence along the section line extending from the northwest corner of Section 22 easterly to Yawkey Lake, and set a 1-1/4" iron rod on this old fence at the west shore of the lake for the Meander Corner with two bearing trees: a 9" Oak bearing S75°W, 28.6', and a 6" W. Birch bearing S8°E, 20.2'.  
 2002— I found and accepted Northwoods' 1-1/4" iron rod and their Oak BT. I made three new BT's as shown below. Unable to set a county monument at this location as the iron rod found is in the root crown of tree.

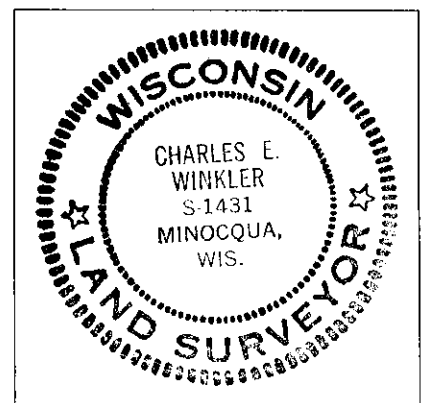
(c)(d)(e) Plan view of corner with ties to at least 4 witness monuments. If in disagreement with previously established corner—show the distances between the two corners and also indicate the ties to the disputed.



-60d nail set in each BT.



(i) I Charles E. Winkler S-1431  
 hereby certify that the corner location on this record was determined by me or under my direction and control and that this U.S. Public Land Survey Monument Record is correct and complete to the best of my knowledge and belief.



INDEX NO. N 14-15

Charles E. Winkler 4/22/03  
 Signature Date  
 Foltz and Associates, Inc.

3806150028