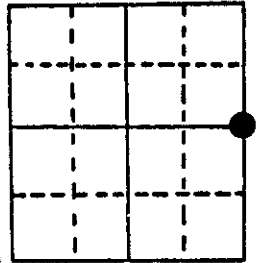
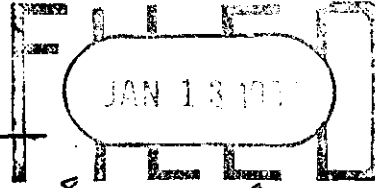


U.S. PUBLIC LAND SURVEY MONUMENT RECORD

Note: This form is intended and designed to fulfill all requirements of Wisconsin Administrative Code, Chapter A-E 5.02, U.S. Public Land Survey Monument Record (3) (a) (b) (c) (d) (e) (f) (g) (h) (i). An additional sheet may be added if necessary to conform with said requirements.

(a) Corner location: Township 38 North
 Range 6 East West
 Town/City/Village Hazelhurst
 County Oneida

REGISTER OF DEEDS OFFICE
ONEIDA COUNTY, WIS.



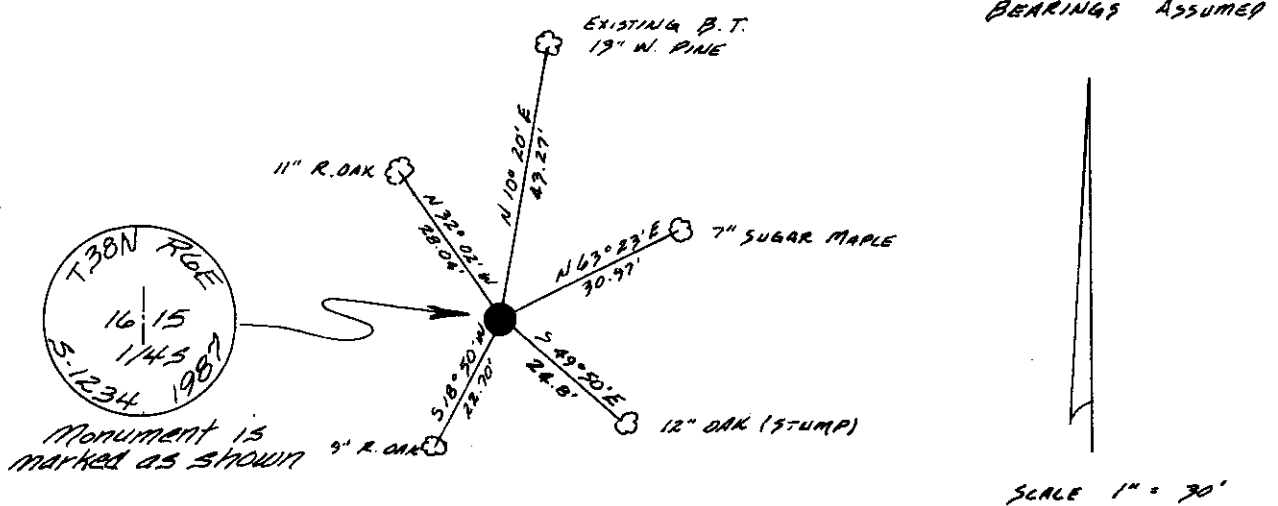
Section 16

(b) (f) (g) (h) Description of monument found at this corner and if it was accepted, state all evidence (material, testimonial, occupational, plats, records, other monuments) used as a basis for accepting. If not accepted or if nothing was found, state evidence used as basis for establishing location. If reestablished through lost corner proportionate methods, indicate all monuments, distances and directions used to establish.

September 1863 - Alexander Anderson, Deputy Surveyor - Set quarter section post. Original Bearing Trees: Sugar 8" N82°E, 8 links; Sugar 6" S87°W, 8 links.
 Oct. - Nov. 1953 - E. F. Kowalke, Surveyor - Identifies corner in Field Book 11, Page 46 monumented by a post and iron pipe. B.T.'s: Oak 10" S56°E, 25.4 feet and W. Pine 16" N6°E, 43 feet.
 August 25th, 1987 - James D. Rein, RLS - Replaced a 1 1/4" dia. double crimped iron pipe on old north-south fence with an Oneida County capped 2" dia. x 30" long flanged bottom aluminum monument. Existing B.T.'s: 12" Oak (stump) S49°-50'E, 24.8 feet; 13" W. Pine N19°E, 43.27 feet. Set plastic post 1.3 feet northeast of corner monument and made new bearing trees as shown in plan.

Note: Bearing tree ties made to aluminum nails set in center of root crown on side of tree facing corner.

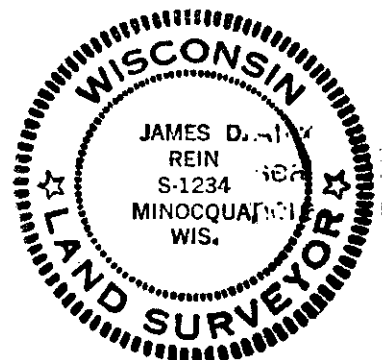
(c) (d) (e) Plan view of corner with ties to at least 4 witness monuments. If in disagreement with previously established corner, show the distances between the two corners and also indicate the ties to the disputed corner.



(i) I, James D. Rein, Registered Land Surveyor No. S-1234
 (type or print name) certify that the corner location on this record was determined by me or under my direction and control and that this U.S. Public Land Survey Monument Record is correct and complete to the best of my knowledge and belief.

James D. Rein
 Signature

August 26th, 1987
 Date



Index No. 1-13

3806162000

U.S. PUBLIC LAND SURVEY MONUMENT RECORD

REGISTER OF DEEDS OFFICE
ONEIDA COUNTY
FILED

Note: This form is intended and designed to fulfill all requirements of the Wisconsin Administrative Code, Chapter A-E 7.08 U.S. Public Land Monument Record (3)(a)(b)(c)(d)(e)(f)(g)(h)(i). An additional sheet may be added if necessary to conform with said requirements.

JAN 13 2021

KYLE J. FRANSON
REGISTER OF DEEDS

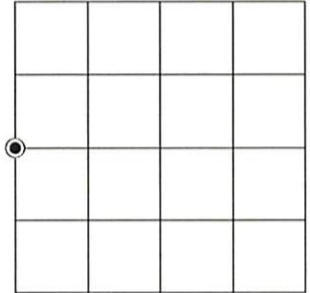
(a) CORNER LOCATION:

West Quarter Corner of Section 15
Township 38 North
Range 6 East
Town of Hazelhurst
County of Oneida

North:
East:
Datum:
GNSS Method:
GNSS Control:

(RECORDING AREA)

SECTION 15



(b) HISTORY OF ORIGINAL CORNER ESTABLISHMENT

Original Surveyor:
Date of Survey: Commenced
Completed
Original B.T.'S

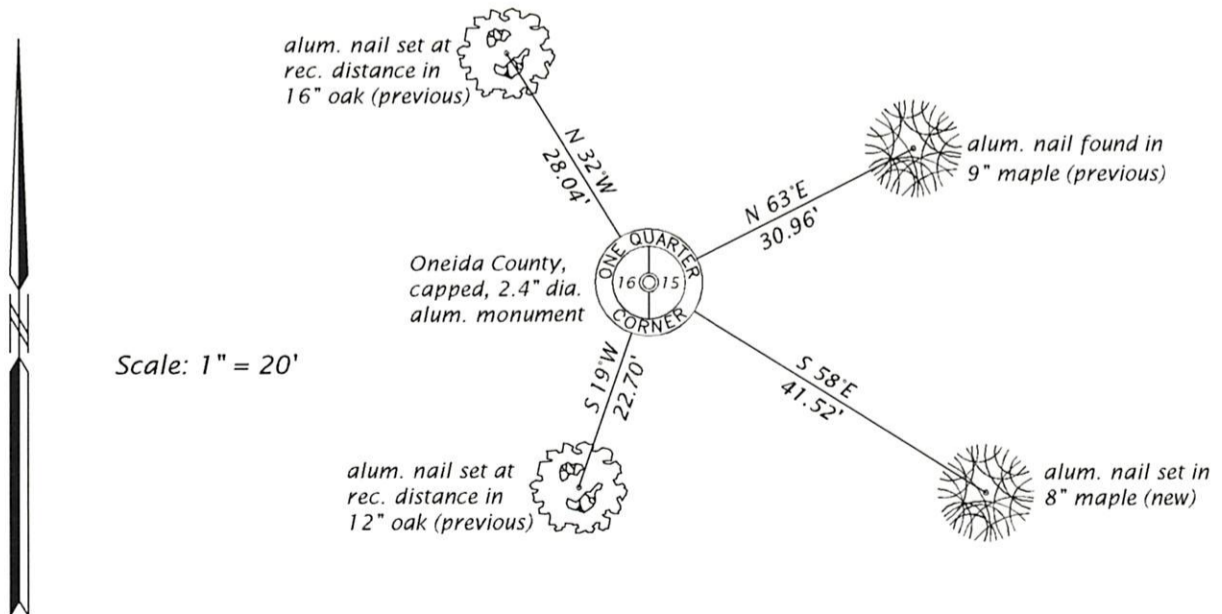
SEE PREVIOUS U.S.P.L.S. MONUMENT
RECORD DATED AUGUST 26, 1987.

(f)(g)(h) DESCRIPTION OF MONUMENT FOUND AT THIS CORNER AND IF IT WAS ACCEPTED, STATE ALL EVIDENCE (MATERIAL, TESTIMONIAL, OCCUPATIONAL, PLATS, RECORD, OTHER MONUMENTS) USED AS A BASIS FOR ESTABLISHING LOCATION. IF NOT ACCEPTED OR IF NOTHING WAS FOUND, STATE EVIDENCE USED AS BASIS FOR ESTABLISHING LOCATION. IF REESTABLISHED THROUGH LOST CORNER PROPORTIONATE METHODS, INDICATE ALL MONUMENTS, DISTANCES AND DIRECTIONS USED TO ESTABLISH. INDICATE TYPE OF MONUMENT AND SIGN POST FOUND OR SET.

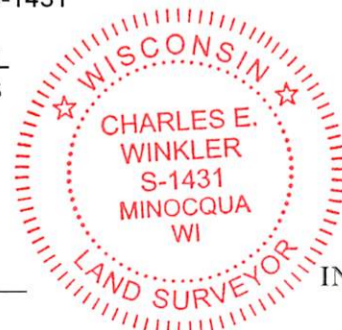
This is a perpetuation of a previous U.S.P.L.S. Monument Record by James D. Rein, RLS, dated August 26, 1987, and filed in the office of the Oneida County Register of Deeds. A complete history of the corner can be found on the previous monument record. I accept the previous location as a true and faithful perpetuation or reestablishment of the original corner location and further perpetuate it as follows.

November 2, 2020, Charles E. Winkler, P.L.S. No. S-1431, we found, and I accepted the Oneida County, capped, aluminum monument set by Rein in 1987. The northeasterly pine bearing tree and southeasterly oak stump are now gone. See below for updated witnesses.

(c)(d)(e) PLAN VIEW OF CORNER WITH TIES TO AT LEAST 4 WITNESS MONUMENTS. IF IN DISAGREEMENT WITH PREVIOUSLY ESTABLISHED CORNER, SHOW THE DISTANCE BETWEEN THE TWO CORNERS AND ALSO INDICATE THE TIES TO THE DISPUTED CORNER.



(i) I, CHARLES E. WINKLER, PROFESSIONAL LAND SURVEYOR NO. S-1431 HEREBY CERTIFY THAT THE CORNER LOCATION ON THIS RECORD WAS DETERMINED BY ME OR UNDER MY DIRECTION AND CONTROL AND THAT THIS U.S. PUBLIC LAND SURVEY MONUMENT RECORD IS CORRECT AND COMPLETE TO THE BEST OF MY KNOWLEDGE AND BELIEF.



Charles E. Winkler 12/30/2020
SIGNATURE DATE

INDEX NO. L-13
3906162000