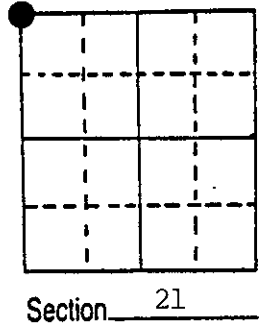


U.S. PUBLIC LAND SURVEY MONUMENT RECORD

Note: This form is intended and designed to fulfill all requirements of Wisconsin Administrative Code, Chapter A-E 5.02, U.S. Public Land Survey Monument Record (3) (a) (b) (c) (d) (e) (f) (g) (h) (i). An additional sheet may be added if necessary to conform with said requirements.

(a) Corner location: Township 38 North
 Range 6 East/West
 Town/City/Village Hazelhurst
 County Oneida



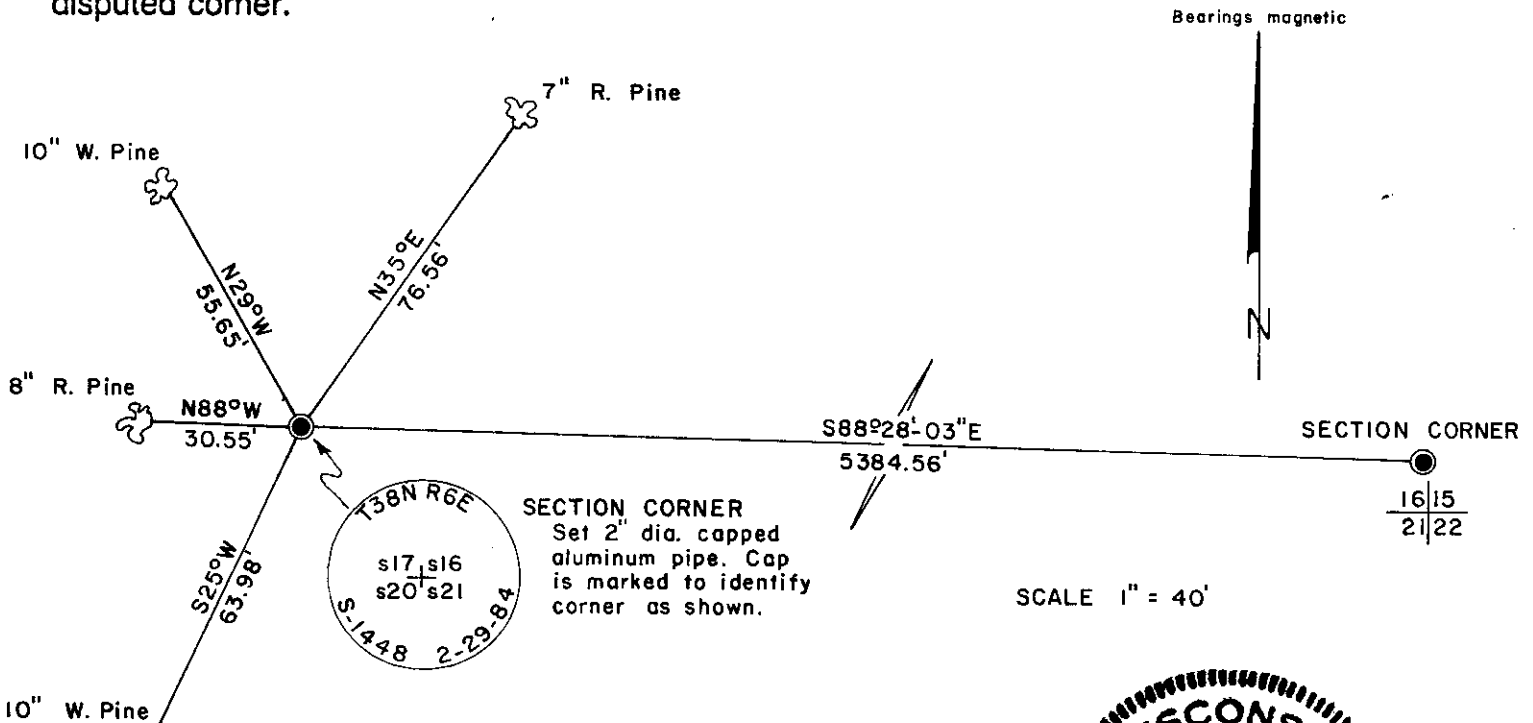
(b) (f) (g) (h) Description of monument found at this corner and if it was accepted, state all evidence (material, testimonial, occupational, plats, records, other monuments) used as a basis for accepting. If not accepted or if nothing was found, state evidence used as basis for establishing location. If reestablished through lost corner proportionate methods, indicate all monuments, distances and directions used to establish.

Sept. 1863 - Alexander Anderson, Gov't. Deputy Surveyor - set post corner to Sections 16, 17, 20 and 21. Original bearing trees: Hemlock 10" N17°W, 11 lks.; Sugar 8" N60°E, 14 lks.

Feb. 29, 1984 - Jerome N. Kraemer, R.L.S., found 8" long iron spike and old scribed pine post. Found bearing trees:
 25" Pine stump N49°W, 14.7 feet 10" J. Pine (dead) S51°E, 11.7 feet (F.R.W. 1949)
 18" Pine stump S49°W, 40.5 feet 9" J. Pine (dead) N48°E, 15.9 feet (F.R.W. 1949)

I set a 2" dia. and 30" long aluminum pipe with a cast aluminum cap stamped to identify corner to replace found spike. Corner protrude up 2" above ground level. Blazed, scribed and set aluminum nail in new bearing trees as shown in plan view below. Measurements are made to aluminum nail set in side of bearing tree.

(c) (d) (e) Plan view of corner with ties to at least 4 witness monuments. If in disagreement with previously established corner, show the distances between the two corners and also indicate the ties to the disputed corner.



(i) I, Jerome N. Kraemer, Registered Land Surveyor, No. S-1448
 (type or print name) certify that the corner location on this record was determined by me or under my direction and control and that this U.S. Public Land Survey Monument Record is correct and complete to the best of my knowledge and belief.



Jerome N. Kraemer February 29, 1984
 Signature Date

Index No. N-9

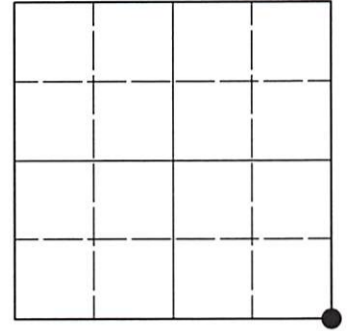
3806170000

U.S. PUBLIC LAND SURVEY MONUMENT RECORD

Note: This form is intended and designed to fulfill all requirements of Wisconsin Administrative Code, Chapter A-E 7.08 U.S. Public Land Survey Monument Record (3)(a-i).

(a) CORNER LOCATION
 Cor. of Secs. 16, 17, 20 & 21
 Township 38 North
 Range 6 East of the 4th P.M.
 Town of Hazelhurst
 County of Oneida

WISCRS - Oneida County
 N: 215,040.28 USft
 E: 175,909.63 USft
 Datum: NAD 83(2011) ep. 2010.00
 GNSS Method: RTN - Direct
 GNSS Control: WISCORS VRS



Sec. 17, T. 38 N., R. 6 E.

(b)(f)(g)(h) Description of monument found at this corner and if it was accepted, state all evidence (material, testimonial, occupational, plats, records, other monuments) used as a basis for accepting. If not accepted or if nothing was found, state evidence used as basis for establishing location. If re-established through lost corner proportionate methods, indicate all monuments, distances and directions used to establish. Indicate type of monument and sign post found or set.

This record is a perpetuation of the following land corner document(s):

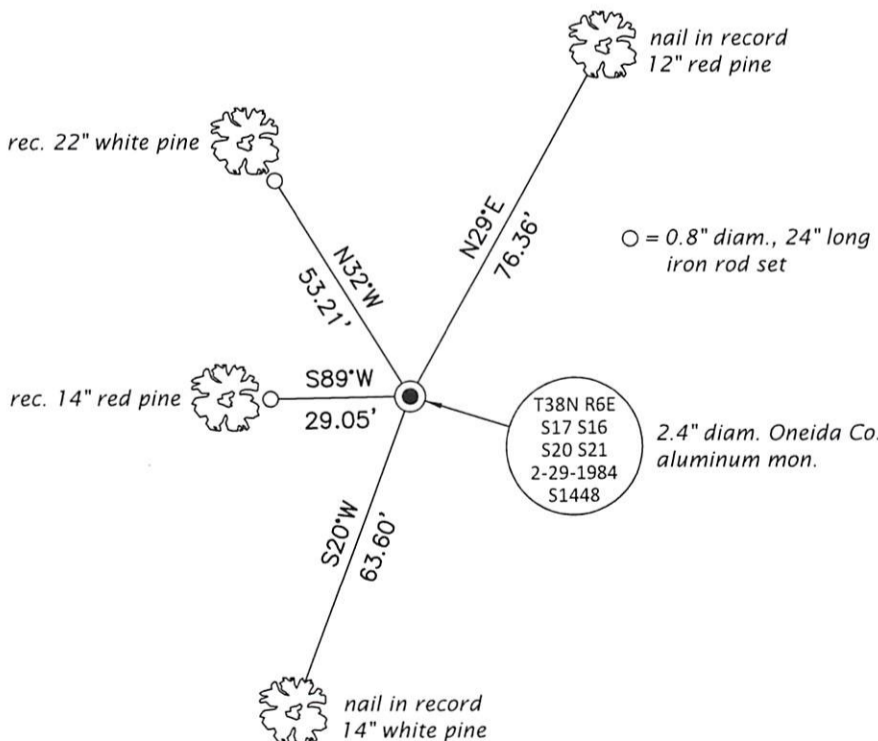
February 29, 1984: USPLS Monument Record by Jerome N. Kraemer, filed in Oneida County

A complete history of the corner can be found on the previous land corner document(s). I accept the record activity as a true and faithful perpetuation or reestablishment of the original corner location and further perpetuate it as described below.

June 17, 2022: I found and accepted the record monument, a 2.4" diam. aluminum pipe, firmly set, with a 3.3" diam. Oneida Co. aluminum cap projecting 4" above the ground surface. I found or established accessories as indicated below. I found a white vinyl sign post bearing Northwest, 0.9 ft.

The coordinate value shown is the weighted mean of two or more GNSS observations at markedly different times satisfying the accuracy requirements defined and qualified in the 2022 Oneida County Fee Schedule for USPLS Corners.

(c)(d)(e) Plan view of corner with ties to at least 4 witness monuments. If in disagreement with previously established corner, show the distances between the two corners and also indicate the ties to the disputed.




REGISTER OF DEEDS OFFICE
 ONEIDA COUNTY
 FILED

AUG 02 2022

KYLE J. FRANSON
 REGISTER OF DEEDS

(i) I, Jeffrey W. Austin, Professional Land Surveyor No. S-1885, hereby certify that the corner location on this record was determined by me or under my direction and control and that this U.S. Public Land Survey Monument Record is correct and complete to the best of my knowledge and belief.

 Signature
 JULY 21, 2022 Date