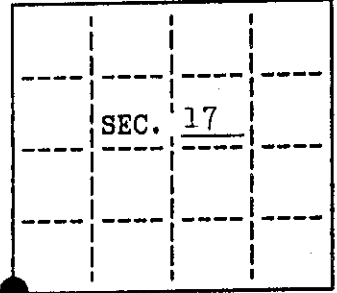


**U. S. PUBLIC LAND SURVEY MONUMENT RECORD**

Note: This form is intended and designed to fulfill all requirements of Wisconsin Administrative Code, Chapter A-E 7.08 U.S. Public Land Survey Monument Record (3)(a)(b)(c)(d)(e)(f)(g)(h)(i). An additional sheet may be added if necessary to conform with said requirements.

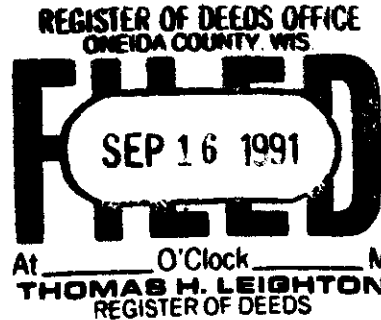
(a) CORNER LOCATION: State Plane Coordinates  
 SW corner of Sec. 17 X \_\_\_\_\_  
 Township 38 North Y \_\_\_\_\_  
 Range 6 East Datum Base \_\_\_\_\_  
 Town/City Hazelhurst County of Oneida



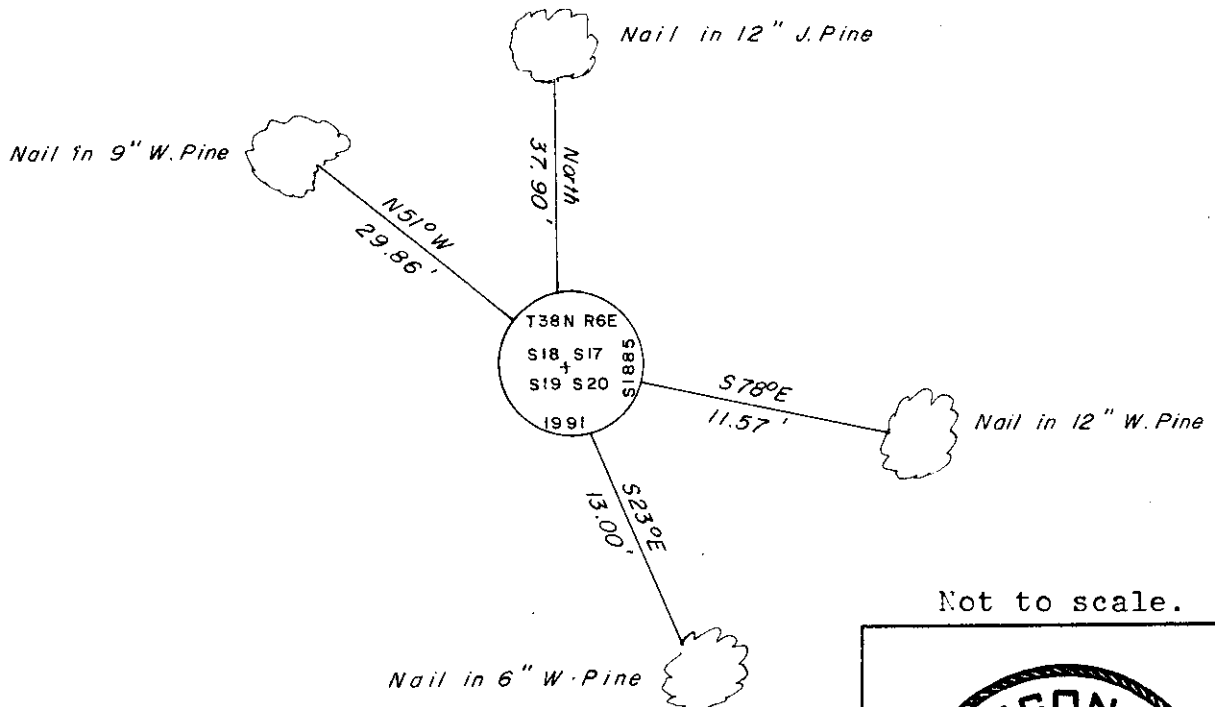
(b) HISTORY OF ORIGINAL CORNER ESTABLISHMENT  
 Original Surveyor: Alexander Anderson Original B.T.'s  
 Date of Survey: Commenced Sept. 1863 Aspen 8 N60°E, 21  
 Completed Oct. 1863 W.Pine 8 N17°W, 36

(b)(f)(g)(h) Description of monument found at this corner and if it was accepted, state all evidence (material, testimonial, occupational, plats, records, other monuments) used as a basis for accepting. If not accepted or if nothing was found, state evidence used as basis for establishing location. If reestablished through lost corner proportionate methods, indicate all monuments, distances and directions used to establish. Indicate type of monument and sign post found or set.

See reverse....



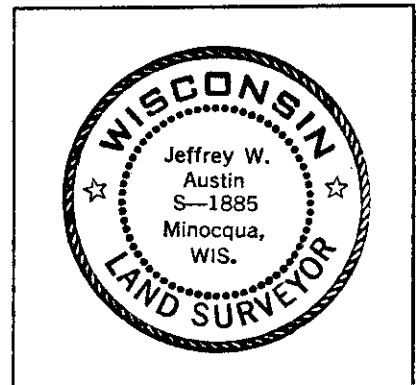
(c)(d)(e) Plan view of corner with ties to at least 4 witness monuments. If in disagreement with previously established corner, show the distances between the two corners and also indicate the ties to the disputed.



Not to scale.

(i) I, Jeffrey W. Austin, Registered Land Surveyor hereby certify that the corner location on this record was determined by me or under my direction and control and that this U.S. Public Land Survey Monument Record is correct and complete to the best of my knowledge and belief.

Signature [Handwritten Signature] Date 9-12-1991



INDEX NO. N-S

3806180000

May, 1949: Notes by Wincentzen, iron pipe, Pine 12 N35°W, 99.9' (old); J.Pine 8 N6°30'W, 37.6'; J.Pine 6 N56°W, 30.8'.

July, 1968: Section subdivision by John Fisher, iron pipe, 10" J.Pine N0°6'W, 37.4'; 8" W.Pine N60°W, 29.9'.

September 7, 1991<sup>st</sup>: I found and accepted a 2" dia. 48" long iron pipe with a 2-1/2" dia. unmarked damaged cap. I replaced this monument with a 2-1/2" dia. 30" long aluminum pipe with a 3-1/4" dia. Oneida Co. aluminum cap set 5" above the ground and marked as shown on the reverse side of this record. I also set a DEEP-1 magnet below the new monument. I found the following witnesses: (Wincentzen) set nail in J.Pine 12" North, 37.90 feet; set nail in W.Pine 9" N51°W, 29.86 feet. I established the following witnesses: set nail in W.Pine 12" S78°E, 11.57 feet; set nail in W.Pine 6" S23°E, 13.00 feet; set plastic sign post Northwest, 1-1/2 feet.

# U.S. PUBLIC LAND SURVEY MONUMENT RECORD

REGISTER OF DEEDS OFFICE  
ONEIDA COUNTY  
FILED

MAY 29 2018

Note: This form is intended and designed to fulfill all requirements of the Wisconsin Administrative Code, Chapter A-E 7.08 U.S. Public Land Monument Record (3)(a)(b)(c)(d)(e)(f)(g)(h)(i). An additional sheet may be added if necessary to conform with said requirements.

KYLE J. FRANSON  
REGISTER OF DEEDS

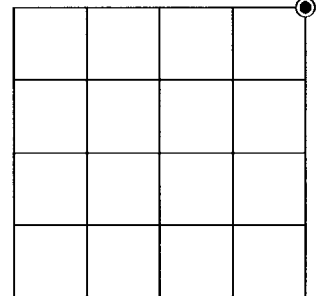
**(a) CORNER LOCATION:**

Northeast Corner of Section 19  
Township 38 North  
Range 6 East  
Town of Hazelhurst  
County of Oneida

North:  
East:  
Datum:  
GNSS Method:  
GNSS Control:

(RECORDING AREA)

SECTION 19



**(b) HISTORY OF ORIGINAL CORNER ESTABLISHMENT**

Original Surveyor:  
Date of Survey: Commenced  
Completed  
Original B.T.'S

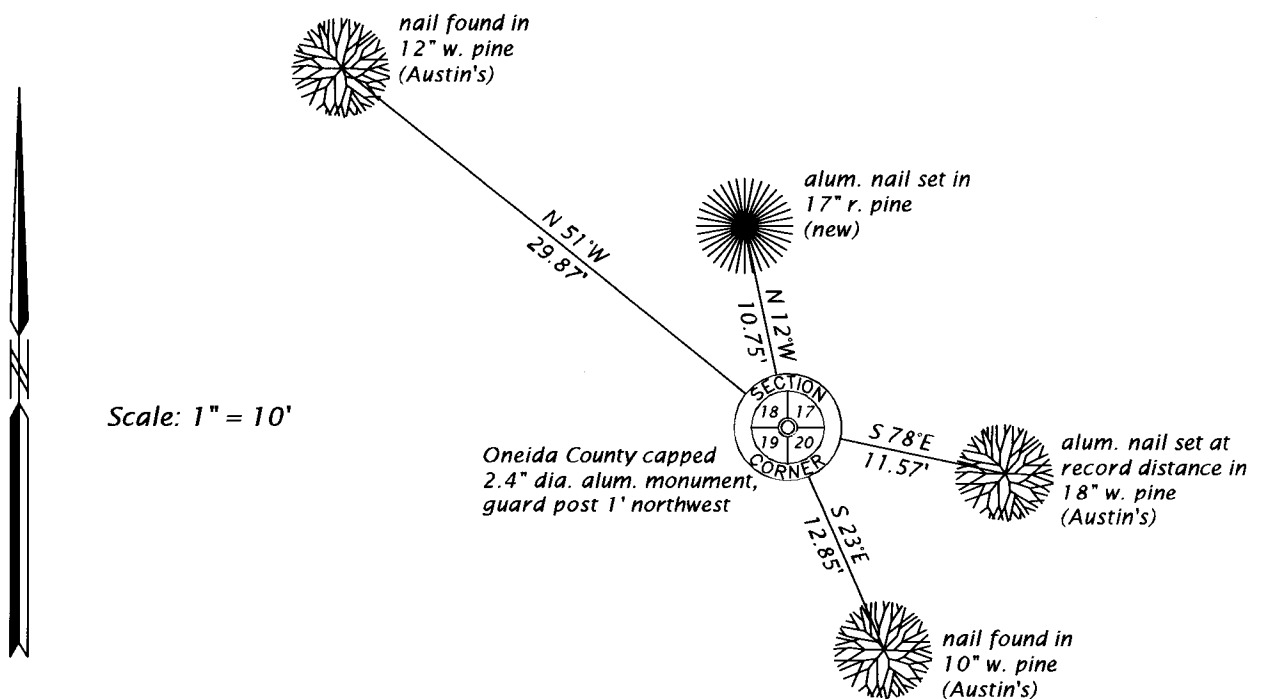
*SEE PREVIOUS U.S.P.L.S. MONUMENT  
RECORD DATED SEPTEMBER 12, 1991.*

(f)(g)(h) DESCRIPTION OF MONUMENT FOUND AT THIS CORNER AND IF IT WAS ACCEPTED, STATE ALL EVIDENCE (MATERIAL, TESTIMONIAL, OCCUPATIONAL, PLATS, RECORD, OTHER MONUMENTS) USED AS A BASIS FOR ESTABLISHING LOCATION. IF NOT ACCEPTED OR IF NOTHING WAS FOUND, STATE EVIDENCE USED AS BASIS FOR ESTABLISHING LOCATION. IF REESTABLISHED THROUGH LOST CORNER PROPORTIONATE METHODS, INDICATE ALL MONUMENTS, DISTANCES AND DIRECTIONS USED TO ESTABLISH. INDICATE TYPE OF MONUMENT AND SIGN POST FOUND OR SET.

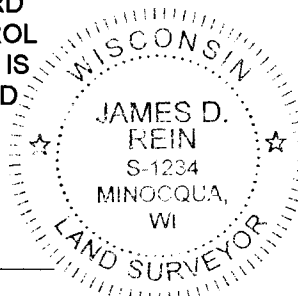
This is a perpetuation of a previous U.S.P.L.S. Monument Record by Jeffrey W. Austin, RLS, dated September 12, 1991, and filed in the office of the Oneida County Register of Deeds. A complete history of the corner can be found on the previous monument record. I accept the previous location as a true and faithful perpetuation or reestablishment of the original corner location and further perpetuate it as follows.

May 8, 2018, I, James D. Rein, P.L.S. No. S-1234, found and accepted the Oneida County capped aluminum monument set by Austin in 1991. His northerly jack pine bearing tree is now gone - see below for updated witnesses.

(c)(d)(e) PLAN VIEW OF CORNER WITH TIES TO AT LEAST 4 WITNESS MONUMENTS. IF IN DISAGREEMENT WITH PREVIOUSLY ESTABLISHED CORNER, SHOW THE DISTANCE BETWEEN THE TWO CORNERS AND ALSO INDICATE THE TIES TO THE DISPUTED CORNER.



(i) I, JAMES D. REIN, PROFESSIONAL LAND SURVEYOR NO. S-1234 HEREBY CERTIFY THAT THE CORNER LOCATION ON THIS RECORD WAS DETERMINED BY ME OR UNDER MY DIRECTION AND CONTROL AND THAT THIS U.S. PUBLIC LAND SURVEY MONUMENT RECORD IS CORRECT AND COMPLETE TO THE BEST OF MY KNOWLEDGE AND BELIEF.



*James D. Rein*  
SIGNATURE

5-18-18  
DATE

INDEX NO. N - 5  
3806180000