

CERTIFIED LAND CORNER RESTORATION

State of Wisconsin }
County of Oneida } ss.

I, Jerome N. Kraemer, do hereby certify that on the 5th day of November, 1980, I found evidence of the one-quarter corner common to 18 and 19 Township 38 North, Range 6 East, Fourth Principal Meridian, as described hereon; and that from this evidence I established a new monument and accessories as described hereon to perpetuate the original location of this corner:

Description of original monument and accessories and subsequent restorations:

Wood post set by Alexander Anderson, Deputy Surveyor, 1863, and was witnessed by a 24" Yellow Pine, N81°E, 19 links and by a 8" Yellow Pine, S5°W, 48 links.

Description of corner evidence found:

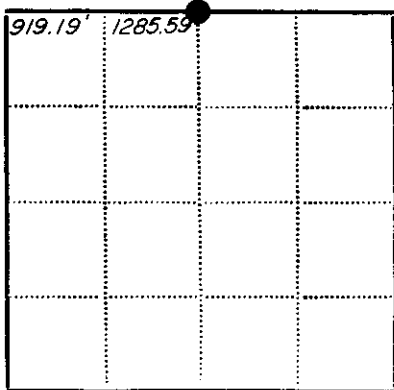
I found a 1" diameter round iron pipe flush, 13 feet east of the centerline of Interlocken Road witnessed by an old 15" Jack Pine, N89°E, 12.2 feet. An old downed barbed wire fence runs east from corner. Also an old downed barbed wire fence runs west from the west side of Interlocken Road.

Description of monument and accessories I established to perpetuate the location of this corner:

I witnessed the existing iron pipe with the following scribed bearing trees with P.K. nails set in lower blaze.
15" Norway Pine N20°E, 81.75 feet;
14" Norway Pine N60°E, 62.45 feet;
8" Jack Pine S54°E, 35.20 feet;

I set a squared, scribed Jack Pine post to witness iron pipe.

Section 19, T38N, R6E



● - Corner monument restored
□ -

Resident witnesses..... None

Dated at Minocqua Wisconsin, this 11th day of March 1981.

Signature Jerome N. Kraemer Title Registered Land Surveyor
(County Surveyor, Registered Land Surveyor, or other duly authorized official)

Surveyors Registration No. S - 1448

Office of Reg. of Deeds County of Oneida
I hereby certify that the within instrument was filed in this office for record on the 11 day of June 1986, and was filed in Book No. Page No. of County Records.

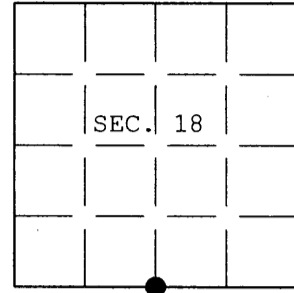
Signature James Verage Kuehn Title Register of Deeds
Cynthia A. Pitts, Deputy

Township, Range, Section, Index No., Page No.

**U.S. PUBLIC LAND SURVEY MONUMENT RECORD**

Note: This form is intended and designed to fulfill all requirements of Wisconsin Administrative Code, Chapter A-E 7.08 U.S. Public Land Survey Monument Record (3) (a) (b) (c) (d) (e) (f) (g) (h) (i). An additional sheet may be added if necessary to conform with said requirements.

(a) CORNER LOCATION: Plane Coordinates  
 1/4 Cor. of Secs. 18 & 19 X:  
 Township 38 North Y:  
 Range 6 East of the 4th P.M. Datum:  
 Town of Hazelhurst County of Oneida



(b) HISTORY OF ORIGINAL CORNER ESTABLISHMENT

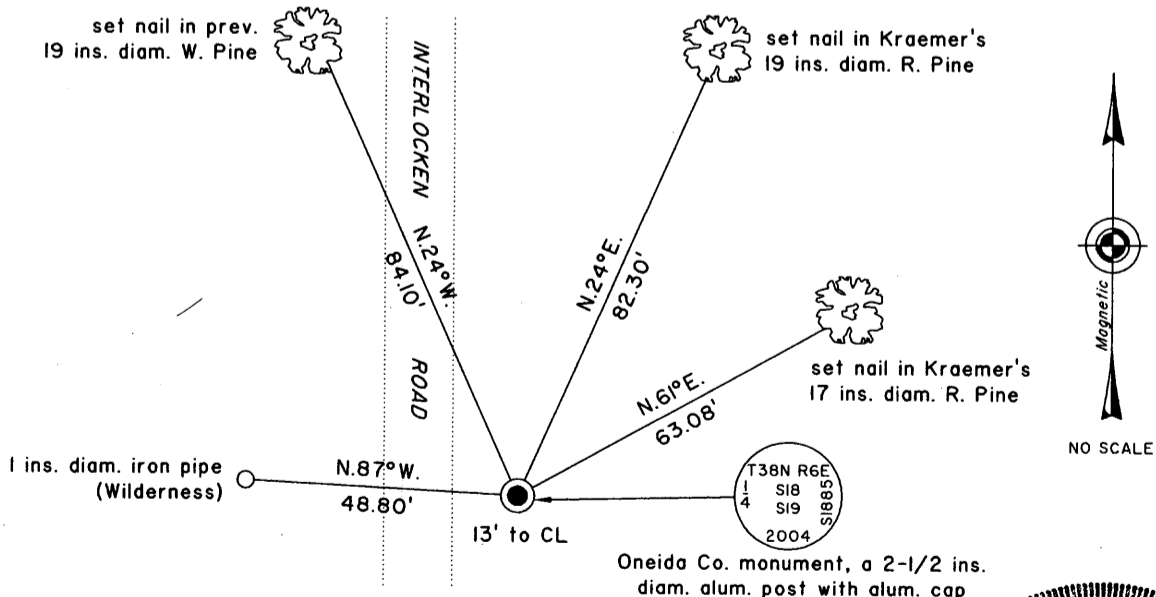
Original Surveyor: Anderson, Alexander Original Accessories:  
 Date of Survey: Commenced Sept. 1863 Y. Pine 24" N.81-1/2°E., 19 lks.  
 Completed Oct. 1863 Y. Pine 8" S.5°W., 48 lks.

(b) (f) (g) (h) Description of monument found at this corner and if it was accepted, state all evidence (material, testimonial, occupational, plats, records, other monuments) used as a basis for accepting. If not accepted or if nothing was found, state evidence used as basis for establishing location. If re-established through lost corner proportionate methods, indicate all monuments, distances and directions used to establish. Indicate type of monument and sign post found or set.

11 Mar. 1981: USPLS Monument Record prepared by Jerome N. Kraemer and filed in the office of the Oneida County Register of Deeds. Found 1 in. diam. iron pipe based on previously perpetuated location.

20 July 2004: I found and accepted Kraemer's monument, a 42 ins. long, 1-1/4 ins. diam. iron pipe on the East backslope of Interlocken Road. I replaced the pipe with an aluminum post, 30 ins. long, 2-1/2 ins. diam., buried 8 ins. below the ground surface with an Oneida County aluminum cap marked as shown below. I found both of Kraemer's Jack Pine standing dead. I found and established accessories as shown below and set a white plastic sign post bearing East, 1 ft. dist.

(c) (d) (e) Plan view of corner with ties to at least 4 witness monuments. If in disagreement with previously established corner, show the distances between the two corners and also indicate the ties to the disputed.



(i) I, Jeffrey W. Austin, Registered Land Surveyor No. S-1885, hereby certify upon honor that the corner location on this record was determined by me or under my direction and control and that this U.S. Public Land Survey Monument Record is correct and complete to the best of my knowledge and belief.

Signature

Date

11 FEB 2005



3806180020

INDEX NO. N-3